

**Mayor Marotti declares
social security month**
- see page 3

**Lori Ann Diamond receives
county employee award**
- see page 5

**Claudia Hartmann meets
Kean at governor's school**
- see -age 9

Belleville Times

76th Year No. 36

Serving Belleville Since 1909

Thursday, August 15, 1985

35¢

Board of education sets pay rates

The Belleville Board of Education approved pay rates for school board employees for the 1985-86 school year. Pay rates are as follows:

- Substitute teachers (daily basis), \$40 per day;
- Substitute teachers (permanent basis), \$50 per day;
- Substitute teachers (long-term basis), \$60 per day;
- Home Instruction teachers, \$10 per hour;
- Secretarial substitutes, \$4.75 per hour;
- Teacher/lunchroom aides, bus aides, \$4.75 per hour; and
- Part-time bus drivers, \$7.38 per hour.

Matters in Brief

Gov. Kean vetoes budget resolution

Gov. Thomas Kean vetoed a \$300,000 budget resolution for a new police facility in Belleville last week.

The \$300,000, introduced by the Joint Appropriations Committee, would have been spent on a police communications system as well as office equipment and other items needed "to make a house a home." Commissioner of Public Safety Ralph DiRuggiero said.

The monies would have been added to the \$10-million cost of a new municipal complex, scheduled for construction next spring.

Board of education hires personnel

The Belleville Board of Education approved a resolution at its meeting last Monday night appointing eight additional staff members for the 1985-86 school year.

They are: Debra Ann Caputo, elementary teacher, School 3; Charlene Jackson, elementary librarian, schools 3 and 8; Anna Jannicelli, kindergarten teacher, schools 3 and 10; Angela Longo, social studies teacher, middle school; Sheri-Lynn Porcelli, elementary physical education, schools 5 and 7; Janice Rienzi, elementary teacher, school 9; Donald Roll, physical education, high school; and Maria Zapantis, elementary teacher, School 7.

In addition to hiring additional personnel, the school board also approved a resolution transferring personnel within the school system.

They are: Mrs. Roxane Flocke from School 3 to School 7; Mrs. Carol Cofone from School 10 to School 9; and Mrs. Carol Spina from School 9 to School 10.

Car lands upside down in river

Four persons were injured and a 20-year-old Kearny driver ended up in the Passaic River as the result of a car accident on Route 21 in Belleville this past Saturday morning.

The Kearny driver, Alfred Bermel, was driving a 1974 Buick Regal that landed upside down in the Passaic River. Bermel, who doesn't have a driver's license, had a passenger in the car. Both fled the scene of the accident.

Another two vehicles crashed after being cut off by Bermel's car. Four occupants of one car were taken to Clara Maass Medical Center while the driver of the other car was not seriously injured.

Bermel later turned himself in to Belleville Police. He was charged with driving without a license, careless driving, leaving the scene and giving false information.

St. Anthony's celebrates feast

A feast in honor of St. Bartolomeo will be celebrated Tuesday, Aug. 20 through Sunday, Aug. 25 on St. Anthony's School playground, 25 North 7th St.

The feast, which begins each day at 6:30 p.m., except for Saturday and Sunday, consists of food and games and rides. On Saturday, Aug. 24 and Sunday, Aug. 25, the feast will begin at 4:30 p.m. and 2 p.m., respectively.

Man swims river to escape police

A Bergen County man swam across the Passaic River last Wednesday morning to avoid security agents from the K-Mart on Main Street in Belleville.

Leonard Longobardo, 35, ran from the store after security guards allegedly saw him steal several bottles of aspirin. The guards attempted to chase Longobardo on foot when he jumped into the nearby Passaic River and swam across to North Arlington.

Police apprehended Longobardo there and was transported to Belleville headquarters. Officers Joe Richuso and Frank Malfatto made the arrest.

Longobardo, a resident at the Bergen County Center for the Homeless in Hackensack, told police he had taken the aspirin for his sick 15-month-old baby. Longobardo, who was released without bail until his court hearing, is wanted by the North Arlington Police for another offense.

Merchants talk with EDC about low-interest loans

Businesspeople plan improvements to properties on Washington Avenue

By Michelle Jeannotte
When the Belleville Board of Commissioners voted against blight this past June, they showed their faith in the businesspeople by giving them a chance to improve the look of Washington Avenue on their own. Some have taken advantage of the opportunity, others have not.

Despite the ongoing effort by the Belleville Redevelopment Agency to have the southern portion of Washington Avenue declared blighted, merchants along the thoroughfare have been making improvements or have plans to do so.

Some businesspeople even took advantage of the Financial Business Day sponsored by the board of commissioners in conjunction with the Economic Development Corporation of Essex County (EDC). The EDC offered Belleville businesspeople low-interest loan programs as well as other property improvement programs.

In a random survey, three property owners contacted in the southern portion of Washington Avenue (south of Town Hall) said they had made improvements or were planning to do so.

Sal Germenario, owner of Fran's Cleaners of 135 Washington Ave., said he filed an application with the EDC but was waiting to meet with them this past Tuesday. He said filing with the EDC for a low-interest

loan was not as simple as he thought it would be. He said that a figure of \$200 in lawyers' fee for the loan approval was mentioned in a meeting with an EDC staff member.

"If I have to pay \$200 for a low-interest loan plus the interest," Germenario said, "I needed to get a new boiler and I just got it today (Monday). I wasn't looking for aggravation, so I went to a bank."

Germenario, who has had the business for the past four-and-a-half years, said his father had the business on the avenue for more than 30 years.

Yerg Printing, a business started in Belleville in 1909, has been on the avenue for more than 20 years, Frank Marmo, the owner's son-in-law, said.

"I did have an appointment with EDC," Marmo said. "As far as our building is concerned, we received a rating of excellent so there are no improvements necessary to the outside. However, through the EDC, we have been able to improve our machinery."

Marmo said that Yerg Printing will be purchasing a new printing press once it receives a loan approval from Peoples Bank. Once Peoples approves the loan, Marmo said, the EDC will reimburse Yerg Printing \$25,000 of the \$100,000 it spends on the new press.

"We also found out through

(Continued on page 4)

Is township's petition to Wanaque filed?

Although most of the severe drought restrictions have been lifted, Belleville still may be faced with water problems in the future.

A controversy as to whether Belleville has officially petitioned to be an owner in its own water supply system seems to be brewing. Frank A. Orechio, chairman of the Wanaque South Project, recently said that Belleville has been slow with its petition for ownership.

"Bloomfield and Nutley have perfected their applications," Mr. Orechio said in a recent

OBC-TV interview. "Belleville hasn't."

"Belleville passed an ordinance a couple of years ago and North Jersey approved it, but then they have to file a petition with the Department of Environmental Protection for participation in Wanaque," Mr. Orechio continued. "As of this hour, it hasn't been done and it should be done. Belleville acted quickly in adopting an ordinance in 1982, but I don't know why they haven't gone further."

(Continued on page 13)

Petition argues play by adults at School 4

By Kara Laczynski
A petition to remove the basketball court from the School 4 playground was presented to the Belleville Board of Education at its meeting Aug. 5.

Sixty-one signatures of neighbors of the Magnolia Street playground appeared on the petition.

According to Dennis Buckley, Belleville Recreation Department supervisor, the baskets were removed about six months ago by Magnolia Street residents to dissuade the many adult non-residents who use the court from doing so.

The baskets were re-installed one month ago at a Magnolia

Street resident's request with the approval of Mayor Michael Marotti, Buckley said.

School board member John DiStasi was opposed to removing the baskets, saying that "this would penalize our own citizens."

A compromise solution, which would ban non-residents from using the court and require adults to obtain a municipal permit to play, was agreed upon by most school board members.

Further discussion of this issue will take place at the next school board meeting, Monday, Aug. 19, at the board complex, 190 Cortlandt St.



Making Improvements - Richard Gencarelli, second left, and Andy Mastandrea, right, of A. Mastandrea and Sons, Inc., of Nutley finish off some touches on the front of the new Washington Avenue home of Century 21 Homes R Us. Looking on is Century 21 Homes R Us co-owner Bruno Marino. - Photo by Michelle Jeannotte.

Free program offers supplemental foods

By Michelle Jeannotte

Under a federally-funded supplemental food program, pregnant women, infants and children who are nutritionally deficient are provided with foods necessary for growth and development.

The program, WIC (Women, Infants and Children), is provided for pregnant women (up to six months) or those breastfeeding (up to one year), infants (up to 1 years old) and children (ages 1-5). The program is offered to insure a healthy diet necessary for a child's developmental stages.

Through the efforts of Thomas J. Longo, Belleville health officer, monies were obtained to provide residents with an office located in the Public Affairs Building, 383 Washington Ave. Before the opening of the Belleville office last week, the 100 residents involved in the program had to travel to the Nutley Health Department, one of six other communities which offers the service.

The program, which follows

the same guidelines as a school lunch program, is provided for low income families. Once a form is filed, applicants are screened to see whether they are nutritional risks or whether they suffer from anemia or lead poisoning.

"When we screen applicants, we check height and weight as well," Hazel Reiser, program coordinator/nutritionist, said. "We then make graphs of each applicant to keep track of their growth. Children and infants are screened every six months."

If applicants are found to be nutritional risks, Reiser said, they are then put on the program which provides them with foods necessary to a nourishing diet. Factors determining nutritional risk include anemia, inappropriate patterns of growth, high risk pregnancies, history of premature births, low birth babies, still births and inadequate nutritional patterns.

Once applicants are found to be nutritional risks, they are

(Continued on page 13)



Gas Tank Leak - A worker from a nearby towing service removes one of the tires of this United States Lines truck last Thursday. The truck stopped along Cortlandt Street near William Street because of a gas tank leak. - Photo by Michelle Jeannotte.

Broadway and Peoples banks form Bankers Financial Services

As a major step forward in applying the latest state-of-the-art computer technology to benefit bank customers in North Jersey, Bankers Financial Services Company has been formed as a joint venture of Broadway Bank & Trust Company, headquartered in Paterson, and Peoples Bank, N.A., whose main of-

fices are in Belleville, Broadway Bank President Peter M. Kolben and Peoples Bank President William Hildebrandt announced. Initially, the new data processing services will be made available to Broadway Bank, a member of Broadway Financial Corporation; and Peoples Bank and Carteret Bank and

Trust Company of Carteret, both members of Peoples Bancorp. Presently, discussions are being held with other banks to utilize the facilities available through BFSC. Several other independent banks are expected to join the company during 1986. In explaining the formation of the new venture, Mr. Kolben and Mr. Hildebrandt pointed out that a consolidation of the data processing facilities of Broadway and Peoples would reduce each company's costs by an estimated 40 percent, and more importantly, would give each bank an opportunity to offer its customers the most

technologically advanced products and services at an affordable cost to each bank. The highly specialized financial services computer systems, software and technology to be used by Bankers Financial Services Company were developed by Mellon Bank of Pittsburgh. These systems will provide an on-line environment and extensive data base capabilities which will tie together various products used by customers into a unified package of services and give them instant, detailed information about their accounts. Installation of the new

programs and services, which will include on-line teller features integrates with the banks' ATM networks, is scheduled for completion prior to year's end. Officers of Bankers Financial Services Company are Peter M. Kolben, chairman; William Hildebrandt, president; John McLaughlin, treasurer; and William Brown, secretary. Main offices of the company are at 100 Hamilton Plaza, Paterson.

Belleville residents may contact the Essex County Home Economics Extension Service, 125 Fairview Ave., Cedar Grove, N.J. 07009, or at 239-5841 to receive this newsletter series.



Bank Consolidation - William Hildebrandt, left, president of Peoples Bank, N.A., and Peter M. Kolben, right, president of Broadway Bank, sign an agreement forming Bankers Financial Services Company.

Rothhauser will discuss astrology at public library

Kores Rothhauser will offer a discussion on astrology Monday, Aug. 19, 7 p.m., at the Belleville Public Library, 221 Washington Ave. "Astrology is the science of timing, not fortune telling," Rothhauser said. Today, Rothhauser's friend puts together natal charts, which are circular representations showing the location of each of the nine planets, based on the time, day, year and place

in which an individual is born. Rothhauser then analyzes the individual charts. In addition, she does progressed charts, showing changes in natal charts, as a person grows older, answering questions, making predictions and conducting astrological parties.

"Daily predictions in newspapers are hardly credible," Rothhauser said, "because the forecasts are generalized to apply to everyone born during the same month, regardless of differences in time, day, year and place."

A native of Florham for 28 years, Rothhauser first became interested in astrology years ago when she began thinking about returning to the working world after bearing three children. She read, attended classes and met at others' homes to study and to prepare astrological charts. To register for the program, call the library at 759-9200.

ADVERTISEMENT

H & R Block, which has been teaching income tax courses for 30 years, is offering a basic income tax course starting September 5 and 6 with morning, afternoon and evening classes available in Belleville, according to District Manager Bert Tobia.

TROISE
INSURANCE
AGENCY
ALL FORMS OF INSURANCE
 Auto • Motorcycle • Truck
 Free Computer Quote
 Personalized Service
759-4100
 172 WASHINGTON AV BELLEVILLE
(ACROSS FROM MOTORCYCLE MALL)

NOTARY PUBLIC

1885
1985

100 Years of Uninterrupted Dividends

FIRST DeWITT

YOUR FULL SERVICE FINANCIAL CENTER

SAVINGS SERVICES
 MONEY MANAGEMENT
 INSURED INVESTMENTS

- MONEY MARKET ACCOUNTS
- TAX DEFERRED IRA'S
- SHORT, MEDIUM, & LONG-TERM CD'S
- CHECKING PLUS INTEREST • PASSBOOK ACCOUNTS
- DIRECT DEPOSIT OF SOCIAL SECURITY & GOVT. CHECKS
- HOLIDAY CLUBS

High Rates Paid At All Times!

LENDING SERVICES

- MORTGAGE LOANS • HOME IMPROVEMENT LOANS
- CONSTRUCTION LOANS • STUDENT LOANS • CAR LOANS

 Drive In Banking At All 9 Offices

HENRIK TVEDT President & Chief Executive Officer

FIRST DeWITT
SAVINGS
CORPORATE HEADQUARTERS, 8 POMPTON AVE., CEDAR GROVE

AND LOAN ASSOCIATION
 BELLEVILLE • BLOOMFIELD • CEDAR GROVE • HOPATCONG
 BRICKTOWN • PARSIPPANY
 TELEPHONE **751-2800** ALL OFFICES

Hypnosis

Stop Smoking • Lose Weight
Eliminate Phobias

CLINICAL HYPNOSIS & SUPPORTIVE COUNSELING

CALL FOR CONSULTATION:
759-0110

Ulara Maass Professional Center
Belleville, N.J.

20%
OFF

ALL SUMMER ITEMS

- All Suntan Lotions & Suntan Oils
- Sunglasses
- Insect Repellents

LOOK

- * Natures Bounty® All Natural KLB6 Grapefruit Diet

100 Tab Reg. \$8.75 Now \$4.69

- * Natures Bounty® Herbal Diet Kit

Compare to Herbal Life at \$50
Reg. \$24.95
Now \$14.95

"We Have The Lowest Prices on Diapers!"

Look For Special Values On The Back Of Your Grand Onion Shopping Receipt

Good Health Pharmacy

313 Union Ave. Belleville
759-2761
Mon.-Fri. 9:30 a.m.-8 p.m. • Sat. Open 'til 6 p.m.

CARMINE MILICI'S

Plaza Men's Store

Buy One — Get ONE FREE
 Thurs. August 15 thru Mon. August 19
BUY ONE
 SUIT OR SPORT JACKET
 AT Regular Price Get One

Can't use 2? Bring a Friend!

BUY TWO
 DRESS OR SPORT SHIRTS
 AT Regular Price Get One

FREE!

FREE!

FREE!

Stock Up On Silk & Polyester TIES
 Buy 2 At Regular Price Get One

Plaza

higher price prevails slight charge for alterations

men's store
 "The Alternative"
 363 Franklin Ave. Belleville
(Corner of Plaza at Joralemon St.)
759-0019
 Special Store Hours For Sale Thurs. 9:30 - 9; Fri. 9:30 - 9:00; Sat. 9:30 - 5:30

Medication policy introduced to board

Superintendent of Schools Michael Nardiello introduced an administration of medication policy for students at the Belleville Board of Education meeting last Monday night.

The policy, which will be voted on at the board's meeting Aug. 19, was formalized on the basis of the State Department's recommended guidelines.

The policy reads as such:

"The parent or guardian should provide a written request for the administration of the prescribed medication at school;

"Written orders are to be provided to the school from the private physician, detailing the diagnosis or type of illness involved, the name of the drug, dosage, time of administration and the side effects;

"The medication should be brought to the school in the original container, appropriately labeled by the pharmacy or physician;

"The school physician should review and approve, in writing, the orders of the private physician;

"The school should provide a secured, locked space for the safe storage of medication.

Prescription drugs should be kept locked at all times;

"The certified school nurse or parent/guardian is the only person permitted to administer medication in the schools;

"The records or documentation for administering medication to students must be maintained by the school nurse."

The policy, if approved, will become effective Sept. 1.



Signs Proclamation - Mayor Michael Marotti, center, recently signed a proclamation declaring August as Social Security Month in Belleville. The proclamation was signed in recognition of the Social Security Act's 50th anniversary. With Mayor Marotti are Katherine Sandford, left, field representative for the Social Security Administration, and Catherine Christoff, district manager for the Social Security Administration.

Mayor Marotti declares Social Security month

Mayor Michael Marotti recently signed a proclamation declaring August as Social Security Month in Belleville.

In honor of the 50th anniversary of the signing of the Social Security Act, Mayor Marotti issued the proclamation in Belleville, which has more than 6,600 residents receiving Social

Security benefits. They include retirees, widows, children and disabled individuals.

Approximately \$2,750,000 in Social Security benefits is sent to Belleville residents each month.

The Social Security Act was signed Aug. 14, 1935.

Irvin Folk will display gem technique

Belleville resident Irvin Folk will show his "Folkstone," a technique he developed to utilize varied gemstone material in the 13th Annual Gem & Mineral Show of the New Jersey State Science Association, titled "The Magic of Minerals."

The show will be held Aug. 17, 9 a.m. to 6 p.m. and August 18, 9 a.m. to 4 p.m. at the new Rec Center at William Paterson College, 300 Pompton Avenue, in Wayne.

More than 65 lighted exhibit cases of private individuals and clubs featuring crystals, fossils, "one-of-a-kind" hand-made jewelry, stamps and memorabilia will be accompanied by the rare opportunity to view museum displays from the prestigious Smithsonian's Museum of Natural History.



BEST CAR WASH IN AMERICA




FIRST AND ONLY CAR WASH IN AREA TO USE

"HOT GLASS"

A New Formula Heated to 130° and Applied Hot!

Every window of your car, inside and out polished and cleaned for crystal clear windows or your money back - removes all film and wax from windows. Every car also receives:

- Polish Wax (reg. 3.00 extra) **FREE**
- Underwash (reg. 1.50 extra) **FREE**
- Wire Wheels (reg. 1.50 extra) **FREE**
- Front Mats Washed (reg. 1.00 extra) **FREE**
- Interior Vacuum
- Soft Cloth Wash
- Steam Bath - Bumpers, Lower Panels, Chrome, White Walls and Hub Caps Steam Cleaned **FREE**


\$6.14 + tax (no extra charges)

TIP-TOP CAR WASH

485 Ridge Rd. No. Arlington, N.J. 991-3629


Use Nutley or Kearny Bridge to Ridge Rd.

Open 7 Days A Week - Sunday Til 1:30 P.M.




THE RESULTS PEOPLE.

BAUMGARDNER AGENCY



Covering
Bloomfield • Glen Ridge - Nutley - Belleville
378 Broad Street, Bloomfield, N.J. 743-8382



JAY BAUMGARDNER 'GRI
BROKER

3-4 BEDROOM COLONIAL
Overlooking Park.
Immaculate house with fireplace and 2-car garage.
Asking \$132,000.
Possible financing.

TOWNE DELICATESSEN & CATERERS

650 JORALEMON ST. BELLEVILLE N.J. 751-3935

Week of August 15th thru August 19th

Proudly Presents

THE DELI SPECIALS

Now Featuring Thumann's Deli Franks
Fresh Bagels - Saturdays & Sundays

½ lb. ROAST BEEF
\$2.38

½ lb. Hormel HARD SALAMI
\$1.83

½ lb. Roasted TURKEY BREAST
\$1.99

½ lb. Slicing PROVOLONE
\$1.48

Residential - Industrial - Commercial

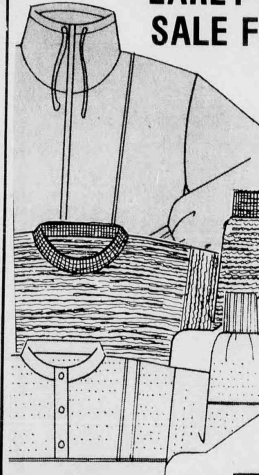
Catering

Join Our Free Sandwich Club

Member of Belleville Chamber of Commerce

EARLY BIRD BACK-TO-SCHOOL SALE FOR 3 DAYS ONLY

FRIDAY, SATURDAY AND MONDAY
(ALL MERCHANDISE LOCATED ON LOWER LEVEL)
WARDROBE BUILDERS for HIGH SCHOOL and COLLEGE BOUND STUDENTS



FASHION JEANS 21⁹⁰ to 39⁹⁰
From Vercaro, Gasoline and Cotler. Sizes 28 to 36. REG. 30. to 56.

LAYERED LOOK ACTIVE TOPS 14⁹⁰
By Winner Wear in Short and Long Sleeves. REG. 22.00

CHAMS SWEATER VESTS 14⁹⁰
Charcoal, Blue and Black. S to XL. REG. 23.00

BOYS Sizes 8 to 14 11⁹⁰
LONG SLEEVE THERMAL SHIRTS Steel, Navy, Garnet. S to XL. REG. 15.00

CORDUROY PANTS 15⁹⁰
Grey, Deerskin, and Charcoal. Reg. and Slims. REG. 22.00

WARM-UP SUIT 3 PCS. 24⁹⁰
Shirt-Vest Fleece-Pant. REG. 34.00

BOYS SKI JACKETS 46⁹⁰
Rugged Poplin Shell with Spun Poly Lining - 8 oz. Chr. Black and Grey or Taupe and Black. REG. 62.00

SPECIAL OCCASIONS: SUITS and SPORTSCOATS for YOUNG MEN and BOYS (8 to 20) Including Huskies and Slims.
All Alterations Done on Premises.

CHAMS - SERGIO VALENTE - COTLER - JOHN WEITZ - CHOOGO KENNINGTON - BOATHOUSE ROW - OCEAN PACIFIC

STORE HOURS:
Daily 10 to 5:45 • Till 9 Mon. and Fri. Sat. till 5:30
JNC and ALL MAJOR CHARGES HONORED
PARKING PLAZA IN REAR OF STORE
667-9200

JNC
the menStore
Nutley Center, Nutley

Since 1964

Belleville Times

Serving Belleville Since 1909 (USPS 049-220)

Published Every Thursday
At 155A Washington Ave.
Belleville, N.J. 07109

Annual Subscription \$14.00
Senior Citizens \$7.00

Second-Class Postage Paid
At Newark, N.J.
Postmaster: Send address
changes to The Belleville Times,
155A Washington Ave., Belleville, N.J. 07109

Publisher: Frank A. Orechio
Assistant to the Publisher:
Michelle Jeannotte

To report news and other items
of interest, call:
759-3200

Just For Today

Lord, for tomorrow and its needs,
I do not pray;
Keep me, my God from stain of sin,
Just for today;
Let me no wrong or idle word
Unthinking say;
Set Thous a seal upon my lips,
Just for today.
Let me both diligently work,
And duly pray;
Let me be kind in word and deed,
Just for today;

Let me in season, Lord, be grave,
In season, gay;
Let me be faithful to Thy grace,
Just for today.
In pain and sorrow's cleansing fires,
Brief be my stay;
Oh, bid me if to-day I die,
Come home to-day;
So to-morrow and its needs,
I do not pray;
But keep me, guide me, love me, Lord,
Just for to-day.

Happy Day!

Gerard and Josephine Frunzi of Belleville celebrated their 70th wedding anniversary on Aug. 1! What a joyous occasion!

As youngsters, the couple met in Italy, eventually found their way to America, and on Aug. 1, 1915, were married in the original Holy Family Church on Harrison Street (an experience my parents enjoyed 10 years earlier).

Seventy is a big number - it represents the biblical three score and 10. But to be lucky enough to be married to the same spouse for 70 years must be a gift from God.

The Frunzis have three daughters, two sons, 12 grandchildren and 13 great-grandchildren. A family dinner celebration marked the occasion - an occasion only too rare in life.

Is the marriage institution durable? Ask the Frunzis. Is it worthwhile? Ask the children

and grandchildren. Does 70 years of sharing life with a mate make it more meaningful? The Frunzis will answer, "Yes, indeed."

A 70th anniversary should give all of us in the community a moment of pause to join the Frunzis in celebration of this very unusual - very special - and very happy occasion.

We know the community joins us in congratulating the Frunzis on the occasion of their 70th anniversary, wishing them God's blessings and continued good health and happiness.

Where To?

The Belleville Redevelopment Agency wants the township commission to give it new instructions.

Belleville Redevelopment Agency member Joseph Dasaro appeared before the township commission observing that the group's success has been limited, but nevertheless, Belleville is a commodity which is very marketable. Mr. Dasaro believes the Washington Avenue improvements already accomplished or in process are only minimal and the future of Washington Avenue needs to be reaffirmed and redressed.

Mr. Dasaro properly pointed out that the Belleville Redevelopment Agency gave high visibility to the need for revitalization of Washington Avenue, as well as the rest of the community.

The Belleville Redevelop-

ment Agency has served a very useful purpose. Its members are dedicated volunteer workers who have accomplished a very worthy objective in the life and times of Belleville.

Perhaps the time has come for the Belleville Redevelopment Agency to receive new marching orders. The Belleville Redevelopment Agency has too much brainpower to be neglected. It deserves the immediate attention of our township commissioners.

Editorial was 'fresh air' says Assemblyman Kelly

To the editor:

Your editorial of August 1 entitled "Tom Kean's Environment" was what I consider to be a breath of fresh air in comparison to a great deal of political rhetoric and baseless promises from so-called experts and supporters of the environment in the area, including our representatives in the State Assembly.

You correctly pointed out that New Jersey has made tremendous strides in the area of toxic waste clean-up and in environmental programs and I also agree with you about the Governor's need of a little more help and less carping from so-called champions of the environment.

The Governor's most recent proposal, the Environmental Trust Fund, is getting short shrift from the Democrats in the Assembly and on the merits the program is worthy of legislative support.

The major thrust of the Fund is to provide a stable source of funding and an adequate source of funding for New Jersey's long-term environmental needs.

New Jersey is under federal mandate to build wastewater treatment plants. Governor Kean's proposal would set up a revolving loan fund to generate over \$2½ billion to begin building and upgrading all of the 290 sewage treatment projects New Jersey needs to keep its water clean - in-

cluding projects in Verona, Cedar Grove, Montclair and Nutley.

The alternatives are what? If sewage is not treated are we to settle for raw sewage dumping in our oceans and rivers?

The Environmental Trust Fund directly addresses the need for sewage treatment plants, resource recovery plants for recycling garbage to energy and landfill closures. The key question is why have our representatives in the State Assembly, Buddy Fortunato and Stephen Aduato, Jr., seen fit not to support the Governor's plan?

The legislator's have complained of the lack of oversight by the legislature. Yet, the Governor's plan calls for legislative oversight. They get final control over project selection.

Governor Kean's plan for funding environmentally needed projects is a sound one. Better than the Democratic alternative. It provides more needed revenues at less cost to the taxpayers.

Certain members of the legislature might be simply looking for log-rolling and pork-barreling opportunities. Playing politics with the environment.

What the citizens are looking for, I'll bet, are representatives who have the courage to do what's right.

John Kelly
Republican candidate for
Assembly (Dist. 30)

Letters to the Editor

Belleville doesn't need assistant superintendent

To the editor:

Belleville does not need another assistant superintendent of elementary curriculum/part-time principal of School 9.

What School 9 needs is a full-time principal as there has been all these years. This proposal seems to be an opportunity to create a job for more money. The Consolidated Parents Association now supports this idea; where have they been in the past?

When I ran for the board of education last April, I said in one debate that High School Proficiency Test

scores would be bad and they were. Belleville's schools need to get back to basics. The parents and taxpayers do not want another administrator.

New Jersey ranks second in the nation for costs of education. New Jersey ranked 44th in the nation in proficiency testing. This is proof that our money is not buying good education.

We do not need another assistant superintendent. We do need better teachers.

Kevin G. Kennedy
45 Hornblower Ave.

Golden Comments

by James R. Golden

A brief article, which appeared in The Belleville Times not too long ago, described the fact that the township is still waiting to be paid \$365,000 plus interest owed by Universal Foods, the former yeast factory on Mill Street.

The corporation refuses to pay the bill until ordered by the court. Such a suit is now pending, according to the township attorney.

Universal Foods sold the factory and property to Cerami Construction last year with a water lien attached. The township attorney said the township could not prohibit Cerami from buying the property which is being used for condominiums.

He said once certificates of occupancy are issued, the township can begin collecting tax ratables while waiting to be paid the \$365,000.

The question must be raised: By whom is the \$365,000 plus interest to be paid? Universal Foods or Cerami Construction, who bought the property with the water lien attached? Surely, in so large a sale, attorneys represented both parties. Why did the township pay the Passaic Valley Sewerage Commission bill for Universal Foods and then bill Universal Foods? Is there any "paper" or contract to explicitly cover such an arrangement or contract?

Any lawyer knows that an outstanding debt owed a government agency is a primary obligation, which if unmet or unpaid, entails the slapping of a lien upon the property which must be paid prior to the granting of a clear title.

Sure, if certificates of occupancy are issued, the township can begin collecting tax ratables, but what about the \$365,000 plus interest? Perhaps it would be prudent to collect that obligation from either, or both, of the parties to the sale before granting certificates of occupancy, otherwise,

the township might have to wait a long time to be reimbursed or possibly not getting paid at all.

To fortify the significance of situations of this kind, a similar matter was brought to the attention of the township commissioners this June concerning local assessments levied on property owners back in the early 1960s for sewers, sidewalks and street improvements on Rocco Street, Joralemon Street, Arthur Street, High Street, Chester Street, Harvard Street and Greylock Parkway which have remained uncollected and carried in the report of audit in amounts totaling more than \$160,000 if all are included.

Bonds for these improvements were floated and apparently now paid for with interest by all our taxpayers, although they were assessed as local improvements to be paid for by the benefiting property owners. Why? Benign neglect by the local governing officials. These obligations are still outstanding and should be collected.

unpaid they constitute a lien upon the property which cannot be sold with a clear title until they are paid.

A local assessment board should be set up, with a paid attorney, to compile an up-to-date status of these uncollected assessments and notices sent to the affected property owners who have ignored this obligation which could tie-up sale of the property because of the still outstanding lien thereon.

Were this action taken, it would appear that the outstanding liens, if paid, would more than offset any expense involved through a concentrated effort to collect these obligations, rather than having all the community's taxpayers assuming the payment, as though it were a general improvement, which they were not.

Perhaps they should try harder down at the township hall.

Merchants make plans for fix-ups

(Continued from page one)

the EDC that we can use county programs to hire additional employees," Marmo said.

Presently, Yerg Printing employees 20-25 people of which six are Belleville residents, Marmo said. It has two plants in Belleville, one on Washington Avenue and the other on Ralph Street.

"We want to stay in Belleville," Marmo said. "We were very upset when they (commissioners) were discussing blight. How could we try to have long-term plans with that in the back of our minds. The only places we would be able to go to would be Fairfield or Lincoln Park."

The one problem Yerg Printing has experienced since it has been on the avenue, Marmo said, is the parking situation.

"Our employees have to park on the side streets or keep popping nickels into the meters," Marmo said. "When customers have to come by, they have to try to find a parking spot on the avenue. That could be difficult."

Sal Possumato and his wife, Nicki, owners of the Belleville Tee Party, 137 Washington Ave., say they have been thinking about filing with EDC but have not made any definite plans. They did say if any improvements were made to their business property, it would be interior.

Another Washington Avenue merchant planning improvements to his property is Louis Cienicia of Charles Jewelers, across the street from the municipal parking lot.

Cienicia, whose business has been on the avenue for more than 20 years, plans to add a second-floor office to his building at 163 Washington Ave. His application received conceptual approval by the Belleville Planning Board last Thursday night. Final approval for the project will be given at the board's next meeting in September.

Century 21 Homes R Us, which is housed at the northern end of the avenue at 544-547 Washington Ave., will be moving into a new home across the street come September, says John Gomez, co-owner.

Gomez and his partner, Bruno Marino, recently purchased the double-store front which housed Umberto's. Construction, expected to be completed by the end of this month, is now under way by A. Mastandrea and Sons Inc. The new building will house two interviewing rooms, two executive rooms, two powder rooms, a receptionist area and office space for the 12 sales people presently employed by Century 21 Homes R Us, Gomez said.

Construction costs are estimated at \$60,000, Gomez said.

"We have been growing ever since we came to Belleville," Gomez said Monday. "We are renting where we are now and when the building across the street went up for sale, we thought it would be better owning than renting."

Gomez said that he did file an application with the EDC, but because construction began before the application, Century 21 Homes R Us was not eligible.

One program offered by the EDC is the Community Economic Reinvestment Program (CERP). This interior/exterior rehabilitation program, for tenant or business owner, offers a maximum of \$8,500 or 20 percent of \$20,000 or 15 percent of \$50,000. Loan structure for this program is broken down into three parts: 70 percent financing from a bank; 20 percent from CERP; and 10 percent of equity. The term is five years with interest at 2.5 percent.

A second and third part of CERP offers loans for facade improvements or exterior renovation only and purchase of machinery or equipment, respectively.

For information about any low-interest loan program, contact the EDC at 759-5717.

Lori Ann Diamond receives county award

Lori Ann Diamond of Belleville was among seven Essex County employees recently honored by Essex County Executive Peter Shapiro.

Since the employee awards program began, 44 employees have been singled out for their exemplary work, Shapiro said. To be selected for an award, employees must meet at least one of the following criteria:

- Change work procedures to significantly improve the efficiency and effectiveness of the government;
- Implement ideas, policies or programs to help the county at least \$5,000 during the period of review;

- Increase services without increasing costs by better use of existing resources;
- Improve the work environment to lead to a measurable improvement in productivity; and

- Identify and secure new revenue sources for the county.

Diamond, an employee of the Public Works Department, was honored for revamping the accounting system for road restoration work performed by the Engineering Division.

"Because of her diligent reorganization," Shapiro said, "\$10,000 was collected, which would otherwise have been lost."



Honored Employee - Lori Ann Diamond of Belleville, who works for the Essex County Division of Engineering, was recently cited as one of Essex County's outstanding employees and was presented with a \$150 savings bond from County Executive Peter Shapiro. Diamond was responsible for collecting more than \$10,000 in delinquent bills.



Distinguished Service Award - Dr. Thomas G. D'Elia of Belleville (right) recently received a "Distinguished Service Award" from the New Jersey Chiropractic Society (NJCS) at its annual convention in Atlantic City. The award, given by Dr. J. Daniel Sheeley, is given in recognition of continuing reliable and distinguished involvement in a variety of NJCS activities. Dr. D'Elia is a member of the NJCS Board of Directors and New Practitioners Seminar Committee. The NJCS represents approximately 1,000 licensed members nationwide.

Another DeCarlo Listing!



BLOOMFIELD STARTER HOME
\$129,900. Well kept 3 Bedroom Home features natural wood-work Living Room with Fireplace, Dining Room, Sun Room, Kitchen with Pantry, 2 Car Garage. **SEE IT TODAY!**

Ann DeCarlo

AGENCY/REALTOR
880 BROAD ST., BROOKDALE, BLOOMFIELD
748-5288



RELO Inter City
Relocation

BAR-B-Q SPECIALS

Choice
**FILLET
MIGNON**
\$3.69
lb.
5-7 lb. avg.

**FREE
PARKING**

Extra Lean
Cottage Ham
\$2.39 lb.

BAR-B-QUE
PURE PORK
SAUSAGE
\$2.09 lb.
PEPPERS
\$0.00

Extra Lean
**Pork
Cutlets**
\$2.49 lb.

**CHUCK
CHOP**
\$1.89 lb.
5 lbs. - \$8.95
No Filler Added

LEAN MEATY
COUNTRY-STYLE
**SPARE
RIBS**
\$1.89 lb.

ITALIAN STYLE
**VEAL
CUTLETS**
\$4.09 lb.
CUT 2
FROM
LEG

THUMAN'S
**HOT
DOGS**
5 lbs. \$11.49

**WE
ACCEPT
FOOD
STAMPS**

100% PURE PORK ITALIAN
SAUSAGE
HOME MADE \$1.99 lb.

*ALL BEEF, HOME MADE EXTRA LEAN!
HAMBURGER PATTIES \$1.99 lb.
GREAT FOR THE GRILL 5 lbs. \$9.25

VITO SYLVESTRO'S

* **GARDEN** *

MEAT MARKET

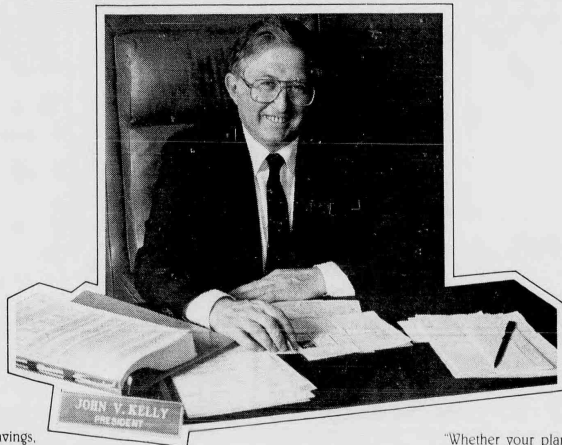
166 GARDEN AVE.

BELLEVILLE, N.J.

Closed Mondays During August

PHONE
**759-
1069**
HOME
DELIVERY

At Nutley Savings 'Home Improvement' Is A Household Word



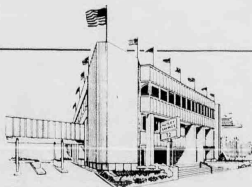
"At Nutley Savings, Home Improvement is serious business. After all, we built our reputation helping families buy and improve their homes.

"Last year, we doubled the amount of home improvement money loaned to qualified borrowers and this year we're out to double it again.

"So if you're looking to nail down a home improvement loan, our rates are competitive with any lender in New Jersey. Our experienced loan officers are ready to help you cut through the paperwork so that you can get on with the serious business of improving your home.

"Whether your plans call for a new addition, a remodeled kitchen, an extra bath, a pool, deck, or a landscaped lawn, plan on calling us. At Nutley Savings, Home Improvement is a household word."

—John V. Kelly
President



Nutley Savings
AND LOAN ASSOCIATION

MAIN OFFICE
371 Franklin Avenue • Nutley, N.J. 07110 • 661-3200
BRANCH OFFICE
221 Washington Street • Newark, N.J. 07102 • 623-7090

Grand Opening Video Blast-off

Win
365 Free
MOVIE RENTALS

**SUPER
SELECTION!**

**BEST
MOVIE
SELECTION
IN TOWN!**

**FREE
Balloons!**

RENT
ANY MOVIE
\$1.99

Enter
Today!
No Purchase
Necessary.

No Club
Membership

NO CLUB
MEMBERSHIPS



BRING THE STARS HOME TONIGHT!

Offer expires 9-18-85

7 Lackawanna Place, Bloomfield, N.J.
429-9681

Events in the Area

VFW Post 275 picnic Aug. 25

Younginger-Alden Jr. Post 275 V.F.W. will hold its annual picnic Aug. 25 at the post home, 17 Belleville Ave., Belleville.

Tickets are \$7 for adults and \$4 for children under 12. Featured will be hot dogs, hamburgers, chicken, clam chowder, corn on the cob, sausage and meatballs.

Recovery Inc. meets Wednesday

Recovery Inc., a community mental health self-help group for nervous persons, meets every Wednesday at 7:30 p.m. in the Parks Department, 44 Park Ave., Nutley.

The meeting is free and open to the public. For more information, call 766-7466.

Make Today Count at Maass

"Make Today Count," a support group designed to help patients and their families deal with cancer and other life-threatening diseases, meets 7 p.m. every Monday in the third floor dining room of the Continuing Care Center at Clara Maass Medical Center, Belleville.

The sessions are free and open to the public. For more information, call 450-2230.

Flea market, attic sale Sept. 7

Covered Bridge Squares Dance Club of Nutley will hold a flea market, attic and bake sale 10 a.m. to 4 p.m. Sept. 7 at the Nutley Museum, 65 Church St.

Rain date is Sept. 14. For information, call 759-0864.

Street dance scheduled Aug. 17

A New Beginning will hold a street dance 6 to 10 p.m. Aug. 17 on Chestnut Street above Whitford Avenue, Nutley. The dance is a special event hosted by the singles organization but open to all adult residents of Nutley. DJ music will be by Aerodynamics and hot dogs and soda will be available for sale. Admission is \$4. Rain date is Aug. 18.

A New Beginning is a Nutley-based support organization for single adults, never-married, divorced or widowed. In addition to its special monthly events, the group holds pub mixers the second Wednesday of each month at Allan's Place, 522 Franklin Ave., Nutley.

For more information on the group, which is not limited to Nutley residents, call 661-3357.

Eating disorders group to meet

Belleville, Bloomfield and Nutley residents suffering from anorexia nervosa, bulimia and compulsive eating problems are invited to attend a free self-help group in Livingston which will begin Aug. 19. This is the closest group of its kind to the three communities.

For free information, counseling or referrals, call the eating disorders hotline at 1-800-624-2268.

Festival in the Park Sept. 8

The Nutley Historical Society, the Kingsland Manor Trust and the Nutley Parks Dept. will sponsor the 12th annual Festival in the Park 10 a.m. to 5 p.m. Sept. 8 in Memorial Park which runs from Vreeland Avenue to Chestnut Street, just above Passaic Ave.

For table reservations, call Doug Eisenfelder at 667-3013 prior to Sept. 7. Food and refreshment stands will be scattered through the park and space will be allotted for dealers with flea market items, crafts, artwork, antiques, "attic treasures" and homemade baked goods. Local clubs, church groups and community service organizations will be showcased and the Nutley Little Theatre will present Neil Simon's "Visitor from Forest Hill" at 11 a.m., 1 and 3 p.m. Rain date is Sept. 15.

New singles group is forming

The first meeting of the Singles Connection, a group for mature single, widowed, divorced or separated persons, will be held 8 to 11 p.m. Sept. 5 in the parish hall of Grace Episcopal Church, Highfield Lane and North Road, Nutley.

The group will meet the first and third Thursday of each month for rap sessions and refreshments and to plan social events. For more information, call the church at 235-1177.

Trip to Amish country Sept. 21

Bloomfield Knights of Columbus and Columbiettes are planning a day trip to the Amish country in Lancaster, Pa., Sept. 21. Donation is \$31 per person.

The fee includes bus transportation, breakfast, bus tour and supper at Good and Plenty Restaurant. Call Rose Ruffalo at 743-8688 for reservations.

Devils, DJ's face off Sept. 14

A softball game to benefit the Association of Blind Athletes of New Jersey will be played 2 p.m. Sept. 14 at Smith Field, Rt. 46 and Baldwin Ave., Parsippany. Teams competing are the WNEW-FM Radio DJ's versus the New Jersey Devils Ice Hockey Team.

Donation is \$3 for adults and \$1 for children under 12. For tickets, call Rose Ruffalo in Bloomfield at 743-8688 or Joe Ruffalo in Belleville at 759-3622.

Reunion at St. Clare's Oct. 20

St. Clare Parish, 69 Allwood Road, Clifton, will celebrate the silver anniversary of its school Oct. 20 with a Mass of Thanksgiving at 4 p.m.

The festivities will continue with a dinner dance and reunion at the Westmount Country Club, West Paterson, 6 to 10 p.m.

For more information, call Father Collins or the secretary at 777-7568.

Ethiopian telethon Sept. 28

The Project Ethiopia Committee, chaired by Councilman John Crecco and John Bonnet, will hold a telethon 10 a.m. to 8 p.m. Sept. 28 in the theatre of the Bloomfield Public Library, 90 Broad St.

The committee has raised \$7,000 of its \$15,000 goal to date. All funds are channeled through Catholic Relief Services. Donations may be mailed to Project Ethiopia, care Bloomfield Public Library, 90 Broad St., Bloomfield, N.J., 07003.

Rummage, bake sale Sept. 7

Brookdale Reformed Church, 10 Bellevue Ave., Bloomfield, (at the entrance to Brookdale Park) will hold a rummage and bake sale 9 a.m. to 4 p.m. Sept. 7.

The Church Women's Club will sell baked goods and bargains. Admission is free.

'Anything Goes' opens Aug. 22

The Charles Seller Foundation will present "Anything Goes" by Cole Porter 8 p.m. Aug. 22, 23 and 24 in South Junior High School. Proceeds will benefit three year old Sharon Bertonaschi who suffers from a rare degenerative disease caused by an enzyme deficiency.

The foundation was organized in 1950 when young Charles Seller, a graduate of Bloomfield High School, was crippled in a train accident. A group of concerned friends put on a variety show called "Talent Time" to help defray his medical expenses. A show has been put on each summer for over three decades to aid someone in need.

There's No Better Place To

Pasta Time

Than At

PROUD MARY'S

Restaurant and Lounge

Every Wednesday Night
6 pm to 8 pm in the Lounge
(Starting Wed. July 31)

Different Pasta
Specialties
Each Week

Sausage and Peppers
Tortellini in Red Sauce
Whole Wheat Pasta Primavera
Cheese Ravioli
Fettuccine Carbonara
Melon with Prosciutto
Garden Fresh Salad
Assorted Pastries

Enjoy all these nutritious Italian
Specialties For Only

\$7.95



Restaurant and Lounge

409 Franklin St.
Bloomfield
429-9246

VFW rummage sale set Aug. 19

Belleville VFW Post 275 will hold a rummage sale 9 a.m. to 8 p.m. Aug. 19 at the post home, 17 Belleville Ave.

Night at the races for singles

The Bloomfield Singles Rap Group is planning a trip to the Meadowlands Racetrack Aug. 22. Meet at the library parking lot at 7 p.m. The first race begins at 8 p.m.

Aug. 26, the group will meet at the Civic Center. Members bring games. For more information, call 743-4400, ext. 254.

Concert Band in three concerts

The Garden State Concert Band of Bloomfield will conclude its summer concert series Aug. 30 at a concert in Brookdale Park, Bloomfield, by the Bloomfield-Montclair entrance. Featured soloist will be George Shirley of the Metropolitan Opera and artistic director of the New School for the Arts and Patricia Cioffi, executive director of the New School for the Arts. The band is conducted by Dominick Ferrara, bandmaster and are presented free of charge.

Earlier concerts include tonight at 7:30 at the Village Green of Scotch Plains-Fanwood and Aug. 21 at 7:30 p.m. at Echo Park Lake, Union County-Westfield.

For further information or for an alternate date in the event of rain, call 743-6315 days or 338-8140 evenings.

(To be included in this column, releases must reach us by the Friday preceding publication. Coverage will be limited to events in the Belleville, Bloomfield and Nutley area primarily. Out of the area events will be covered only if space permits. Send releases to Events in the Area, 800 Bloomfield Ave., Nutley, N.J., 07110.

we're STRONG ON SAVINGS

1985 INVENTORY REDUCTION!

SPECIAL DEALS ON QUALITY USED CARS

Get Minutes From Your Dealer's Inventory

1985 EXECUTIVE DRIVEN BUICKS

Factory 12 mo/12,000 mile warranty included in prices!

SOMERSET REGAL, LTD.

V-6, auto trans., pwr steering and brakes, air cond., pwr locks, pwr windows, cruise control, tilt wheel, am/fm stereo cassette, aluminum wheels pwr antenna. Stock #525. 5,836 miles.

LIST PRICE \$13,472 **\$12,124**

PARK AVENUE

SEDAN, w/o pt., seat recliner, p. trunk, dr. grds., read defog., illum. door locks, wire wheel covers, cornering lights, am/fm stereo-cassette, lamp monitors, pwr. antenna, w/std., velour int., EFI V-6, auto overdrive trans., power steering & brakes, pwr. seat/wind./locks, air cond., 1 glass, tilt wheel, cruise contrl., w/w radials, front wheel drive & more! Stk #836. 8,054 miles.

LIST PRICE \$18,024 **\$15,636**

SOMERSET REGAL

COUPE, w/o pt., pwr. locks/wind., mats, molding pkg., pulse wipers, rear defog., air cond., dual mirrors, auto trans., w/w radials, am/fm stereo, w/std.: front wheel drive, power steering & brakes, 4 cyl. & more! Stk #832. 5,572 miles.

LIST PRICE \$11,356 **\$10,071**

SKYLARK LIMITED

4 DOOR, w/o pt., pwr. locks/wind., 1 glass, pulse wipers rear defog., air cond. dual mirrors, auto trans., tilt wheel, w/w radials, am/fm stereo, wire wheel covers, V-6, w/std., power steering & brakes, front wheel drive & more! Stk #078. 6,142 miles.

LIST PRICE \$11,453 **\$10,122**

SKYLARK LIMITED

4 DOOR, w/o pt., cruise contrl., am/fm stereo-cassette, p. antenna, pwr. seat, pwr. locks/wind., 1 glass, pulse wipers, rear defog., air cond., dual mirrors, auto trans., tilt wheel, w/w radials, wire wheel covers, V-6, w/std., power steering & brakes, front wheel drive & more! Stk #077. 6,284 miles.

LIST PRICE \$11,915 **\$10,514**

1983 BUICK ELECTRA ESTATE WAGON

V-8, auto trans., pwr. steering and brakes tilt steering wheel cruise control, pwr. lock, pwr. windows, and more! 41,305 miles

\$10,995

1979 CHEVROLET CAMARO

V-8, auto trans., power brakes and steering, 2 door, air conditioning, am/fm, 60,684 miles

\$4,895

1980 BUICK LESEBRE

V-6, auto trans., power steering and brakes, vinyl roof, am/fm, power windows and locks, 4 door, 42,397 miles

\$4,895

1981 BUICK ELECTRA LIMITED

V-8, auto trans., power steering and brakes, air conditioning, power windows and locks, am/fm, wire wheels, 53,675 miles

\$7,800

1982 BUICK REGAL

V-8, auto trans., power steering and brakes, am/fm, vinyl roof, 2 door, 32, 818 miles

\$6,995

1981 BUICK CENTURY LIMITED

V-6, auto trans., power brakes and steering, air conditioning, vinyl roof, 4 door, am/fm, 54,933 miles

\$5,895

John JOHNSON Buick

prices excl. taxes & MV fee

Greenwood Ave. (Next to Lackawanna Plaza)
MONTCLAIR • 746-8700

SERVICE • PARTS
SALES • RENTALS

The Montclair Area For Over 15 Years!

NEW SEATS NEW SEATS

Franklin 3 Nutley

AMPLE LIGHTED PARKING

Year of the Dragon - R
Volunteers - pg
My Science Project - pg

510 Franklin Ave. Nutley 667-1777

NEW SEATS NEW SEATS

R L C Realty Enterprises

Specializing in
* management * syndications * mortgages
* investment properties * sales

242 Washington Avenue - Suite D
Nutley, N.J. 07110 - 201-667-6565

EXCLUSIVE
Located in Nutley Center — 4 stores, 5 apts.
1 lot 40 x 100. Land approx. 23,000 sq. ft.
to be sold as one parcel — call for appointment

Open 6 days
Sundays by appointment

Our motto is "P.E.C."
Professionalism Efficiency Courtesy

Rosa Lee Capriglione
President
Lic. Real Estate Broker

Frunzis celebrate 70th year



Seven decades - Gerard and Josephine Frunzi of Belleville, who celebrated their 70th wedding anniversary Aug. 1, visited recently with Senator Carmen A. Orechio who presented them with a resolution on the occasion. The couple met in Italy and were among the first to renew their vows at the newly built Holy Family Church on Brookline Avenue, Nutley. They have three daughters, two sons, 12 grandchildren and 13 great-grandchildren. Family and friends gathered recently at the Chandelier in Belleville to celebrate the event.

Stork Club

Danielle C. Pennisi

A third child, a daughter, Danielle Christine, was born to Mr. and Mrs. Joseph Pennisi of Cedar Grove Ave. 3 at Mountain-side Hospital, Glen Ridge. Birth weight was 5 pounds, 11 ounces. She joins Vincent, 12 and Joseph, nine and a half.

Mrs. Pennisi is the former Roseann Lembo, daughter of Mr. and Mrs. Ralph Lembo of Belleville. Mr. Pennisi, son of Mrs. Rose Pennisi of Bloomfield and the late Mr. Joseph Pennisi Sr., is a computer specialist with Burroughs.

Glenn B. Dries

A fourth child, a son, Glenn Bubba, was born to Mr. and Mrs. Dennis Dries of Nutley May 20 at Columbus Hospital, Newark. Birth weight was 9 pounds, 7 ounces. He joins Dion, 12, Elizabeth-Tara, six and Christian, two and a half.

Mrs. Dries is the former Betty Tartell, daughter of Pat Tartell of Nutley and the late Mrs. Lorraine Tartell. Mr. Dries, son of the late Mrs. Bertha Mancuso of Belleville, is a postal worker at the Postal Annex, Belleville.

Gabrielle E.A. DeMers

A second child, a daughter, Gabrielle Elisa Anne, was born to Debra K. Thaler-DeMers and Douglas E. DeMers June 14 in San Jose, Calif. Birth weight was six pounds. She joins Joshua, 22 months.

Ms. Thaler-DeMers is a paralegal and a counselor working with cancer patients and the terminally ill. Mr. DeMers is a senior software engineer with Dataproducts Corp., San Jose. Grandparents are Aaron and Ida Thaler of Nutley and George and Dorothy DeMers of Modesto, Calif.

COLOR

is beautiful but black and white photos reproduce much more clearly. You'll be much happier with the results. Brides: ask your photographer to provide you with a black and white picture for newspaper purposes but tell him you need one BEFORE he comes to the church.

STOREWIDE LIQUOR DISCOUNTS
LIQUOR VALUE
 LOOK FOR MONTHLY SAVING! NAMEBRAND LIQUORS! SAVE! COUPONS THROUGHOUT EVERY STORE! LIMIT ONE COUPON PER HOUSEHOLD OR FAMILY.

ALL ADVERTISED BEERS SOLD OFF THE FLOOR WARM! PRESS HERE! WED. AUG. 14, THUR. FRI. AUG. 28, 1985

SUPER SPECIALS!

- WOLFSCHMIDT VODKA 40% BERNSHIRE SCOTCH 1.6 CALVERT GIN 1.6 PHILADELPHIA BLENDED WHISKEY 1.6 BERNSHIRE RUM 1.6 KAHULA 1.6
- SMIRNOFF VODKA 40% SOUTHERN COMFORT GORDON'S GIN BACARDI RUM LIGHT OR DARK SEAGRAM'S 7
- FONTANA SOAVE BARDOLINO VALPOLICELLA 3.98 1.6
- REHNGOLD LIGHT SCHMIDT'S REG. 6.49 24 12oz. Bottles
- MICHELLE REG. OR LIGHT MOLSON GOLDEN ALE 10.99 24 12oz. Bottles
- ST. PAULI GIRL 13.99 24 12oz. Bottles
- PIPER HIEDSIECK EXTRA DRY 12.99 750ml
- CARLO ROSSI CHABLIS 4.82

COUPON

BUDWEISER

KING OF BEERS!

2.17

8 Pack 7oz. Bottles

COUPON

NUTLEY

HELLER & HELLER OF NUTLEY 200 FRANKLIN AVE. 667-2677

OTHER LIQUOR VALUE STORES LOCATED THROUGHOUT NEW JERSEY

We reserve the right to limit quantities while they last. Not responsible for typographical errors. Products and prices may not be available at all stores. Alcohol prices include state sales tax.



Tropical vacation - Mr. and Mrs. Al Vecchione and Mr. and Mrs. Nicholas Rizzitello flank a member of the "Bermuda Strollers" during a recent vacation at the Souesta Beach Hotel in Bermuda.

St. Valentine's registering students Aug. 27 and 28

St. Valentine's School, 236 Hoover Ave., Bloomfield, will hold registration for kindergarten through grade 7 Aug. 27 and 28, 9 a.m. to 1 p.m. For more information, call 743-2041.

SAVE \$3.00

For Dogs Only

Accredited Professional All-Breed Grooming

Save \$3.00 on pet's first grooming and receive a Free Bone.

Offer good with this coupon only - 9/30/85

COUPON

GRAND OPENING

AUGUST 19th

272 Washington Avenue
 BELLEVILLE 751-9798

SAVE \$3.00

First Lady

UNISEX HAIR ARTISTRY

A LEADER IN HAIR CARE FOR OVER 15 YEARS

STYLING
 COLORING
 PERMANENTS
 NO WAITING
 NO APPOINTMENTS

MON & THUR 9 to 8
 TUES, WED, FRI 9 to 6
 SATURDAY 8 to 5

PLEASING YOU PLEASES US!

GIFT CERTIFICATES FOR ALL OCCASIONS

SENIOR CITIZENS REDUCED RATES MON - TUES - WED

EVA GABOR WIGS

864 KEARNY AVE., KEARNY 991-9800

Come Spend a Week in Bavaria!

The Country's Finest **German Festival**

August 24 - 31st
 (Closed Monday)

Direct from Germany, Action Park proudly presents: MUSIKVEREIN ELLHOFEN, a 40-piece band, plus ISARWINKLER BUAM and many other great performers

- Taste and experience delicious German beer-brewed right at the Park
- Enjoy nonstop entertainment, including a 40-piece German Marching Band
- Mouthwatering German baked goods made fresh at our own Bakery
- Festivities take place in our beautiful, 5,000-seat Fest Haus direct from Munich, Germany
- 50 action-packed rides, 3 live shows, and a host of attractions including 25 water rides, Grand Prix race cars, Gold Cup speed boats, the Tidal Wave Pool and 8 Alpine Slides

SAVE up to \$4 on any Action Park Festival!

Live: Aug. 24-4
 Divuland: Aug. 17
 German: Aug. 24-31 (Closed Mon.)
 Polish: Sept. 1 & 2

Present this coupon at Action Park for a savings of \$2 each (up to 2 Festival admissions). Cannot be combined with any other discount. Offer expires September 30, 1985.

FREE PARKING
 Rain or Shine

Action Park Rte. 94, Vernon, NJ 07462 201/827-2000

SECURITY NATIONAL'S NEW 24 HR. AUTO LOAN 11.75% ANNUAL PERCENTAGE RATE

"NOW THAT'S FAST"

NEW CAR

SECURITY NATIONAL BANK & TRUST COMPANY of NEW JERSEY

FOR MORE INFORMATION CALL THE NUTLEY OFFICES:

Joanne M. Paulson, A.V.P.
 Branch Manager
 213 Harrison Street
 (201) 661-5110

Diane B. Gruber, A.C.
 Branch Manager
 431 Kingsland Street
 (201) 661-5121

MEMBER FDIC
 AN EQUAL OPPORTUNITY LENDER

Belleville Library adds more large print books to its collection

The Belleville Public Library, 221 Washington Ave., has recently added more large type books to its collection.

The books are particularly useful to the visually impaired, senior citizens or those who enjoy the large print format for easier reading. The large type books are available on the first floor of the library. Additional titles are available on the second floor.

Some of the large type books available are:

- "Bitter Alliance," by Kay Thorpe. Lian Caine had a low opinion of Jaime from the first time he had met her, but that didn't prevent Jaime from feeling attracted to him and posing as his fiancé.

- "The Brides of Belmore," by Anne Maybury. Following her parents' death, 19-year-old Elizabeth Belmore finds temporary employment in the countryside before returning to her relatives' townhouse on Manchester Square, where she becomes re-acquainted with her cousin Mark.

- "Cat's Prey," by Dorothy Eden. The story brings Antonia to Auckland, New Zealand, at the invitation of her cousin Simon.
- "Deadeve Dick," by Kurt Vonnegut. Rudy Waltz, a young Ohio man who mistakenly shoots a pregnant woman is faced with a series of untimely events, including the accidental neutron bombing of an entire midwestern city.

- "A Death at St. Anselm's," by Isabelle Holland. When Chuck's business manager is found murdered, suspicion turns to street people.

- "Death's Clenched Fist," by James Sherburne. Tim Kanady, a notorious Tammany Hall politician, shows up again, turning a peaceful Monday rally into bloody mayhem.

- "Death Warmed Up," by Marian Babson. A catering service suffers by association when the death of a director of Quadron International takes place.
- "The Dirty Duck," by Martha Grimes. When Gwendolyn Bracegirde of Sarasota, Fla., is found murdered, jury and his friend, Melrose Plant, are wooed into the investigation.

- "Dillinger," by Harry Patterson. This is a novel of Dillinger, who robbed banks at a time when Americans thought banks were robbing them.

- "Floodgate," by Alistair MacLean. Unless the Hague can meet the demands of the F.F.F., a terrorist group, they'll use nuclear devices.

- "Footprints: An Autobiography," by Brooke Astor's disastrous first marriage, her second husband's death, and her third marriage.
- "A Gentle Occupation," by Dick Bogarde. On the island of Java, a group of ordinary people face hatred and corruption left by the Japanese occupation.

- "Gentleman's Agreement," by Laura Z. Hobson. A journalist's assignment for articles on anti-semitism causes him to pose as a Jew for a few weeks and leads to important discoveries.

- "God's Little Acre," by Erskine Caldwell. Because Ty Walden and his family believe that there is gold on his farm, they dig for 15 years, neglecting all other important duties.

- "The Golden Collar," by Elizabeth Cadell. Henry Elliot, dispatched to Algrave to persuade Senhora Silva to sell some land, becomes intoxicated by the place and Senhora's niece Teresa.

- "Ke and Mamie," by David and Irene Lester. In this biography, the reader shares their glories, failures, success and defeats.

- "The Joy of Living," by Willard Scott. Today Show's weatherman takes time off to have a downtown visit with his television fans.

- "Loving Each Other," by Leo Buscaglia. This is a book about

love, tenderness, compassion, caring, sharing and relating.

- "The Montauk Fault," by Herbert Mitgang. Story introduces a disillusioned editor who enters the shadow world of international intrigue when he agrees to be a go-between for the Russians and Americans to prevent either side from unleashing weapons.

- "The Other David," by Carolyn Coker. On leave from Harvard as guest editor at Galleria dell'Accademia in Florence, Andrea Perkins receives a gift of a painting from a priest causing a story of in-

trigue and love.

- "Some Lie and Some Die," by Ruth Rendell. Chief Inspector Wexford's case gains him entry into the bizarre world of rock singers when a young pair of lovers is discovered at a nearby quarry at a rock festival.

- "The State of Stony Lonesome," by Jessamy West. Events of novel rooted in California.

- "Stones for Ibarra," by Harriet Doerr. Story of a couple embarking on a journey of renewal in the Mexican town Ibarra.
- "Southern Women," by Lois

Battle. The story of the Hamptons of Savannah, Ga.

- "Temper the Wind," by Desiree Meyler. Kate Deacon, frustrated by her husband's refusal to face his dominating father, falls in love with Martin Roberts, the handsome headmaster of her son's school.
- "Yellow Flower Moon," by Jean Hager. Maria, an attorney, doubts the wisdom of her return to Oklahoma to help her feisty grandmother.

To reserve these or any other books, call the library's circulation desk at 759-9200.



Vincent Cozzarelli Reg. Ph.

FOOD AND DRUGS

Certain drugs can increase or retard the absorption of drugs into the bloodstream. For example, the absorption of iron is enhanced if it is taken along with foods that are rich in vitamin C, such as citrus fruits. More commonly, however, food impairs the absorption of drugs. One well-recognized interference comes from antibiotics. If dairy foods are eaten during tetracycline therapy, the calcium in the milk, etc., will impair the absorption of the tetracycline. Other antibiotics, such as penicillin, ampicillin and erythromycin, should not be taken with fruit juices, citrus fruits, tomatoes, vinegar, pickles and cold drinks. If drugs need to be swallowed with liquid, it is safest to drink plain water.

Prescription drugs generally have warnings placed on their labels. If there is a problem with certain foods, should you have a question about your prescription medication talk to your pharmacist at RGS-SMOKER PHARMACY, 338 Washington Ave., 759-1956, 759-1948. We handle the sale and rental of convalescent aids, including walkers, wheel chairs, crutches and canes. Hours: Daily 9am-10pm, Sundays 9am-9pm.

HANDY HINT:

The acidity in soft drinks can cause drugs to dissolve in the stomach rather than the intestine.



POSSIBLE SIGNS OF PINCHED NERVES

- Headaches/dizziness
- Whiplash
- Neck pain/tight muscles
- Shoulder pain
- Pain down the arms
- Numbness in hands
- Low back pain/hip pain
- Sciatica
- Leg pain/numbness

• EMERGENCIES TREATED ANYTIME
• MOST INSURANCE ACCEPTED

FAMILY FEES AVAILABLE
MOST INSURANCE
ACCEPTED

DR. RALPH J. DI MUTO
Chiropractor
825 Joramemon St. Belleville
751-8805

Douglas H. Burg, Attorney
778-6161

- Accident Cases
- Divorces/Custody
- Business Incorporation
- Partnerships

- Bankruptcy
- Wills
- Real Estate Closings
- Social Security Disability

• Business & Personal Collections

Other Matters Handled Promptly and Reasonably
INITIAL CONSULTATION FREE

1051 Bloomfield Ave.
Clifton, N.J.

(Located at the Sylvanite Shopping Center - 2nd floor)

Judge a college by its graduates. SAINT PETER'S COLLEGE The Evening-Weekend Session

Many of you may already know Saint Peter's College, because Saint Peter's has graduates in just about every walk of life. Perhaps your doctor, your dentist, your accountant, or your teacher is a Saint Peter's graduate. Maybe even your attorney, your communications specialist, or your computer programmer might be an alumnus or alumna of the College. The point is that New Jersey's Jesuit College has graduates in virtually every business, scientific, professional, and artistic field you could imagine.

Your Saint Peter's College degree — plus your imagination — will offer you unlimited successes. Let the St. Peter's pros guide your future.

To find out more about our programs, people, and opportunities fill in the coupon and mail it today. Can't wait? Then call us at

(201) 333-4400, Extension 504. Fall Trimester Classes begin September 9, 1985.

BACHELOR'S DEGREES

COLLEGE OF ARTS AND SCIENCES

- Computer Science
- Data Processing
- Mathematical Economics
- Philosophy
- English
- History
- Psychology

SCHOOL OF BUSINESS ADMINISTRATION

- Accountancy
- Economics
- Business Management
- Health Care Management
- Marketing Management

ASSOCIATE'S DEGREES

Public Policy
Banking
Data Processing
Marketing Management

CERTIFICATE PROGRAMS

Computer Programming
Business Systems
Management and/or Marketing
Word Processing



Ms. Coleen J. Gallagher
Director of Evening Admissions
Saint Peter's College
2641 Kennedy Boulevard
Jersey City, New Jersey 07306

Please send me information on the Saint Peter's College Evening-Weekend Session. I understand the Fall Trimester begins September 9, 1985.

Name _____
Address _____
City _____ State _____ Zip _____
Telephone (____) _____

New Jersey's Jesuit College

Saint Peter's College is an Affiliated Action Local Corporation Employer. It does not discriminate on the basis of sex, race, marital status, color, religion, age, national origin, physical handicap, or veteran's status.

New Jersey Earth Science Assn.
13th NATIONAL GEM & MINERAL SHOW
"THE MAGIC OF MINERALS"
AUGUST 17 & 18

LOOK INTO THE WORLD OF
The Collector - dazzling displays of crystals, minerals, fossils, jewelry
The Craftsman - watch gem cutting, bead stringing, silverwork, scrimshaw, gem trees, flint knapping
The Microscope - crystal fantasy
Children's Corner - coal carving, crystal growing, fluorescence, free gifts
Identification - of your minerals or fossils
Museums - Smithsonian Museum of Natural History; American Museum of Natural History; Rutgers Geology Museum; Paterson Museum; Morris Museum of Arts & Sciences; a "miniature museum" from Rhode Island
Speakers - armchair collecting trips round-the-world plus collecting techniques
Your Money's Worth - Walter Greenbaum, gemologist, colored gems & diamond buying workshops
Buyers - nation-wide dealers your own stones gold or silver wire-wrapped

SPECIAL GUESTS & EXHIBIT
World-renowned author, Dr. Peter Bancroft, Fallbrook, Calif.

"GEM & CRYSTAL TREASURES"
20-foot world's largest display of gems & minerals
on stamps plus matching counterparts

5 Guest Appearances by Dr. Steven Magie
Special Door Prizes

WILLIAM PATERSON COLLEGE
REC CENTER 300 Pompton Ave. WAYNE
Sat. 9am-6pm ADULTS \$2.00 CHILDREN 50¢ Sun. 9am-4pm
Free Parking Food Service

Palmer Video Of Bloomfield

★ 1st ANNIVERSARY ★
CELEBRATION

Gold Club Membership Special
\$69.95
Regular \$100.00
Includes:
• 36 Free Rentals
• Wednesday is Penny Day
• Rent 1 Movie and Get Second at 1/2 Price on Mon
• Monthly Bulletin

Silver Club Membership Special
\$34.95
Regular \$60
• Rent 1 Movie and Get Second at 1/2 Price on Thurs
• Monthly Bulletin

ANNIVERSARY DRAWING
Win One of Three Prizes

1st Prize: Norman Rockwell Limited Edition Musical Figurine
2nd Prize: 6 Free Blank Tapes
3rd Prize: 5 Free Rentals
(No Purchase Necessary)

\$1.00 OFF ALL BLANK VIDEO TAPES

SPECIAL FOR CURRENT GOLD AND SILVER MEMBERS
to say thank you for making our first year a success

One Free Rental Any Tuesday or Thursday
During the Month of August • Must Bring This Ad

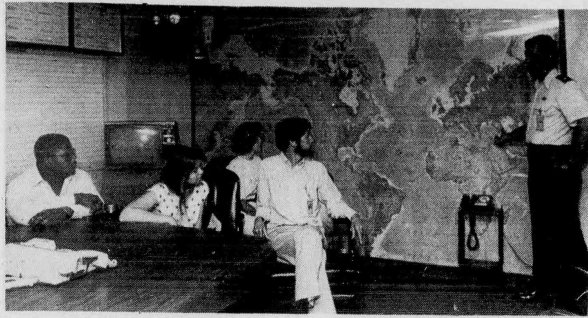
Special Purchase Prices On Selected Movies From Our Large Library

• EXTRA SPECIAL •
LOW PRICES ON ALL VCR
Buy any VCR at our low price and get 1/2 off the regular price of our 1 year or 3 year memberships.

Palmer Video
71 Belleville Avenue
Bloomfield, N.J. 07003
Phone: (201) 429-1120

Store Hours:
Mon-Thurs. 11 am-8 pm
Fri. & Sat. 11 am-8 pm
Sunday 12 noon-5 pm

Hartmann gets briefing and visit from Kean at scholars' school



Governor's Scholars - As part of their course on Conflict Resolution, students attending the Governor's School at Monmouth College recently visited McGuire Air Force Base, home of the 21st Air Force which is one of two globally based air forces of the Air Lift Command. Pictured receiving a briefing on the nature and scale of air force airlift operations in the command center from Lt. Col. Dennis Doyle, right, chief of operations, are: (l-r) Scott Murray of Cherry Hill; Susan Dvovakin, Fort Lee; Claudia Hartmann of Belleville; and John Raby of New Providence, course instructor.



Governor's Visit - During a recent visit to the Governor's School at Monmouth College, Gov. Thomas Kean asked his scholars to consider seriously the value of public service. Pictured speaking with Gov. Kean before his address are: (l-r) Claudia Hartman of Belleville; Jill Johnson and Renetta Garrison of Plainfield; and Dominique Petrillo of North Bergen. The Governor's School at Monmouth College is a month-long, tuition-free, residential program for 100 high school scholars selected competitively from all 21 counties in the state to study public issues and the future of New Jersey.

DENTALLY SPEAKING

By Drs. James D. Muglia and Paul N. De Maio

Mrs. D. of Clifton asks: "My 7-year-old daughter's teeth are very crowded. Will her permanent teeth be crowded also?"

There's a very good chance, Mrs. D. that her permanent teeth will be crowded, due to lack of space. At about 7, there usually is a growth spurt which could alleviate moderate crowding. But if, as you say the teeth are very crowded, we feel she may need some help now.

There are measurements that the orthodontist and/or dentist uses to disclose the amount of jaw space needed. If there is not enough, then either a removable or fixed appliance can be constructed to measure the jaw space and alleviate the crowding. We feel it's best to get a diagnosis now, so if treatment is needed it may begin and possibly prevent the removal of permanent teeth later.

Please consult either your dentist or an orthodontist for their help. Thank you.

Send Inquires To:
Dentally Speaking
671 Franklin Avenue
Nutley, N.J. 07110
667-4421



CHIRO NEWS

THE SERIOUSNESS OF ACCIDENTS

Accidents often result in serious illness. They need not be severe to be followed by dire results. Sometimes slight falls or jars, which at the time are passed unnoticed, are responsible for nerve entrapment, the effects of which are serious. This is an important thing to remember in this day when all kinds of accidents are so common.

If in an accident one or more of the segments of the spinal column are misaligned sufficiently to produce pressure on nerve trunks, the tissues of organs supplied by these nerve trunks cannot function normally. If this misalignment is not corrected, it means a slow process of degeneration of disease begins. Many times symptoms of injuries appear months or even years after an accident. It may take years for degeneration of discs or post-traumatic arthritis to develop in the spine. That is why anyone involved in an accident or injury should get his spine examined by a chiropractor to determine if misalignment exists.

The nerves that were damaged may also supply the digestive tract; the kidneys; the heart or other vital organs. So long as nerve pressure persists, disease will gradually develop. That is why the precaution of seeing a chiropractor is vital to your future health. If you have ever had an injury and don't know why you are feeling bad, get your spine checked today.

Harry Maroulakos Chiropractor
255 Centre St., Nutley, N.J. 07110
235-1365

You've heard us on WCBs and WINS Radio

5 minutes via Rte. 21 Belleville Nutley

YOU can get the great deals on **HONDA PONTIAC or VOLVO**

that have brought hundreds of people from ALL OVER the Tri-State area

City Motors
River Drive, at Rte. 21, Passaic Park
777-1600

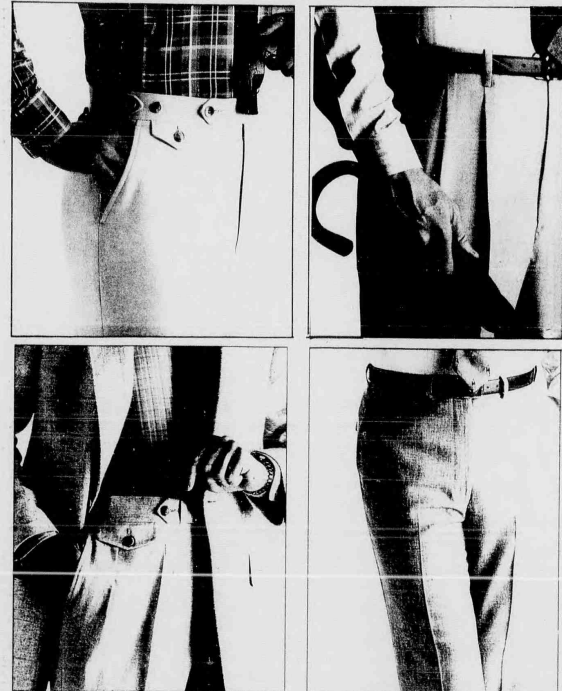
FINAL INVENTORY CLEARANCE SALE ON ALL CASUAL AND DRESS PANTS

Tropical and Year-Round Weights, Cottons, Wools and Blends in Plain and Pleated Models

25% to 50% OFF

Reg. '37⁹⁹ to '75⁰⁰, NOW '18⁹⁹ to '37⁵⁰

JAYMAR RUBY • SANSABELT • CORBIN • DAKS • CHRISTIAN DIOR and JAYSPOUT



Similar Savings also on Suits, Sportcoats Sportswear and Swimwear

JNC the men's store
Nutley Center, Nutley 667-9200

JNC and MAJOR CHARGES
HOURS
Open Daily 10 - 5:45 • Until 9:00 on Monday & Friday, Saturday until 5:30
PARKING PLAZA IN REAR OF STORE

THE LOWEST RATE AROUND

Borrow from us and pay only **3 1/4%** over Prime*

No application fee. No annual fee. No monthly maintenance charge. Once your credit is established you can use it *anytime you want* for anything you want. Repayment is 1/180th of principal plus interest or \$100, plus interest monthly (whichever is larger). To qualify you must be a New Jersey home owner. When your line of credit is approved there is a one time origination charge of \$125. Prime Rate is adjusted on the 6th of each month as published in The Wall Street Journal.

*On August 6, 1985, Prime Rate was 9 1/2%.

SOME OTHER BANKS OFFER WHAT SEEMS TO BE A TERRIFIC RATE. BUT WHEN YOU READ THE SMALLER PRINT CAREFULLY, IT SAYS THE RATE ONLY APPLIES FOR A FEW MONTHS. THEN JUMPS WAY UP. A LOT HIGHER THAN BNB'S REALLY LOW RATE.

NOW'S THE TIME TO GET AROUND TO IT

CALL ANN FITZPATRICK

624-2400

OR SEND COUPON

BTB15

ANN FITZPATRICK
BROAD NATIONAL BANK
905 BROAD ST., NEWARK, NJ 07102

HI ANN, PLEASE SEND

☐ MORE INFORMATION

☐ FORMS TO ESTABLISH MY OWN EQUITY CREDIT LINE OF \$5000 TO \$50,000

MY NAME _____

ADDRESS (Inc. Zip) _____

BNB
BROAD NATIONAL BANK
Newark • East Orange • Millburn • North Arlington

Equal Housing Lender • Member FDIC



You can still prove to yourself how low Grand Union regular prices are.

Over a year ago Grand Union reduced their regular prices to match the lowest leading supermarket in your community. Every week since then we printed our regular prices in the Price Finder so you could check on them.

Prove it to yourself with the Price Finder; check all the specials in the Price Finder for Specials. Only at Grand Union.

Grand Union Consumer Price Finder

Grand Union is matching the lowest priced supermarket chain in your community. Contains over 9,000 regular prices for your shopping comparison.

Grand Union Price Finder Specials

Find the Specials in the Store. See Red Dots on Shelf.

This booklet does not include deeply cut Grand Union Red Dot specials, which are even lower than the regular prices in this booklet. We prices should not be compared with limited specials of other supermarkets.

These Specials are just samples of the hundreds in the Price Finder for Specials!

Fresh - 3-Lb. Roll
Ground Beef
119
Ea. Lb.

Chilled - Regular or Country Style
Minute Maid Orange Juice
159
Half Gal. Cont.

Super GRAND UNION Coupon
Mt. Dew, Pepsi Light or Reg. or Diet Pepsi-Free or
Pepsi-Cola 6-Pack
159
One 6-Pack of 12-oz. Cans
No Minimum Purchase Required With This Coupon.
Good Aug. 11 Thru Aug. 17. Limit One Coupon Per Customer.

Grade 'A' Fresh - Roasting Chicken
Perdue Oven Stuffer
77¢
5 to 6-Lbs. Lb.

Chocolate Sandwich
Nabisco Oreo Cremes
199
1-Lb. 4-oz. Pkg.

Super GRAND UNION Coupon
Buy One Get One FREE
Get One 6-oz. Cont. - Assorted Flavors
La Yogurt Yogurt
When you buy one 6-oz. Cont.
La Yogurt Yogurt at our regular low price.
No Minimum Purchase Required With This Coupon.
Good Aug. 11 Thru Aug. 17. Limit One Coupon Per Customer.

Assorted Flavors
Hi-C Fruit Drink
69¢
1-Qt. 14-oz. Can

Locally Grown - Tender White, Bicolor or
Sweet Yellow Corn
899¢
Ears

Super GRAND UNION Coupon
Pre-Sweetened Mix
Lipton Iced Tea
399
One 4-Lb. Cont.
No Minimum Purchase Required With This Coupon.
Good Aug. 11 Thru Aug. 17. Limit One Coupon Per Customer.

THE BUTCHER BLOCK

PRODUCE

GROCERIES

U.S.D.A. Choice - Boneless Beef
Top Round for London Broil
Also: Sirloin Tip (Round) or Shoulder Lb.
197

Grade 'A'
Shady Brook Turkey Wings
Lb.
79¢

California - Luscious Large Size
Sweet Red Plums
Lb.
49¢

2-Ply Facial Tissues (175) or
Grand Union Paper Towels
2 120 Sheet Rolls
99¢

New - Regular, Elect. Perk or ADC
Maxwell House FreshLock Coffee
1-Lb. Can
219

Top Round Steak 229¢
U.S.D.A. Choice - Boneless Beef Lb.
Round Cubed 249¢
U.S.D.A. Choice - Boneless Beef Steak Lb.
Ground Round 189¢
Freshly Ground Beef Lb.
Shoulder for Stew 229¢
U.S.D.A. Choice - Boneless Beef Lb.
Drumsticks Perdue 79¢
Grade 'A' Fresh - Oven Stuffer Chicken Lb.

Boneless Thighs 169¢
Perdue - Grade 'A' Fresh Oven Stuffer Chicken Lb.
Cornish Hens 129¢
Perdue - Grade 'A' Fresh Lb.
Turkey Drumsticks 69¢
Perdue - Grade 'A' Fresh Lb.
WHOLESALE SAVINGS
Tenderloin 399¢
U.S.D.A. Choice - Boneless Beef 5 to 7 Lb. Lb.
Unimpaired Cry O-Water Custom Cut

Nectarines 59¢
California - Sweet Luscious Large Size Lb.
Plum Tomatoes 59¢
New Jersey Fresh Lb.
Oranges 10 For 159¢
California - Sweet Eating Valencia 1 1/2 Size
Green Beans 49¢
New Jersey Fresh Lb.
Black Plums 69¢
Jumbo Fruit Lb.

Pfeiffer Natural Bleaching 2 For 100¢
Assorted Varieties Except Blue Cheese 8-oz. Btl.
Shasta Soda 6 For 100¢
Diet, Assort. Flavors 12-oz. Cans Plus Deposit
Peanut Butter 89¢
Grand Union - Creamy or Crunchy 6-oz. Jar
Maxwell House 369¢
Regular Instant Coffee 8-oz. Jar
Cheetos Frito Lay 99¢
Puffed Balls or Crunchy 8-oz. Pkg.

Planter's Fresh 79¢
or Corn Chips 17.5-oz. or Cheese Balls 15-oz. 2.5-oz. Cont.
Solo Detergent 319¢
For Laundry with Fabric Softener Half Gal. Cont.
Trident Gum 89¢
Assorted Sugarfree Flavors 6-Pack
Purina 100 4 For 100¢
Assorted Varieties 100 (at Fresh) 4 For 100¢
Comet Cleanser 3 For 100¢
For Scouring 14-oz. Cans

THE CORNER DELI
IN STORES WITH SERVICE DELI
Pastrami 129¢
*Hot or Cold - Sliced to Fit the Price Half Lb.
Imported Ham 299¢
Deli Sliced - Celebrity Cooked Water Added Lb.
Cole Slaw 67¢
Wishbone or Newman's Own Mayonnaise Lb.

THE BIG FREEZER
Green Beans 2 For 79¢
Grand Union - French Style or Cut 9-oz. Pkg.
Tree Tavern 99¢
Cheese Pizza - Snack Size 10-oz. Pkg.
Hash Browns Heinz 129¢
with Butter and Onions 1 Lb. 8-oz. Pkg.

Fettuccini Alfredo 119¢
Kinzoni 8-oz. Pkg.
Chicken 2 For 89¢
Morton's 10-oz. Pkg.
Pudding Bars 199¢
Pkg. of 10 Assorted Flavors

DATE-LINE DAIRY
Sour Cream 99¢
Sealed 1-Lb. Cont.
Lemonade 89¢
Minute Maid 8-oz. Jar
Regular or Pink or Fruit Punch Half Gal. Cont.
Cottage Cheese 169¢
Breakstone's - Assorted Curds 1-Lb. 8-oz. Cont.

HEALTH & BEAUTY
Aqua-fresh Toothpaste 119¢
Tube or Pump with Fluoride 4.5-oz. Pkg.
After Shave 299¢
Original 4.25-oz. Btl.
Visine Eye Drops 169¢
Get The Red Out 1-oz. Pkg.

NATURAL BEEF!
It's now available at Grand Union. And it's USDA Choice. Look for the Natural Beef Label. It tells the story.

GRAND UNION Coupon
60¢ Off
With This Coupon And Purchase Of One Half Gal. Cont. - Heavy Duty Liquid
Wisk Laundry Detergent
Coupon Good Aug. 11 Thru Aug. 17. Limit One Coupon Per Customer.

GRAND UNION Coupon
40¢ Off
With This Coupon And Purchase Of One Conven. Pack - Toddler or Newborn (60), Daytime (48)
Kleenex Huggies Diapers
Coupon Good Aug. 11 Thru Aug. 17. Limit One Coupon Per Customer.

GRAND UNION Coupon
40¢ Off
With This Coupon And Purchase Of One 4-Lb. 1-oz. Pkg. - For Automatic Dishwashers
Sunlight Lemon Detergent
Coupon Good Aug. 11 Thru Aug. 17. Limit One Coupon Per Customer.

TOLL-FREE
STORE INFORMATION
1-800-221-1835

GRAND UNION

MOST STORES ARE
OPEN 24 HOURS
Check your local Grand Union for store hours.

Prices effective Sunday, Aug. 11 thru Saturday, Aug. 17 at all Grand Union stores in New Jersey, Rockland and Orange Counties. In order to assure a sufficient quantity of sales items for all our customers, we reserve the right to limit sales to 3 packages of any item unless otherwise noted. Not responsible for typographical errors. For store information call toll free, 1-800-221-1835.

Belleville Times SPORTS

Buc Shots

By Mike Lambert

Caruso talks of her trip to Australia

It was back in the spring of 1979 that a sophomore from Belleville High School began to catch the coaches eye with her impressive running and tremendous work ethic.

By her senior year, 1981, the name Dana Caruso became synonymous with success. She had risen from a skinny, often ill, freshman to a powerfully built runner in her senior year. She was admired by teammate and foe for her tremendous enthusiasm and never say die attitude. She set school records in the half mile, mile and two mile events. Her record on the Belleville cross country course figures to stand for many years to come.

After graduation, Caruso took her running and academic skills to Montclair State College. She took part in the cross country, indoor and outdoor campaigns. Dana maintained a grade point ratio of 3.35, majoring in health care and social services.

When not running, Caruso would dedicate her time to the Essex County Geriatric Center, spending time with the patients and developing a keen interest in the field of gerontology.

This past semester, Caruso opted for an exchange program, traveling to Australia to finish her undergraduate work. It's a trip that the young lady will never forget.

"It was fantastic," Caruso said earlier this week. "I did a lot of traveling, visited a lot of people and learned a great deal. It was something that I'm glad I had the chance to do, but on the other hand, I'm glad to be home."

Dana's travels did not include just Australia. Not by a long shot. It all started on January 30, 1985 when she boarded a jet and departed for Los Angeles. From there, it was another flight to Honolulu, completing the first stage of a 12,000 mile journey.

"I traveled for three weeks before school started," explained Caruso, "and then there was 3 1/2 months of school. I stayed in Australia for six weeks after school, traveled for another week, then came home."

After spending four days in sunny Hawaii, the next stop was Fiji, located in the South Pacific. Fiji is located just beyond New Zealand. There was a five day stay on the Fiji Islands.

From there, the flight continued to New Zealand, where a 12 day hiatus included eight days on the southern end of New Zealand with another four on the northern end.

From New Zealand, the journey finally ended with the trip to beautiful Sydney, Australia. It was in Australia that Dana would spend the next four months, attending classes at the University of Wollongong, located 90 minutes outside of Sydney.

Caruso found the classes small and intimate at Wollongong.

"The classes were very interesting," she said, "because there weren't many people in the classes and everyone got a lot more attention."

Since Dana needed only to take electives to complete her undergraduate studies, the curriculum consisted of Australian Studies, Psychology, Modern Media and Dance.

"The instructors showed us a certain amount of travel time as well," she said. "They realized that we were here to visit the country and allowed us some time during the semester to do that."

With the end of the semester in early June, Caruso continued her stay in Australia by working on a farm outside of Griffith for six weeks.

"It was a big country town," Dana said of Griffith. "I stayed in a refuge and got a chance to work with the kids. I became quite interested in working with youth and now, I'm not sure if I want to work in geriatrics or youth. It will take some time to decide."

After staying with friends in Wollongong, it was time to make the long haul back to the U.S.A. She flew from Australia to Tahiti, staying in Tahiti for a couple of days. From there, it was off to Moorea, an island just off Tahiti and then, a direct flight to Los Angeles.

The memorable trip concluded two weeks ago with a happy return home to beautiful downtown Belleville.

"It was great to be away and to have traveled the way I did," Dana said. "But, the best thing is to be home. I really can appreciate all the great things we have in this country even more. In Australia, the younger athletes don't get a chance to be coached like we are. A lot of the athletes have to coach themselves. It really made me appreciate all we have here."

While she didn't run too much in Australia, Dana took up volleyball and made the trip with two other students from Montclair State. She speaks very highly of the Australian people.

"They couldn't have been nicer, they spoiled us from the first day we arrived. They took us in and made us feel welcomed. It was just a great experience."

And so now, Caruso will join the rest of the working world by preparing a resume and starting life on the nine to five basis. However, she certainly will not forget her high school and college days, capped off with an unforgettable trip to the South Pacific.

Lets Go Mets

As the baseball season continues following a mini strike last week, the New York Mets continued their roll toward the N.L. East crown. About the only team capable of catching them down the stretch is St. Louis. The Cards have the quality pitching (they're second in the National League in pitch pitching) and lead the league in hitting. They've also beaten the Mets 8 of the 12 games the two teams have played. Also, credit the Red Birds with the Mets using success. Keith Hernandez and Rafael Santana, the first baseman and shortstop respectively, are ex Cardinals that played on the '82 championship team in St. Louis.

Team misses last six games because of forfeits

Braves' high expectations for good season turn sour because of injuries and bad luck

Following a very successful season in 1984, there were big things expected from the Belleville Braves for the '85 campaign.

Unfortunately, injuries, work schedules and bad luck took the place of expectations and the Braves finished the Essex County Baseball league season with a 5-29 mark, missing the last six games of the season because the team forfeited two games and was expelled from the league.

"I wasn't ready for this," acting head coach Anthony Coco said last week. "This season wasn't really the best time to get coaching experience. I learned a lot, though. Since we didn't have the same lineup too often, it was a challenge to pick a starting lineup. I'll say this much, it isn't easy to go from player to coach on the same team."

When the campaign commenced in May, the Braves were quite optimistic. The team had finished with a 21-18-1 record in 1984, making the playoffs and bowing to Verona in the semi finals.

Sal Garilli, who was the teams head coach in 1983 and '84, found his work schedule a little too demanding for 1985 and turned the reins over to Coco for most of the 1985 season.

"Anthony is doing a good job," Garilli had said during the season. "He isn't in a very good position because of the injuries and work schedules."

Key members of the 1984

team players like Joe Corbalis, Scott Weber, Dom Vazzano, Bill Feehan and Steve Karlick could not play for the Braves this year because of various reasons. Corbalis was trying to come back after knee surgery, but he wasn't 100 percent and played sparingly during the year.

Weber led the league in homers last season, but his work schedule conflicted with the team and he was forced to miss practically the entire season. Ditto for the other members of the group, as work schedules conflicted with playing for the team.

The players who did wear the Brave uniform this summer did so very well, despite the sub-par

mark. The Braves, quite often, had just enough players to field a team for a respective game.

Twice this season, Belleville failed to come up with the nine players needed and the team was consequently ejected from the ECBL.

Coco, who would like to get into coaching eventually, noted the team lost a number of tight ball games.

"We lost four games to the Union Jays (the team with the best record in the league), each by one run. There were a lot of one and two run games this year. We just missed a number of wins."

On the offense, Mike Cavaluzzi led the way, leading the team

in at bats with 97. He hit .265 and also did a fine job on the pitching mound.

The leading hitter on the team was Scott Wohlrab, a three year veteran of the Braves who hit for a .325 pace. Wohlrab shared his time in the Atlantic Coast Baseball League (ACBL) and the Braves.

Mike Caliendo came on strong in the second half of the year and finished with a .345 average. Caliendo also was strong on the mound, hurling some good ball games in relief.

Belleville received a good performance from Mark Grillo, the Nutley resident, who hit .285 and led the team with three homers and 12 runs batted in. Mark Roll, a three year veteran, batted .250 and played a solid defense.

Coco, normally a pitcher, was thrust into fielding duty this summer. At the plate, he hit an impressive .290. Dan Gardner, a fine utility player, hit .220 for the season. Gardner is a three year man with the Braves and always gives a solid performance.

Ed Grzybowski came around to post some very impressive numbers. At the plate, he hit .327, tying Wohlrab for the team lead in average. Grzybowski, an all purpose player, was also strong on the mound, winning three games.

Tim Duvan hit .470 in 30 at bats. Duvan, like Wohlrab and Coco, also played in the ACBL.

(Continued on page 12)



Running the Distance - Michael Senesky, center, takes the lead in one of the 10 races sponsored by the Belleville Recreation Department in its annual decathlon this past Monday. - Photo by Michelle Jeannotte.

Belleville Boys' Basketball team defeated powerful Columbia to enter semi-finals

It was only a summer game and the regular season isn't set to start for another three months, but the Belleville boys' basketball team played the game last week in the Elizabeth Summer League that could have lasting effects on the future of the young team.

The Bucs concluded its season in the semi finals of the league last week. Next week, the Times will wrap up the Bucs summer in Elizabeth.

Belleville began the playoffs in the Elizabeth league by battling powerful Columbia at the Thomas Dunn Arena. Earlier this year, the Bucs had lost to the Cougars by some 20 points and Columbia was considered an outside shot to win the entire championship based on its third place regular season record.

Columbia also featured a solid front line, with the three big men averaging in the 6'

range. Early exit for Belleville, right? Wrong.

Belleville pulled the upset of the summer, defeating Columbia, 34-30 and advancing to the semi final round of the league playoffs. Considering that Belleville was in the "final four" with teams like Weequahic, Elizabeth and Don Bosco Tech, Don Roll's club certainly was sitting pretty.

"We slowed the ball down against Columbia," Roll, the head coach said. "We worked with a 1-2-2 zone and went to a 1-3-1 after a basket. We forced turnovers and pressured their guards. Our rebounding was also strong. We controlled the tempo, we made them play right into our hands."

The Bucs took a 12-5 lead after one quarter and extended the margin to 22-13 at intermission. Columbia applied some strong defense in the second

half, holding Belleville to just 12 points, but the Buccaneer defense rose to the occasion, limiting the Cougar offense to just 17 second half points. The result was a four point Buccaneer victory.

Bob Hutchinson scored 14 points to lead the Buccaneer attack. Ted Soshacki finished with eight, Loung La had five, Leon Puentes finished with four points and 12 assists while Don Washington closed with three.

Belleville's season ended in the semi finals of the league by losing to Don Bosco Tech, 47-28. It was a game in which Belleville missed a number of easy layups.

"It was there for us," Roll said. "You can't win games when you miss 12 layups. There is no way you can win. We had a number of opportunities to cut the deficit, but we didn't take advantage."

Despite the setback, Belleville came a long way as the summer progressed. The team did not win a game in its first seven tries, but rallied to win three times in the last two six tries. Earning a semi final bid in the Elizabeth league has to help the teams confidence when the real thing begins the Friday after Thanksgiving.

NOTES: Roll was happy with his teams progress, but warned, "we have to continue to work. The potential is there, but it's not going to come easy. The victory over Columbia showed that we can win games against the good clubs, but this is only the beginning." Weequahic won the league, followed by Don Bosco Tech, Columbia, Elizabeth, East Orange, Belleville and St. Pat's of Elizabeth. Weequahic drew a bye in the first round and played

(Continued on page 12)



Close Race - Jaime Zigarelli, left, and Denise Wujciak run neck and neck in one of the races sponsored by the Belleville Recreation Department in its annual decathlon. Zigarelli gave a last minute push and was the winner. - Photo by Michelle Jeannotte.

Blind athlete succeeds in national competitions

Richard Ruffalo of Belleville continues to excel for the Blind Athletes of America, winning two gold and one silver medal at the National championships at Montclair State College last month.

Ruffalo, a teacher at Belleville High School and former track coach at BHS, will now travel to the Canadian Nationals in Sioux St. Marie, Ontario for the week of August 17-25.

"I'm psyched for the Canadian's," Ruffalo said last week. "This was an honor to be selected to those games. Only 15 blind athletes in track and field were selected from the nationals and I was the only thrower selected. It was a nice surprise."

Ruffalo has excelled in blind athletics for three years now. Last year, he competed in the Nationals in St. Louis, winning

one gold medal and two silvers. The gold came in the javelin while the silvers were accomplished in the shot put and discus.

A month later, Ruffalo competed in the heaped International Games for the Disabled in Long Island. Those games were attended by no less than President Ronald Reagan, who spoke at the opening ceremonies.

This year, Ruffalo won two gold medals, in the shot put and discus, while taking a silver in the shot put.

Ruffalo currently owns the world javelin record and is looking to break the shot and discus marks.

"I don't think that anyone has ever set the record in all three events," Ruffalo said. "That's something that I'd love to do."

(Continued on page 12)

Braves' season hopes plagued by injuries

(Continued from page 11)

It wasn't the best of seasons for the Belleville Braves, but the team did give it their best shot all summer long. Hopefully, the teams luck will change for the better next summer.

NOTES: The Braves hit .260 as a team this summer. When reminded that a .260 team average would be good for second place in the National League right now, Coco a die hard Met fan replied, "We would move down in the standings in a few more weeks because the Mets will be moving up. Hey, they're hitting .253 as a team now after batting .218 six weeks ago. Continuing his sense of humor, Coco said, "Dwight Gooden is so good, he could pitch for us (the Braves) right now."

The ECBL playoffs begin this week. Coco would like to see Parsippany win the crown this summer. The Union Rams, who set a league record for victories, and the N.J. Cubans are also favorites to take the title.

Ruffalo hopes to break records in Canadian event

(Continued from page 11)

The Canadian Nationals will be a big step for Ruffalo. In addition to wearing the colors of the United States, which is always a thrill, Ruffalo will look to break a few more records.

Next for the Belleville resident is the Pan Am Games in 1986.

"I don't know where they will

be," Ruffalo said of the Pan Am Games, "but that would be an accomplishment."

Ruffalo found about his selection to the Canadian Nationals on July 8. During his eight days of competition in Canada, he hopes to get some more good news by possibly winning a medal.



Slow Pace - These three guys are taking it slow as they jog a few laps around the track at Municipal Stadium this past Monday. - Photo by Michelle Jeannotte.

Rec Department seeks coaches for 7-13-year-old soccer league

The Belleville Recreation Department is seeking persons interested in coaching in its 7-13 year-old soccer league.

The league is separated into several divisions according to specific age groups.

The children learn the basics of soccer and all those attending regular practices play in all games. Games are played on Saturday and Sunday afternoons,

beginning in early October.

Those interested in coaching may call the Recreation Department at 450-3422 or contact Bob Travers, league director, at 759-6781.

Big win puts team in playoff

(Continued from page 11)

Elizabeth in the semi finals. Don Bosco defeated St. Pat's in the first round and Belleville in the semi's. Elizabeth upended East Orange and plays Weequahic. The winner of that game battles Don Bosco Tech for the championship.

Rec Dept. looking for football coaches

The Belleville Recreation Department is presently taking names of adult Belleville males interested in volunteering their time to coach in the Recreation Touch Football program for boys, ages 8-12.

The league will provide instruction to the children as to the fundamentals of football, while eliminating heavy body contact.

Games are scheduled on Saturday mornings at the Little League Field, beginning Sept. 28.

Due to the expansion of the league in 1985, more coaches are needed and the league may possible be broken down into two divisions.

The children learn the basics of football and all those attending regular practices will play in all games.

Those interested in coaching may call the Recreation Department at 450-3442.

Rec forms cheerleading squad

The Belleville Recreation Department is forming a travelling cheerleading squad for girls attending the 4th through 6th grade.

If interested, please report to the Belleville High School parking lot Thursday, Aug. 15, 3:30 p.m.

For further information call 450-3422.

PURA - TEX

HOME IMPROVEMENTS CORP.

★ Siding

★ Roofing

★ Doors

★ Windows

Est. 1961

Andersen Windows

AW

SHOWROOM

191 Belleville Ave., BELLEVILLE

PROFESSIONALS

NATIONAL ASSOCIATION OF THE REMODELING INDUSTRY

759-2200

ARLINGTON JEWELERS

Presents Its

DIAMOND & GOLD SPRING EXTRAVAGANZA!

BUY NOW For Anniversary, Commemorations, Christmas, Confirmations, Weddings, Graduations and all gift giving occasions

SAVE UP TO 50% ON OUR 14K GOLD & DIAMOND

ALL ITEMS ARE 14K GOLD - QUANTITIES LIMITED. PRICES SUBJECT TO CHANGE DUE TO FLUCTUATING GOLD MARKET NOT RESPONSIBLE FOR TYPOGRAPHICAL ERRORS.

SPECIAL SALE ITEMS	REG.	NOW
7" S Chain Bracelet	\$16.00	\$7.99
16" S Chain Necklace	\$4.00	\$16.99
18" S Chain Necklace	\$8.00	\$18.99
24" S Chain Necklace	\$40.00	\$23.99
16" Special Pendant Chain	\$4.00	\$6.99
18" Special Pendant Chain	\$8.00	\$18.99
7" Rope Bracelet	\$2.00	\$0.00
16" Rope Necklace	\$2.00	\$2.00
18" Rope Necklace	\$4.00	\$7.99
20" Rope Necklace	\$6.00	\$0.00
24" Rope Necklace	\$18.00	\$10.99
Diamond Heart Initial Pendant	\$5.00	\$4.00
Ladies Diamond Initial Bracelet	\$20.00	\$60.00
Ladies Diamond Initial Rings (5 styles from sm. to jumbo)	\$100-\$420	\$50-\$225
Diamond Stud Earrings - c.t. 1 W	\$25.00	\$20.00
Diamond Stud Earrings - c.t. 1 W	\$40.00	\$27.50
Diamond Stud Earrings - c.t. 1 W	\$70.00	\$42.00
Custom Made Name Necklace (chain inc.)	\$150.00	\$80.00
Mothers Ring	\$150.00	\$99.00
Mini Crucifix Ring	\$4.00	\$2.50
Ladies Crucifix Ring	\$5.00	\$2.50
Gents Crucifix Ring	\$8.00	\$2.50
Small Diamond Cut Initial Ring	\$8.00	\$2.50
Fingert Initial Ring	\$5.00	\$3.50
Large Ladies Initial Ring	\$15.00	\$7.50
Diamond Name Necklace with chain (handmade)	\$75.00	\$45.00
Diamond Name Bracelet with double Solid Rope Chains	\$25.00	\$50.00
Class of 85 Charm	\$3.00	\$2.00
Graduation Cap & 85 Charm	\$2.00	\$1.00
First Communion Charm	\$8.00	\$2.00

Get A FREE 14K Gold Jewelry Gift

With Any \$50 Purchase

ARLINGTON JEWELERS

36 RIDGE RD. NO. ARLINGTON

261 FRANKLIN AVE. NUTLEY

WITH THIS COUPON

Expires August 17, 1985

FREE GOLD

Get A FREE 14K Gold Jewelry Gift

With Any \$50 Purchase

ARLINGTON JEWELERS

36 RIDGE RD. NO. ARLINGTON

261 FRANKLIN AVE. NUTLEY

WITH THIS COUPON

Expires August 17, 1985

Trivia Fans

I BET YOU DIDN'T KNOW

Brought to you by Bigelow Motors Chrysler Plymouth

Tom Izzo

Questions:

1. What vegetable yields the most pounds of produce per acre?
2. What mountain erupted to destroy Pompeii?
3. What car was named for the founder of Detroit?
4. What are the three usual flavors of Neapolitan ice cream?
5. What radio, TV and movie character did Jackie Gleason and William Bendix play?
6. What inside corn makes it pop?
7. What TV series did Ronald Reagan, Dale Robertson and Robert Taylor all host?
8. What playwright's works include The Collection and The Caretaker?
9. What is the largest web-footed bird?
10. What is Henry Kissinger's favorite board game?

Answers:

1. The cabbage
2. Mount Vesuvius
3. The Cadillac
4. Chevrolet A. Hild
5. Vanilla
6. Water
7. Death Valley Days
8. The Dick Van Dyke Show
9. The Who
10. Diplomacy

SHERIFF'S SALE

SUPERIOR COURT OF NEW JERSEY CHANCERY DIVISION, ESSEX COUNTY, DOCKET NO. F-34485 PENN FEDERAL SAVINGS BANK, PLAINTIFF vs. JUAN CAAMANO AND BLANCA CAAMANO, HIS WIFE, ET AL. DEFENDANTS Execution For Sale of Mortgaged Premises

By virtue of the above stated writ of Execution, to me directed, I shall expose for sale by Public Auction, in Sheriff's Office, Essex County Courts Building in Newark, on Tuesday, the 20th day of August next, at one-thirty P.M., (prevailing time) all that tract or parcel of land, situate, lying and being in the City of Newark, County of Essex and State of New Jersey, at a point therein distant 215.18 feet Southerly from the Southeastly corner of the same and DeLavan Avenue, thence

(1) running Easterly at right angles to Summer Avenue 100 feet, thence

(2) Southerly parallel with Summer Avenue 30 feet, thence

(3) Westerly at right angles to Summer Avenue 100 feet Easterly line of same, and thence

(4) Northerly along the Easterly line of Summer Avenue 30 feet to the point and place of BEGINNING

BEING also known as Block 680 Lot 62 on the current City of Newark Tax Maps. BEING commonly known as 543 Summer Avenue, Newark, New Jersey. THE above description is drawn in accordance with a survey made by Keelen & Pica, Licensed Land Surveyors dated October 17, 1977. BEING the same premises conveyed to the said mortgagors by deed bearing even date and to be recorded simultaneously herewith, the principal of this mortgage having been used in part payment of the purchase price, this being, therefore, a purchase-money mortgage.

The approximate amount of the Judgment to be satisfied by said sale is the sum of TWENTY TWO THOUSAND TWO HUNDRED SEVENTEEN DOLLARS and FIFTY TWO CENTS (\$22,217.52), together with the costs of the sale.

The Sheriff reserves the right to adjourn the sale from time to time as provided by Law.

Newark, N.J. July 15, 1985
THOMAS D'ALESSIO, SHERIFF
Adams, Adubato & McCarron, Attorneys
The Belleville Times
July 25,
Aug. 1, 8, 15, 1985
See File 414 68

No. 885-778

DUNLOP

The World's Tire

Dunlop Generation IV +

40,000 limited mileage warranty.* For front and rear-wheel-drive vehicles. All-season performance. MIS designation (mud and snow). Advanced tread compound and tie bar construction for added tread life. *Two steel belts for road-hugging ride. Continuous center rib, wraparound shoulder tread design for steering precision, and cornering control.

ONLY \$4900 P155/80R13

SIZE	PRICE	SIZE	PRICE
P165/80R13	\$52.00	P215/75R14	\$67.00
P175/80R13	\$53.00	P205/75R15	65.00
P185/80R13	55.00	P215/75R15	67.00
P185/75R14	58.00	P225/75R15	71.00
P195/75R14	61.00	P235/75R15	73.00
P205/75R14	64.00		

*Ask dealer for details

BRADLEY TIRE SERVICE

NEW & USED TIRES

Alignment, Balancing, & Vulcanizing Service For Complete Radial Tire Service CALL 759-4469

523 Washington Ave., Belleville, N.J.

Grand Opening

312 Washington Avenue, Belleville

across from Muscara Music

CALL 450-0336 for information/Janice Huber "tanning specialist"

- HAVE A DEEP SUMMER TAN ALL YEAR LONG
- DON'T BURN ON VACATION - HAVE A TAN BEFORE YOU LEAVE
- TAN QUICKLY IN TOTAL COMFORT IN WOLFF SUNTAN BEDS
- SAFETY TESTED

Total Eclipse

TANNING SALON

GRAND OPENING SPECIAL

5 VISITS FOR \$15. SAVE ONLY \$10

WITH THIS AD

BRING A FRIEND FOR 5 VISITS - YOU RECEIVE 1 Extra FREE Session!

OPEN 9-9 DAYS A WEEK

EARLIER HOURS AVAILABLE UPON REQUEST

SHERIFF'S SALE
SUPERIOR (CHAN) D-118
SUPERIOR COURT OF NEW JERSEY,
CHANCERY DIVISION, ESSEX COUNTY,
DOCKET NO. F-879-85. THE FEDERAL
NATIONAL MORTGAGE ASSOCIATION, a
corporation, PLAINTIFF vs. DONALD LAN-
CASTER, et al. DEFENDANT'S Execution For
Sale of Mortgaged Premises

By virtue of the above stated writ of Execu-
tion, to me directed, I shall expose for sale by
Public Auction, in SHERIFF'S OFFICE, Essex
County Court Building in Newark, on Tues-
day, the 17th day of September next, at one-
thirty P.M. (Prevaling Time)

The property to be sold is located in the
Township of Irvington in the County of Essex,
and State of New Jersey.

Commonly known as: 96 Harrison Place, Ir-
vington, New Jersey.

Tax Lot No. 5 in Block No. 205

Dimensions of Lot: (Approximately) 50 feet
wide by 95 feet long.

Nearest Cross Street: Situate on the Eastern
side of Harrison Place, 288 feet from the
Southern side of Hopkin Place.

A Full Legal Description can be found in the
Office of the Register of Essex County.

The approximate amount of the Judgment to
be satisfied by said sale is the sum of FIFTY-
SEVEN THOUSAND THREE HUNDRED SIXTY-
SEVEN (57,367.99), together with the costs of the
sale.

The Sheriff reserves the right to adjourn the
sale from time to time as provided by Law.

Newark, N.J. August 12, 1985
THOMAS D'ALESSIO, SHERIFF

Zucker, Goldberg, Becker & Ackerman, Attorneys
The Belleville Times
Aug. 22, 29

Sept. 5, 12, 1985
Fee: \$78.00

SHERIFF'S SALE
SUPERIOR (CHAN) D-222
SUPERIOR COURT OF NEW JERSEY,
CHANCERY DIVISION, ESSEX COUNTY,
DOCKET NO. F-1421-85. FEDERAL NATIONAL
MORTGAGE ASSOCIATION, PLAINTIFF vs.
ARNOLD LEWIS, ET AL. DEFENDANT'S Execu-
tion For Sale of Mortgaged Premises

By virtue of the above stated writ of Execu-
tion, to me directed, I shall expose for sale by
Public Auction, in SHERIFF'S OFFICE, Essex
County Court Building in Newark, on Tues-
day, the 17th day of September next, at one-
thirty P.M. (Prevaling Time)

Municipality: City of Newark, County of Es-
sex.

Street address: 26 Silver Street

Tax Lot and Block: Lot 5, Block 4108

Approximate dimensions: 90 feet x 25 feet

Nearest cross street: Smith Street (formerly
Hillside Road)

Please execute on the Writ and advise me of
the date of the sale.

A Full Legal Description can be found in the
Office of the Register of Essex County.

The approximate amount of the Judgment to
be satisfied by said sale is the sum of FIFTY-
SEVEN THOUSAND THREE HUNDRED SIXTY-
SEVEN (57,367.99), together with the costs of the
sale.

The Sheriff reserves the right to adjourn the
sale from time to time as provided by Law.

Newark, N.J. August 12, 1985
THOMAS D'ALESSIO, SHERIFF

Alvin D. Miller, Attorney
The Belleville Times
Aug. 22, 29

Sept. 5, 12, 1985
Fee: \$75.20

Obituaries

Charles Bridge Sr.; operated dairy farm

Charles A. Bridge Sr., 80,
died Saturday, Aug. 10, in Com-
munity Memorial Hospital,
Hamilton, N.Y.

Mr. Bridge, born in New
York City, lived in Nutley before
moving to Waterville, N.Y., in
1948.

He had been the owner and
operator of Spring Garden
Hardware in Nutley for 18 years
after working as a draftsman at
Walter Kidde in Belleville for 10
years.

While living in Waterville,
N.Y., Mr. Bridge operated a
dairy farm until his retirement
in 1965.

He had been a member of the
Nutley Exempt Fireman's As-
sociation for 14 years.

Surviving are his wife, Alita
(nee Forbese); five sons,
Charles Jr. of Texas, Fred of
Kansas City, Peter of Belleville,
Tom of California and Paul of
Waterville; two brothers,
Edward of Florida and Frank of
Belleville; a sister, Mrs. Marita
D'Avanzo of Nutley; 18
grandchildren and nine great-
grandchildren.

A Mass was offered Wednes-
day in St. Bernard's Church in
Waterville. Interment was in St.
Bernard's Cemetery.

Edward J. Bridges; worked at Tiernan

Edward J. Bridges, 64, a
former employee of Wallace &
Tiernan in Belleville, died Aug. 3
in St. Mary's Hospital, Orange.

Mr. Bridges, a resident of
South Orange, was a financial
consultant for Wallace &
Tiernan for 44 years until his
retirement in 1983.

An Army-Air Corps veteran
of World War II, Mr. Bridges
was a member of the Holy Name
Society of Our Lady of Sorrows

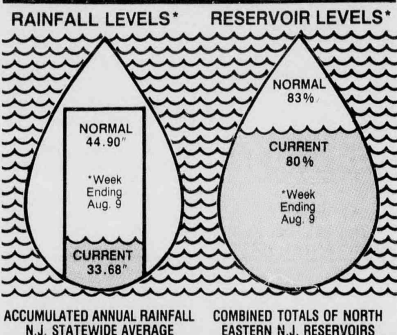
Church and the South Orange
Knights of Columbus.

Born in Nutley, he moved to
South Orange in 1957.

Surviving are three
daughters, Ms. Aileen Martin,
Mrs. Patricia Toth and Miss
Nancy; and two grandchildren.

A Mass was offered in Our
Lady of Sorrows Church, South
Orange. Interment was in Gate
of Heaven Cemetery, East
Hanover.

WATER WATCH



Walter Glennon, at 67

Walter D. Glennon, 67,
formerly of Belleville, died July
29.

Mr. Glennon had been living
in Somerdale, N.J.

Surviving are his wife, Agnes
(nee Biddle); three sons,
Michael of Hihello, Joseph of
Laurel Springs and Walter of
Houston, Texas; a brother,
Christopher of Little Falls;

three sisters, May Thienne of
Nutley, Rita Patrick of Parlin
and Ann (Dolly) Morgan of Coos
Bay, Oregon.

A Mass of Christian Burial
was offered in Our Lady of
Grace R.C. Church, Somerdale.
Interment was in St. Joseph's
Cemetery, Chews Landing.

We Do Windows
FREE ESTIMATES
Thanks to the advanced technology of CertainTeed, a pioneer in the development of vinyl building materials, we now do replacement windows. And we do them right — with virtually maintenance-free solid vinyl extruded frames and insulated glass to greatly reduce energy loss. Phone us for more details.

Essex Replacement Door & Window Co. Inc.
419 Broad St. Bloomfield 743-8603

BACK PAIN NECK PAIN

IT COULD BE PINCHED NERVES

Pinched Nerves May Result In:

- HEADACHES
- LEG PAIN
- DIZZINESS
- NUMBNESS
- SHOULDER PAIN

WHY SUFFER NEEDLESSLY?

A SPINAL EXAMINATION CAN
REVEAL IF YOU HAVE PINCHED NERVES

Most Insurances Provide Coverage
Health (Major Medical 80%*) Liability (Auto Accident 100%*)
Approved Workman's Compensation (on the job injury 100%*)
*Most provide coverage with satisfied deductible

Bloomfield Chiropractic Center
858 Joralemon St. Belleville
759-3600

Dr. Susan Guarino D.C.

Umberto's Corner

Dear Patrons or
Umberto's of Naples:

Thanks to you, we will soon
be moving into a wonderful
new salon located down the
street from our present loca-
tion.

As a result of this, we are
looking to expand our staff —
beauticians and experts in nail
sculptures and other areas are
needed.

If you would care to apply
for these positions please call
759-4900. We are sure you
would enjoy working in our
new and modern surroundings.

UMBERTO
OF NAPLES
547 Washington Ave.
Hair Cutting & Coiffure
549 Washington Ave.
Unisex Extension
Haircutters
Belleville, N.J.
FREE PARKING
759-4900
OPEN SUNDAYS

Mrs. Guibilo; succumbs at 74

Mrs. Marjorie Guibilo, 74, of
Belleville died July 28 in
Pascack Valley Hospital,
Westwood, N.J.

Mrs. Guibilo, born in Nutley,
moved to Belleville 45 years ago.
Surviving are her husband,
Michael; a son, Michael Jr. of
Belleville; and one grandchild.

A Mass was held at St.
Mary's Church, Nutley, follow-
ing a funeral service at Biondi
Funeral Home in Nutley.

You
can strike a
blow against
Cancer with a
Memorial
Gift to your
local Unit
of the
**AMERICAN
CANCER
SOCIETY**

It pays to learn income taxes from H&R Block.

America's Finest Income Tax Course

Learning income taxes now could offer you money-making
opportunities and save you money on your return at tax time.

- Morning, afternoon, evening classes
- Reasonable course fee • Classes begin September 5 & 6
- Held at Belleville area locations

Send for more information today or call now!

Contact our nearest office.

155 Franklin Ave., Nutley, N.J. 07110
235-1000

H&R BLOCK

Please send me free information about your tax prepara-
tion course.

Name _____

Address _____

City _____ State _____ Zip _____

Phone _____

B.T. 8-15-85

Remember
Proud Mary's
Early Bird
Specials
Every
Mon.-Thurs.
5 pm-7pm

HAWAIIAN NIGHTS
At
PROUD MARY'S
Restaurant and Lounge
Every Thursday Night From 8 P.M.
(Starting Thurs., July 25)
HULA ON OVER FOR THE
MOST EXOTIC TROPICAL FRESH
FRUIT CONCOCTIONS
(Alcoholic and Non-Alcoholic)
Hawaiian Music, Free Lais,
and the Most Colorful Shirt
and Best Grass Skirt Contest
Have a Sip of the Islands
at Proud Mary's Lounge
409 Franklin St.
Bloomfield
429-9246

Brunswick Recreation Centers
A BRUNSWICK COMPANY

**BRUNSWICK
Olympic Bowl**

679 WASHINGTON AVE., BELLEVILLE
751-2111

*Cordially invites you to attend
their FREE Open House Parties*

Junior Open House
Saturday, Aug. 24, noon until 6 p.m.
(ages 8 to 18)

Senior Citizen Open House
Thursday, Aug. 29th, 9 a.m. to 3 p.m.
(over 55 yrs. old)

Ladies Daytime Open House
Thursday, Sept. 5th, 9 a.m. to 3 p.m.

OPEN HOUSE INCLUDES: 3 free games of bowling, free use of rental shoes,
free instruction, light refreshments, and a GUARANTEED GOOD TIME!!!
For further information please contact
Kathy or Marty — 751-2111

LEGAL NOTICE

REPORT OF CONDITION

Consolidating domestic and foreign subsidiaries of the Peoples Bank, N.A. of Belleville in the state of New Jersey, at the close of business on June 30, 1985 published in response to call made by Comptroller of the Currency under title 12, United States Code Section 161. Charter Number 12019 Comptroller of the Currency District.

Statement of Assets and Liabilities

Thousands of dollars

Assets

Cash and balances due from

depository institutions

Noninterest-bearing balances and

currency and coin

Interest-bearing balances

Securities

Federal funds sold and securities

under agreements to resell in domestic offices

of the bank and of its Edge and Agreement

subsidiaries, and in IBFs

Loans and lease financing receivables

Loans and leases, net of unearned

income

LESS: Allowance for loan and lease

losses

Assets held in reserve, none

None

Loans and leases, net of unearned

income, allowance, and reserve

None

Assets held in reserve accounts

None

None

Capitalized lease

None

Other real estate owned

None

Investments in unconsolidated

subsidiaries and associated companies

None

Customers' liability to this bank on

acceptances outstanding

None

Intangible assets

None

Other assets

None

Total Assets

183,518

LIABILITIES

Domestic offices

170,055

Noninterest-bearing

28,639

Interest-bearing

141,416

None

Subsidiaries, and IBFs

None

Noninterest-bearing

None

Interest-bearing

None

Federal funds purchased and securities

under agreements to repurchase in domestic

offices of the bank and of its Edge and

Agreement subsidiaries, and in IBFs

None

Agreement notes issued to the U.S.

None

Treasury

None

Other borrowed money

None

Mortgage indebtedness and obligations

under capitalized leases

926

Bank's liability on acceptances executed

and outstanding

None

Notes and debentures subordinated

to deposits

None

Other liabilities

2,343

Total liabilities

173,324

Unlimited-life preferred stock

None

EQUITY CAPITAL

Perpetual preferred stock

None

Common stock

1,388

Surplus

1,388

Undivided profit and capital reserves

7,418

Cumulative foreign currency translation

adjustments

None

Total equity capital

10,194

Limited-life preferred stock

None

stock, and equity capital

183,518

I, Thomas McGuck, Manager, Budgeting of

the above-named bank do hereby declare that

the information contained herein is true and

correct to the best of my knowledge and belief.

Thomas McGuck

8/6/85

We, the undersigned directors, attest the

correctness of this statement of assets and

liabilities. We declare that it has been ex-

amined by us, and to the best of our

knowledge and belief has been prepared in

conformance with the instructions and is true

and correct.

S. Thomas McGuck

William Hildebrandt

Roy D. Post

Rebecca

Thomas McGuck

Aug. 15, 1985

Fee: \$46.53

No. 885-308

SHERIFF'S SALE

SUPERIOR COURT OF NEW JERSEY,

CHANCERY DIVISION, ESSEX COUNTY,

DOCKET NO. F-1484-85 JERSEY MORTGAGE

COMPANY, a corporation, Plaintiff, vs. SAMUEL L. MUNING, et al., DEFENDANTS

Execution For Sale of Mortgaged Premises

By virtue of the above stated writ of Execution, to me directed, I shall expose for sale by Public Auction, in SHERIFF'S OFFICE, Essex County Courts Building in Newark, on Tuesday, the 27th day of August next, at one-thirty P.M., (Prevaling Time)

The property to be sold is located in the City of East Orange in the County of Essex and State of New Jersey.

Commonly known as: 536 Halsted Street, East Orange, New Jersey.

Tax Lot No. 13 in Block No. 464.

Dimensions of Lot: Approximately 50 feet wide by 68 feet long.

Nearest Cross Street: Situate on the easterly side of Halsted Street, 100 feet from the northerly side of Norwood Place.

A full legal description can be found in the Office of the Register of Essex County.

The approximate amount of the Judgment to be satisfied by said sale is the sum of FIFTY-THOUSAND TWO HUNDRED FOUR DOLLARS AND NINETY-TWO CENTS (\$54,204.92), together with the costs of sale.

The Sheriff reserves the right to adjourn the sale from time to time as provided by Law.

Newark, N.J. July 22, 1985

THOMAS D'ALESSIO, SHERIFF

Zucker, Goldberg, Becker & Ackerman, Attorneys

The Belleville Times

Aug. 1, 8, 15, 22, 1985

Fee: \$52.72

No. 885-292

SHERIFF'S SALE

SUPERIOR COURT OF NEW JERSEY,

CHANCERY DIVISION, ESSEX COUNTY,

DOCKET NO. F-1884-85 STANDARD FEDERAL SAVINGS AND LOAN ASSOCIATION OF MONTGOMERY COUNTY, MARYLAND, a corp., Plaintiff, vs. AMOS N. BAILEY, unmarried, et al., DEFENDANTS

Execution For Sale of Mortgaged Premises

By virtue of the above stated writ of Execution, to me directed, I shall expose for sale by Public Auction, in SHERIFF'S OFFICE, Essex County Courts Building in Newark, on Tuesday, the 20th day of August next, at one-thirty P.M., (Prevaling Time)

The property to be sold is located in the Township of Livingston in the County of Essex, and State of New Jersey.

Commonly known as: 140 Lincoln Place, Irvington, New Jersey.

Tax Lot No. 6 in Block No. 287.

Dimensions of Lot: Approximately 57 feet wide by 152 feet long.

Nearest Cross Street: Situate on the southerly side of Lincoln Place, 250 feet from the easterly side of Oak Place.

A complete description can be found in the Essex County Register's Office.

The approximate amount of the Judgment to be satisfied by said sale is the sum of EIGHTY THOUSAND SEVEN HUNDRED THIRTY NINE DOLLARS AND TWENTY SIX CENTS (\$87,739.26), together with the costs of sale.

The Sheriff reserves the right to adjourn the sale from time to time as provided by Law.

Newark, N.J. July 15, 1985

THOMAS D'ALESSIO, SHERIFF

Zucker, Goldberg, Becker & Ackerman, Attorneys

The Belleville Times

Aug. 1, 8, 15, 22, 1985

Fee: \$84.60

No. 885-270

SHERIFF'S SALE

SUPERIOR COURT OF NEW JERSEY,

CHANCERY DIVISION, ESSEX COUNTY,

DOCKET NO. F-920-85 FIDELITY BOND AND MORTGAGE COMPANY, Plaintiff, vs. JOHN CHAIMER, et al., DEFENDANTS

Execution For Sale of Mortgaged Premises

By virtue of the above stated writ of Execution, to me directed, I shall expose for sale by Public Auction, in SHERIFF'S OFFICE, Essex County Courts Building in Newark, on Tuesday, the 3rd day of September next, at one-thirty P.M., (Prevaling Time)

The property to be sold is located in the City of East Orange in the County of Essex and State of New Jersey.

Commonly known as: 441 Fourth Avenue, Newark, N.J.

TAX BLOCK AND LOT: Block 1945 Lot 34.

Dimensions of Lot: 25' x 100'.

NEAREST CROSS STREET: 125' x 100'.

A full legal description is available in the Office of the Register of Essex County.

The approximate amount of the Judgment to be satisfied by said sale is the sum of SEVENTEEN THOUSAND FIVE HUNDRED EIGHTY DOLLARS, AND SIXTY-SIX CENTS (\$17,580.66), together with the costs of the sale.

The Sheriff reserves the right to adjourn the sale from time to time as provided by Law.

Newark, N.J. July 29, 1985

THOMAS D'ALESSIO, SHERIFF

William M.E. Powers, Jr., Attorney

The Belleville Times

Aug. 1, 8, 15, 22, 1985

Fee: \$75.20

No. 885-303

SHERIFF'S SALE

SUPERIOR COURT OF NEW JERSEY,

CHANCERY DIVISION, ESSEX COUNTY,

DOCKET NO. F-4221-85 NATIONAL TRUST ACCEPTANCE CORPORATION, by merger now known as the LOMAS AND NETTELTON COMPANY, Plaintiff, vs. JOHN SWEENEY and JUANITA A. SWEENEY, his wife, et al., DEFENDANTS

Execution For Sale of Mortgaged Premises

By virtue of the above stated writ of Execution, to me directed, I shall expose for sale by Public Auction, in SHERIFF'S OFFICE, Essex County Courts Building in Newark, on Tuesday, the 3rd day of September next, at one-thirty P.M., (Prevaling Time)

The property to be sold is located in the Township of Livingston in the County of Essex, and State of New Jersey.

Commonly known as: 140 Lincoln Place, Irvington, New Jersey.

Tax Lot No. 6 in Block No. 287.

Dimensions of Lot: Approximately 57 feet wide by 152 feet long.

Nearest Cross Street: Situate on the southerly side of Lincoln Place, 250 feet from the easterly side of Oak Place.

A complete description can be found in the Essex County Register's Office.

The approximate amount of the Judgment to be satisfied by said sale is the sum of EIGHTY THOUSAND SEVEN HUNDRED THIRTY NINE DOLLARS AND TWENTY SIX CENTS (\$87,739.26), together with the costs of sale.

The Sheriff reserves the right to adjourn the sale from time to time as provided by Law.

Newark, N.J. July 29, 1985

THOMAS D'ALESSIO, SHERIFF

William M.E. Powers, Jr., Attorney

The Belleville Times

Aug. 1, 8, 15, 22, 1985

Fee: \$75.20

No. 885-303

SHERIFF'S SALE

SUPERIOR COURT OF NEW JERSEY,

CHANCERY DIVISION, ESSEX COUNTY,

DOCKET NO. F-7012-84 FLEET MORTGAGE CORPORATION, Plaintiff, vs. VINCENT B. JOHNSON, et al., DEFENDANTS

Execution For Sale of Mortgaged Premises

By virtue of the above stated writ of Execution, to me directed, I shall expose for sale by Public Auction, in SHERIFF'S OFFICE, Essex County Courts Building in Newark, on Tuesday, the 3rd day of September next, at one-thirty P.M., (Prevaling Time)

The property to be sold is located in the Township of Livingston in the County of Essex, and State of New Jersey.

Commonly known as: 441 Fourth Avenue, Newark, N.J.

TAX BLOCK AND LOT: Block 1945 Lot 34.

Dimensions of Lot: 25' x 100'.

NEAREST CROSS STREET: 125' x 100'.

A full legal description is available in the Office of the Register of Essex County.

The approximate amount of the Judgment to be satisfied by said sale is the sum of SEVENTEEN THOUSAND FIVE HUNDRED EIGHTY DOLLARS, AND SIXTY-SIX CENTS (\$17,580.66), together with the costs of the sale.

The Sheriff reserves the right to adjourn the sale from time to time as provided by Law.

Newark, N.J. July 29, 1985

THOMAS D'ALESSIO, SHERIFF

William M.E. Powers, Jr., Attorney

The Belleville Times

Aug. 1, 8, 15, 22, 1985

Fee: \$75.20

No. 885-303

SHERIFF'S SALE

SUPERIOR COURT OF NEW JERSEY,

CHANCERY DIVISION, ESSEX COUNTY,

DOCKET NO. F-7012-84 FLEET MORTGAGE CORPORATION, Plaintiff, vs. VINCENT B. JOHNSON, et al., DEFENDANTS

Execution For Sale of Mortgaged Premises

By virtue of the above stated writ of Execution, to me directed, I shall expose for sale by Public Auction, in SHERIFF'S OFFICE, Essex County Courts Building in Newark, on Tuesday, the 3rd day of September next, at one-thirty P.M., (Prevaling Time)

The property to be sold is located in the Township of Livingston in the County of Essex, and State of New Jersey.

Commonly known as: 441 Fourth Avenue, Newark, N.J.

TAX BLOCK AND LOT: Block 1945 Lot 34.

Dimensions of Lot: 25' x 100'.

NEAREST CROSS STREET: 125' x 100'.

A full legal description is available in the Office of the Register of Essex County.

The approximate amount of the Judgment to be satisfied by said sale is the sum of SEVENTEEN THOUSAND FIVE HUNDRED EIGHTY DOLLARS, AND SIXTY-SIX CENTS (\$17,580.66), together with the costs of the sale.

The Sheriff reserves the right to adjourn the sale from time to time as provided by Law.

Newark, N.J. July 29, 1985

THOMAS D'ALESSIO, SHERIFF

William M.E. Powers, Jr., Attorney

The Belleville Times

Aug. 1, 8, 15, 22, 1985

Fee: \$75.20

No. 885-303

SHER

BUSINESS DIRECTORY

PLUMBING & HEATING
14 NEW STREET
BELLEVILLE
759-1476

KEEP YOUR PLUMBING YOUNG
J. G. YOUNG & SONS, INC.
PLUMBING & HEATING 12 12

State License No. 3684 & No. 990
Kitchens and Bathrooms Remodeled
Automatic Fire Sprinkler Systems
Gas Heat, Hot Water Heaters, Etc.
Residential • Commercial • Industrial
Repairs • Alterations • New Construction

PEOPLE'S HEATING CONTRACTORS, INC.
RESIDENTIAL
• Burners & Boilers • Service & Maintenance
• Modernization • Efficiency Testing
Reliable Free Inspection
661-1479

Specializing in Heating 24 Hr. Service
11 21

CHILD CARE NURSERY SCHOOLS

Sandy Lane Nursery School

"A Child's World Where Playing Is Learning"
534 1/2 Hill Street
Belleville
751-6300

Days and hours to meet your needs
HOURS: 7:30 to 5:45
Call or come in to register
School open to students
• Arts • Music • Crafts
• Language • Social Development
Continuous day care program for working mothers
Nationally balanced lunch
State Licensed Certified School & Teachers
ACCEPTING REGISTRATION FOR THE SUMMER AND SEPTEMBER
Dedicated to the program of Early Childhood Education 8 5

MOTHER LOOKING TO BABYSIT
Anytime days or nights
CALL 751-7092
OR 751-6889

LITTLE SCHOLAR NURSERY SCHOOL
444 Union Ave.
Belleville
Open daily 7:30-5:00 p.m.
or 7 p.m. day care, half day sessions
Extended hrs. avail. for
busy moms 7 p.m. day care
for kindergarten through
social & academic programs in
all areas. Certified state
pediatric nurse, state
licensed. REGISTER
NOW!
call 751-4600

WISE OWL NURSERY SCHOOL
617 Washington Ave.
Belleville
State License Since 1969

QUALITY program
Sunny, home-like 1st
floor environment
Absolutely No Day Care
Visitors welcome
759-1211
REGISTER NOW FOR
FALL OF 85

WILL BABYSIT CHILD
AGES OF 2 MOS. & 4
YRS. HRS. & PAY
NEGOTIABLE. REFS.
AVAIL.
CALL 751-7282
ANYTIME

The Magic Cottage
Nursery School

A Place Where
Learning is Fun
State Certified School
and Teachers. Balanced
Lunch. Year round full
all-day sessions
• Arts and Crafts •
• Science • Music
• All day kindergarten
registration accepted
now!
759-7558
389 Washington Ave.
Belleville
12 26

GARAGE SALE
3 family yard sale
264 Harrison Street
Nutley, Fri. 10 a.m. to 6 p.m.
Sat. 9 a.m. to 5 p.m.
Sun. 10 a.m. to 4 p.m.

EVERYTHING MUST GO MOVING
furniture, dishes, pots &
pans, & A LOT OF MORE
AUG. 16TH, 17TH, & 18th
9 a.m.-9 p.m.
3110N. 16TH AVE.
BELLEVILLE

HELP WANTED
TEACHERS NEEDED
FOR PUBLIC SCHOOL
CALL 991-5684

Pair of Polk Audio
R.T.A.-11 speakers, 1
year old. \$450 or best offer.
Call anytime

USED DESK - CHAIRS
FILING CABINETS
EDELSTEIN OFFICE
FUTURE WARE
946 Market St. Paterson
(Cor. Lakeside Ave. & Rt. 80)
523-4153 10 17

FOR SALE
Brand new baby carriage,
bassinet, & high chair.
For information, call
759-5209

4 PC DIN RM. PLUS WALL
MIRROR. No chairs. \$125.00
HIDE-A-BED. SLEEP. \$75.00
BABY CHAIR WITH BASSINET &
BUMPER. \$80.00
CALL 462-2833
759-5212

BOOK FOR SALE
History of the Nutley
Veldhome. A special
50th Anniversary Book
written by Nutley School
Editor Michael C.
Gabriele. Facts, records,
photos and sketches of the
legendary cycling stadium.
To order call
667-5669

STOVE
REFRIGERATOR
LIKE NEW. ASKING
\$250 for ea. Call 688-9000
Ext. 302. Before 7:15-8:30
a.m. Call 661-1111

SOPAFED-NEW QUEEN \$131
CALL 939-0327

DRIVEWAY SALE
96 St. Mary's Pl. Nutley
Fri & Sat Aug 16 & 17
Vanity, luggage, books,
miscellaneous items.
Rain date 24 & 25. Sat. &
Sun.

Giant Garage Sale
222 CENTRE ST.
Antiques, furniture, new
& used children's clothes,
miscellaneous items.
5 Cedar Hill Ave.
Belleville
(Off Belleville Ave.)

ESTATE
SALE CONTENTS
Oriental rug, furniture
(some Antiques), lamps,
paintings, silver, cloths,
etc. SAT & SUN 8-17-85
10:00 to 4:00
138 BEECH ST.
BELLEVILLE

LOTS OF GOOD STUFF
FOR SALE
222 CENTRE ST.
(NUTLEY) SAT. 8-17-85
4-10 P.M.
Apt. Sale 8/24-25 10:5
to 12:00. Title 21st
Bkrl. Br. Cryst. Chand.
Orion Carp. Lr. Sfa. Chd.
Lamps, Bkcs, Bkr. S.T.
Lamp (more), 180
Lafayette Ave. Passaic
471-5172

CHILDREN & INFANTS
clothing, toys,
houseware. SAT 8/17-84
pm 123 BELMOHR ST.
BELLEVILLE

FLEA MARKET
FLEA MARKET-Belleville
AMERICAN LEGION
POST 105
621 Washington Ave.
(Near Pathmark &
McDonald's) 8-12
Every Sunday 9:30am-5pm
Call day at 991-4856
or 991-9535

INDOOR FLEA MARKET, \$15
per table. October 6, 1985
9:5 p.m. Bring own table
& chairs. Call 667-999 or 667-7556
for places

USED TV'S BOUGHT CALL 673-3845

Wanted for Cash OLD BOOKS & STAMPS
OLD ORIENTAL RUGS
ANTQUES
Private Buyer
244-6205 10 17

WANTED USED AIR CONDITIONERS CASH
482-3681 8 29

RED ROOM 5 PC. LIVING ROOM. BOTH NEW. \$295. Call 991-0755.
10 10

I'M BUYING TOOLS.
Old. Used. Any Type. Any Quantity.
Call "Gene" 692-4908 4-6 p.m. 438-7413 Days excepting Sunday & Monday 9 12

For Sale
television record player
console. Best offer.
Call after 7:30 p.m. on Friday
& all weekend 751-0632

HELP WANTED
TELLEUS-P.T. position.
Experience preferred but
willing to train. Neat appearance and personable
w/ aptitude for math or
figure work

EARLY CHILDHOOD
TEACHERS' P.T.
BEGINNING IN SEPT.
A.A. DEGREE OR 15
CREDITS IN EARLY
CHILDHOOD. 8:30-2:30
6:30-12:15. Call
HEMPSTEAD
667-1129 8 1

DENTAL RECEPTIONIST
Private Nutley office. P.T. or
evening. pleasant, mature, people
oriented, mature, middle age,
license preferred, flexible hrs.
benefits. Call 661-899

Part time bookkeeper
secretary, small
growing Co. Good
Salary. Trans Avail.
Call 661-1111

Computer operator's
telephone answering service,
typing & calc. necessary.
Will train. Day hrs.
8:5 p.m., eyes 5:10 p.m.
& weekend shift
Call 731-8500

MESSENGER for light
pick-up. Must be able to
drive small truck. Flexible
hours.
Call 244-6111

Honest, mature, individual
needed to work in golf shop.
Full time or part time.
No experience necessary.
Please respond personally.
Call between 8 & 11, Tues-Sun.
751-7611

TPYST SEC
To use Adver 1035' P.T.
position in non smoking
office in Montclair.
Call 746-7300

Messenger/Carrier for
New Based Law Firm.
References required.
Call 642-9000

Cleaning Company looking
for F.T. person to do
window cleaning, floor
washing, general house
work, etc. Driveways.
Must have own car &
valid N.J. license. Exp.
751-2644

REAL ESTATE
EXPERIENCED WANTED
Garden State School of
Real Estate is looking for
qualified instructors to
teach all phases of Real
Estate. Day or evening
class.
Call Donna 239-1216

P.T. TEMPORARY
Mailing house seeks
dependent people to
work on a special project.
Ideal for home-nurses.
Must be avail. from
12:00 to 5 P.M.
Mon thru Fri.
APPLY
791 FAULCON AVE.
CLIFTON 2ND FLOOR

REAL ESTATE
SALESMEN AND BROKERS
Latter classes now forming
GARDEN STATE
SCHOOL OF
REAL ESTATE
571 Belmont Ave.
Verona
For information call
235-1216 or 731-8967 8 15

HURGER KINGS is now
accepting applications for
permanent positions during
the day & closing
of the day. In Nutley
between the hrs. of 2 & 4
p.m.

Hubbard's Cupboard has
immediate openings for
assistant manager &
midnight shift 12 a.m. to
6 a.m. Must be 18 yrs. or
older & willing to work
weeknights & weekends
& holidays
Apply in person
HUBBARD'S CUPBOARD
304 BELLEVILLE AVE.
BELLEVILLE 8 22

AVON WOMEN
WANTED EARN \$8-12
Hr. We will train 429-0301

SALES TRAINEE
Interested varied work
in our Sales Dept. Good
telephone & typing essential.
Excellent salary &
fringe benefits. Call Port-
O-Sun 997-3900

AUTO RENTALS
Drivers positions F.T.
P.T. positions available.
Apply in person or call
Budget Rent-A-Car
194 Washington Ave.
Nutley, N.J.
661-3054

MAIDS
FULL & PART TIME
For Remedy Inc.
Rt. 3 East, Clifton, N.J.
Excellent company
benefits which include
Blue Cross, Blue Shield,
dental, optical, prescription
plan, paid holidays, etc.
Apply in person only to:
The Meadowlows
Job Service
600 Washington Ave.
Belleville, N.J.
599-5922
between 9AM-4PM

CLERICAL-PRICING
Fast growing wholesale
seeks accurate person to
price invoices & handle
cash sales. Knowledge of
discounts & use of
calculator essential. Must
be honest, personable &
positive with benefits 5
days a week 8 a.m. to 5
p.m. Belleville 751-7500

DE FURIA
ELECTRICAL CONTRACTORS
24 Hour Service
Residential, Commercial,
Industrial, Air Conditioning,
Heating, Cooling, Lighting,
Service Changes, Wiring, Alarm
Systems, Ductwork, Corrected.
No Job Too Big or Too Small
N.J. Lic. & Insured No. 8006
Fully Licensed & Bonded
Also Free Estimates
Call 661-3230
If you have an electrical
problem, we will solve it.
89 Moore Pl.
Belleville, N.J. 8 22

VIDEO PRODUCTION
AUDIO VISUAL
PROFESSIONAL
VIDEO RECORDING
• VIDEO CAMCORDER
• REAL ESTATE
• INSURANCE
• COMMERCIAL
• CEREMONIAL
• INDUSTRIAL
DOUGLAS D'AMADIO
(201) 398-8225 8 12

RECEPTIONIST asst. p.T.
Saturdays, 2:30-7:30 p.m.
& Tues mornings, Typing
required. Dan & Nancy
Chiropractic Group, 230
Centre St. Nutley
667-8118

AIR CONDITIONING
LIBERTY
AIR CONDITIONING &
SHEET METAL INC.
661-0372 or 489-6622
Residential Installation
Commercial Specializing in
Sales Service Ductwork
Over 30 yrs. experience
8 22

TRAVEL
NUTLEY TRAVEL SERVICE
800 Bloomfield Ave.
Nutley, N.J. 07110
(201) 235-1234
Specializing in: All-India
Hotels, Resorts, Cruise
Lines, Airfare, Railfare,
Independent Agents, Flights,
Visa, Passport, Hotel, Rental
Cars, Car Rental, etc.
Carmen A. Orechio

READER ADVISOR
MRS GRACE
PSYCHIC TAPIT CARD
READER ADVISOR
CONCERNING
FUTURE MATTERS
PRESENT AFFAIRS,
INDIVIDUALS, LOVE,
HEALTH, CAREER,
FINANCIAL, FOR THE
ANSWER AND OTHER
QUESTIONS CALL THIS
PSYCHIC READER
372-8553 8 22

WEDDING & GRADUATION FAVORS
DO ME A FAVOR
Give a crystal rose for
your wedding favor.
Good quality & good
prices.
FREE ship at home service.
CALL KATHY 8 22

ELECTRICIANS
DE FURIA
ELECTRICAL CONTRACTORS
24 Hour Service
Residential, Commercial,
Industrial, Air Conditioning,
Heating, Cooling, Lighting,
Service Changes, Wiring, Alarm
Systems, Ductwork, Corrected.
No Job Too Big or Too Small
N.J. Lic. & Insured No. 8006
Fully Licensed & Bonded
Also Free Estimates
Call 661-3230
If you have an electrical
problem, we will solve it.
89 Moore Pl.
Belleville, N.J. 8 22

DE FURIA ELECTRICAL CONTRACTORS
24 Hour Service
Residential, Commercial,
Industrial, Air Conditioning,
Heating, Cooling, Lighting,
Service Changes, Wiring, Alarm
Systems, Ductwork, Corrected.
No Job Too Big or Too Small
N.J. Lic. & Insured No. 8006
Fully Licensed & Bonded
Also Free Estimates
Call 661-3230
If you have an electrical
problem, we will solve it.
89 Moore Pl.
Belleville, N.J. 8 22

BOB SKIS TREE CO.
Specializing in Removal of Large &
Dangerous Trees
Crane Service
and Stump
Removals
Fully Insured
546-2657
Rutherford 7 13

D-L LIMOUSINE SERVICE
Weddings • Parties • By
Mitzvahs • Atlantic City •
Newark • Free Traffic
and All Private Affairs
751-7054 8 5

ESSEX LIMOUSINE SERVICE
Ride to any affairs in style,
comfort and luxury with
chauffeurs trained to guide
you personally to your
destination.
284-0642
Newark Airport
Other services at low
cost.
Courier & messenger service
746-3225 & 342-173 8 5

STRETCH LIMO
\$20.00
Newark Airport
Other services at low
cost.
Courier & messenger service
746-3225 & 342-173 8 5

HOME IMPROVEMENT
J. COPPOLA
& SONS INC.
152-1562, 152-1563
Specializing in
Insulated Aluminum
& Vinyl Siding
Fully Insured
Fully Licensed
VITO PROHE
PAINTER & DECORATOR
PAINTER/HANGER
CERAMIC TILE
FREE ESTIMATES
INTERIOR ONLY
CALL 24 HOURS
759-8367 8 22

ALARM SYSTEMS
JOSEF CLARY'S
LOCK & GLASS
Custom Paints & Windows
Framing
• Storm Doors & Mirrors
new & repaired
• Tub & Shower enclosures
Custom Mirrored walls
Locks installed, repaired
rekeyed
• Wood doors installed
• Leaded Glass repaired
• Keys made, Luggage keys
made
• Sliding glass of window glass
installed
• Awning
BURGLAR ALARMS
255 Hoover Ave.
at Inters. of JFK Pkwy
Bloomfield 748-4274 10 10

SHIPPING & RECEIVING
12 yrs exp food products
background preferred
Salary \$15.00 plus bonus.
Call All Phase Employment
At 661-9675, fee paid

DENTAL ASST. EXP.
F.T. SALARY COM-
MENSURATE WITH
EXP. PLEASE CALL
667-0771

COMPUTER TYPESETTER
High school graduate in-
terested in pursuing a
rewarding career in
business. Must have good
typing skills. Computer
knowledge not necessary
but helpful. Will train.
Good benefits. Call for
app. 678-1556 Mon-Fri.

GENERAL OFFICE
DENTAL ASST. EXP.
F.T. SALARY COM-
MENSURATE WITH
EXP. PLEASE CALL
667-0771

CONSTRUCTION
CHANNCE
CONSTRUCTION
COMPANY, INC.
General Contractor,
Residential/Commercial.
General construction of
all masonry work, additions,
concrete work, fully in-
sured. Free Estimates.
Call Angelo Nucci, Jr.
759-8467 8 8

B & J FENCING
Expert commercial, in-
dustrial & residential. If
Custom & repairs at low
Cost!
CALL 998-1817 7 26

BRANCH CLERK
We have an immediate
T. Branch Clerk position
available at our
Atkins Office. Clerical
duties include, customer
service, maintaining
detailed records &
reports, & acting as
receptionist for the
Branch. Ideal candidate
should have good typing
& communication skills &
enjoy serving our
customer. For further in-
formation, call
Call: 882-8700 ext. 210 or
211
PEOPLES BANK N.A.
E.O.E.M.F.

ANY 3 ROOMS PAINTED \$149.00
Wallpaper Removed
Textured Ceilings
Garages & Trim
Interior & Exterior
Fast, Clean Work
NUTLEY BELLEVILLE
PAINTING
667-5306

WARRENS INTERIOR EXTERIOR PAINTING
RESIDENTIAL/COMMERCIAL
CALL WARREN AT
676-2275 8 15

FENCING
B & J FENCING
Expert commercial, in-
dustrial & residential. If
Custom & repairs at low
Cost!
CALL 998-1817 7 26

CONSTRUCTION
CHANNCE
CONSTRUCTION
COMPANY, INC.
General Contractor,
Residential/Commercial.
General construction of
all masonry work, additions,
concrete work, fully in-
sured. Free Estimates.
Call Angelo Nucci, Jr.
759-8467 8 8

PEST CONTROL
COTTON
EXTERMINATING
Qualified Personnel
No Job Too Big Or Small
Free Estimates
24 Hr. Service
676-8781 or 657-9486 8 5

AMERICAN - A PEST CONTROL
TERMITE CONTROL
SPECIALISTS
Fully Insured/Free
Estimates
89-0248
49 Juman Court Bloomfield
24 HOUR SERVICE 8 8

CLEANING
MOORE'S CLEANING
SERVICE INC.
Janitorial Service
• Deep Cleaning
Window Cleaning
Building Maintenance
• Cleaning
Insured
763-0613 8 29

ALL JUNK CARS WANTED
Top Dollar
Paid
Call:
N.J. TOWING
Inc.
751-3338 10 3

LANDSCAPING
JUST LAWNS
MOWING, WEED
PULLING, HEDGE
CLIPPING, ETC.
"Almost as cheap as
doing it yourself"
667-9902 8 22

LANDSCAPING
CAPALBO & SON
LANDSCAPING
Complete Lawn
Maintenance Service.
• Fencing
• Reasonable Rates!
Tree Trimming and
Removal
Railroad Ties & Sod
Call 284-0389
Gardener for Hoffmann & O'Brien
for 10 years. 6 22

SCHOOL TEACHER
WILL DO
LANDSCAPING
PAINTING, CLEANING
ANY ODD JOBS
RELIABLE &
DEPENDABLE
*REASONABLE RATES
CALL 661-9000
OR 759-1302 10 17

G. BASILE & SON LANDSCAPING & CONSTRUCTION
• Landscaping
• Sodding
• Gardening
• Railroad Tie Walls
667-9843 8 22

SCULETTANO CONCRETE & LANDSCAPING
All types of concrete work
Grass cut, sod, shrubs
We carry VHS tapes,
debris & rubbish
Residential & commercial
Call 661-9000
or after 5 PM 8 29

NUTRITION
Feed Your, Alert, Alive
Start your own Herb
Career-invest only your
time and energy-let this
be the first day of the rest
of a SUCCESSFUL life!
Invest!
Call Joanne
935-4547 8 22

MARIO RIZZI & SONS ASPHALT & CONCRETE DRIVEWAYS
S. Seal
coating & Patch-ups,
patios & sidewalks
• We carry VHS tapes,
debris & rubbish
Residential & commercial
Call 661-9000
or after 5 PM 8 29

TV SERVICE
Triangle Television
Service all makes &
models, TV & VCR's
• We carry VHS tapes,
accessories & batteries
at low prices.
CALL DJ SIL SPT 5 P.M.
661-8010
115 Grove St.
Montclair 8 22

MUSIC
SOUND BY SPANKY
Music for ALL occasions.
From Big band to NEW
WAVE. All music mix-
ed professionally.
CALL DJ SIL SPT 5 P.M.
661-8010
115 Grove St.
Montclair 8 22

ANY 3 ROOMS PAINTED \$149.00
Wallpaper Removed
Textured Ceilings
Garages & Trim
Interior & Exterior
Fast, Clean Work
NUTLEY BELLEVILLE
PAINTING
667-5306

WARRENS INTERIOR EXTERIOR PAINTING
RESIDENTIAL/COMMERCIAL
CALL WARREN AT
676-2275 8 15

FENCING
B & J FENCING
Expert commercial, in-
dustrial & residential. If
Custom & repairs at low
Cost!
CALL 998-1817 7 26

BRANCH CLERK
We have an immediate
T. Branch Clerk position
available at our
Atkins Office. Clerical
duties include, customer
service, maintaining
detailed records &
reports, & acting as
receptionist for the
Branch. Ideal candidate
should have good typing
& communication skills &
enjoy serving our
customer. For further in-
formation, call
Call: 882-8700 ext. 210 or
211
PEOPLES BANK N.A.
E.O.E.M.F.

CONSTRUCTION
CHANNCE
CONSTRUCTION
COMPANY, INC.
General Contractor,
Residential/Commercial.
General construction of
all masonry work, additions,
concrete work, fully in-
sured. Free Estimates.
Call Angelo Nucci, Jr.
759-8467 8 8

B & J FENCING
Expert commercial, in-
dustrial & residential. If
Custom & repairs at low
Cost!
CALL 998-1817 7 26

BRANCH CLERK
We have an immediate
T. Branch Clerk position
available at our
Atkins Office. Clerical
duties include, customer
service, maintaining
detailed records &
reports, & acting as
receptionist for the
Branch. Ideal candidate
should have good typing
& communication skills &
enjoy serving our
customer. For further in-
formation, call
Call: 882-8700 ext. 210 or
211
PEOPLES BANK N.A.
E.O.E.M.F.

ANY 3 ROOMS PAINTED \$149.00
Wallpaper Removed
Textured Ceilings
Garages & Trim
Interior & Exterior
Fast, Clean Work
NUTLEY BELLEVILLE
PAINTING
667-5306

FENCING
B & J FENCING
Expert commercial, in-
dustrial & residential. If
Custom & repairs at low
Cost!
CALL 998-1817 7 26

CONSTRUCTION
CHANNCE
CONSTRUCTION
COMPANY, INC.
General Contractor,
Residential/Commercial.
General construction of
all masonry work, additions,
concrete work, fully in-
sured. Free Estimates.
Call Angelo Nucci, Jr.
759-8467 8 8

HELP WANTED

HELP WANTED

HELP WANTED

HELP WANTED

REAL ESTATE

REAL ESTATE

REAL ESTATE

REAL ESTATE

PART TIME TELEPHONE SALES

Sell your 1 local newspaper.
Part-time evenings.
Guaranteed salary plus bonus.
Call 667-3000
Between 6 P.M. & 9 P.M.
Ask for Michelle in Circulation.

Tool & Die Maker

All around exp. Build & repair automatic machines, progressive dies, etc. Steady employment, excellent benefits. Call, write or apply:

Personnel Dept. 997-3000
GOODY PRODUCTS
969 NEWARK TURNPIKE
KEARNY, N.J. 07032
equal opportunity employer M.F.

LEGAL SECRETARY

FOR BELLEVILLE LAW FIRM—FULL TIME. BENEFITS. SALARY COMMENSURATE WITH EXPERIENCE.

CALL MR. POMACO 759-2807

MODELS - MOVIE EXTRAS

Actors - Singers - Dancers
ALL AGES & TYPES
No experience required.

Needed for Motion Pictures, TV Commercials, Print & Modeling.
No Fees
N.J. state Licensed
UNIVERSAL CASTING 201-994-3120

INSIDE CLASSIFIED SALES

Part time and full time classified telephone representatives needed during the daytime. Must be able to type. Guaranteed salary plus commission.

Call 667-3000
Ask for Phyllis
Between 9-3 P.M.

SALESPERSON

TELEVISION COMMISSION FOR WELL KNOWN TV STUDIO. GOOD COMMISSION. SALES EXPERIENCE. PREFERRED. CONTACT HOWIE WEEKDAYS BETWEEN 9 A.M. - 11 A.M.
667-2700

CAFETERIA

WORKER
10:30 AM-3PM
Part time position for general helper in busy industrial cafeteria. Must be capable of adding figures accurately & rapidly & working cash register. Previous exp. req'd. Congenial atmosphere.

Call W.W. Reinhold for appt.
Belleville
Phone: 759-8000
An Equal Opportunity Employer

TYPIST

MEDICAL
TRAINEE

We presently seek an individual with excellent typing skills and with a good command of grammar, punctuation, and spelling to be trained as a Medical Transcriptionist to work either AM - 3PM or 3PM - 11PM, Mon - Fri.

We offer a competitive starting salary while you train as well as an excellent full paid training benefits package. Successful completion of a training program will lead to full time position as a hospital Medical Transcriptionist.

Apply 10 am - 4 pm
Personnel Dept.

The Hospital Center at Orange
188 S. Essex Ave.
Orange, NJ 07061

PART TIME WORK - 1985 Football season is here now accepting applications for counter help, cashiers, vendors, waitresses and buspersons. Apply in person at Harry M. Stevens at Giant Stadium, 100 Gates B & C, East Rutherford, NJ Monday, Thursday 10am-4pm & Wednesday & Thursday evenings until 7:30pm.

Apply 10 am - 4 pm
Personnel Dept.

The Hospital Center at Orange
188 S. Essex Ave.
Orange, NJ 07061

PART TIME WORK - 1985 Football season is here now accepting applications for counter help, cashiers, vendors, waitresses and buspersons. Apply in person at Harry M. Stevens at Giant Stadium, 100 Gates B & C, East Rutherford, NJ Monday, Thursday 10am-4pm & Wednesday & Thursday evenings until 7:30pm.

Apply 10 am - 4 pm
Personnel Dept.

The Hospital Center at Orange
188 S. Essex Ave.
Orange, NJ 07061

PART TIME WORK - 1985 Football season is here now accepting applications for counter help, cashiers, vendors, waitresses and buspersons. Apply in person at Harry M. Stevens at Giant Stadium, 100 Gates B & C, East Rutherford, NJ Monday, Thursday 10am-4pm & Wednesday & Thursday evenings until 7:30pm.

Apply 10 am - 4 pm
Personnel Dept.

The Hospital Center at Orange
188 S. Essex Ave.
Orange, NJ 07061

PART TIME WORK - 1985 Football season is here now accepting applications for counter help, cashiers, vendors, waitresses and buspersons. Apply in person at Harry M. Stevens at Giant Stadium, 100 Gates B & C, East Rutherford, NJ Monday, Thursday 10am-4pm & Wednesday & Thursday evenings until 7:30pm.

Apply 10 am - 4 pm
Personnel Dept.

The Hospital Center at Orange
188 S. Essex Ave.
Orange, NJ 07061

PART TIME WORK - 1985 Football season is here now accepting applications for counter help, cashiers, vendors, waitresses and buspersons. Apply in person at Harry M. Stevens at Giant Stadium, 100 Gates B & C, East Rutherford, NJ Monday, Thursday 10am-4pm & Wednesday & Thursday evenings until 7:30pm.

Apply 10 am - 4 pm
Personnel Dept.

The Hospital Center at Orange
188 S. Essex Ave.
Orange, NJ 07061

PART TIME WORK - 1985 Football season is here now accepting applications for counter help, cashiers, vendors, waitresses and buspersons. Apply in person at Harry M. Stevens at Giant Stadium, 100 Gates B & C, East Rutherford, NJ Monday, Thursday 10am-4pm & Wednesday & Thursday evenings until 7:30pm.

Apply 10 am - 4 pm
Personnel Dept.

The Hospital Center at Orange
188 S. Essex Ave.
Orange, NJ 07061

PART TIME WORK - 1985 Football season is here now accepting applications for counter help, cashiers, vendors, waitresses and buspersons. Apply in person at Harry M. Stevens at Giant Stadium, 100 Gates B & C, East Rutherford, NJ Monday, Thursday 10am-4pm & Wednesday & Thursday evenings until 7:30pm.

Apply 10 am - 4 pm
Personnel Dept.

The Hospital Center at Orange
188 S. Essex Ave.
Orange, NJ 07061

PART TIME WORK - 1985 Football season is here now accepting applications for counter help, cashiers, vendors, waitresses and buspersons. Apply in person at Harry M. Stevens at Giant Stadium, 100 Gates B & C, East Rutherford, NJ Monday, Thursday 10am-4pm & Wednesday & Thursday evenings until 7:30pm.

Apply 10 am - 4 pm
Personnel Dept.

The Hospital Center at Orange
188 S. Essex Ave.
Orange, NJ 07061

PART TIME WORK - 1985 Football season is here now accepting applications for counter help, cashiers, vendors, waitresses and buspersons. Apply in person at Harry M. Stevens at Giant Stadium, 100 Gates B & C, East Rutherford, NJ Monday, Thursday 10am-4pm & Wednesday & Thursday evenings until 7:30pm.

Apply 10 am - 4 pm
Personnel Dept.

The Hospital Center at Orange
188 S. Essex Ave.
Orange, NJ 07061

PART TIME WORK - 1985 Football season is here now accepting applications for counter help, cashiers, vendors, waitresses and buspersons. Apply in person at Harry M. Stevens at Giant Stadium, 100 Gates B & C, East Rutherford, NJ Monday, Thursday 10am-4pm & Wednesday & Thursday evenings until 7:30pm.

Apply 10 am - 4 pm
Personnel Dept.

LIGHT FACTORY PACKERS/OPERATORS

FEMALE/M
DAY SHIFT 7AM-3PM
EVENING SHIFT 3PM-11PM
EXPERIENCED FACTORY WORKERS PREFERRED.
LIGHT CLEAN WORK. ALL BENEFITS.
STEADY JOB AT
MODERN MANUFACTURING PLANT
VAN NESS PLASTICS

555 CORTLANDT ST.

759-6200

BELLEVILLE

TEMPORARY

FULL TIME

PART TIME

Are you interested in earning extra money for Christmas? We are accepting applications for Merchandise Processors for our Christmas Season, which commences in Mid-July.

FULL TIME: 8 am-4:30 pm
PART TIME: 9 am-1pm or 12:30-4:30pm
Mon., Fri or Tues-Sat
SCHEDULES AVAILABLE

Ideal for homemakers or as a second job! Apply Personnel Dept 9am-4pm.

bomberger

DISTRIBUTION CENTER
FRANKLIN ST. BLOOMFIELD
equal opportunity employer M.F.

MAINTENANCE MECHANIC
NIGHTS
General maintenance experience required for manufacturing plant. Knowledge of electric installation and control circuits helpful. Good starting salary. Call, write or apply: GOODY PRODUCTS, INC. 969 Newark Turnpike, Kearny, N.J. 07032

CLERK TYPIST
Immediate opening available offering diversified duties. Word processing helpful. 35 hour week. Liberal company benefits.

CALL PERSONNEL
997-3000

DATA ENTRY
OPERATOR
Part time, 24 year experience on IBM Series 1 or related Data Entry Systems. Liberal company benefits. Good starting salary.

CALL PERSONNEL
997-3000

GLAZIER
EXPERIENCED
Call 667-5406

LEGAL SECUR
For Nutley law firm. Steno necessary. EXP. in estate & title.
Call 661-5000

SECRETARY
TEMPORARY
We presently seek a fully experienced Secretary to work either full time or part time (10 AM - 3 PM). Mon-Fri in our busy medical staff office. Position available for 8-12 weeks commencing mid-August.

We require excellent technical skills including good stenographic skills as well as sound interpersonal skills. Medical terminology not essential. We offer a competitive rate of pay based on experience as well as a pleasant working environment.

Apply 10 AM - 4 PM
or call Personnel Dept.

The Hospital Center at Orange
188 S. Essex Ave.
Orange, NJ 07061

RECEPTIONIST
For College-Part Time. Immediate opening in admissions office part time 4 to 8 pm Monday through Thursday. Typing 40 wpm. Salary \$8.17 per hour.

Send Letter of Interest by August 23, 1985 to ADMISSIONS OFFICE.

BLOOMFIELD COLLEGE
Bloomfield, New Jersey 07003
AA EOE Title IX

SECRETARY GLE
FOR SMALL BUSY FIRM. OFFICE. Knowledge of computer helpful. PC & Processor a must. excel phone.
667-9808

EARN EXTRA MONEY! PART TIME OR FULL TIME. MALE/FEMALE. TO DO LIGHT ASSEMBLY WORK. MIN. WAGES. 997-0980

CHURCH SECRETARY
Typing, office machines, word processing, good organizer, self-starter, people oriented. Send resume and salary requirements to Personnel Comm., Bloomfield Presbyterian Church, On the Green, Bloomfield, N.J. 07003

PT CASHIER, for High Grade jewelry shoe store in Nutley. Hrs. 9-3. Mon thru Fri.
CALL FOR APPT. 667-8964

NATIONAL PERSONNEL

RECEIPT 5235

Front desk, dividend spots, switch bd. typ. CRT, ref. bd. checks. Lg Co. gd. benefits.
GALGUY Friday 5300
Local Co seek indiv w/typ. & ability to deal w/people.

SECY 517K

NO STENO. Local Co. seeks well organized indiv. Compose letters, work at own pace.

COSTING CLERK 517K
Major Corp. seeks indiv w/costing exp. production analysis, spec sheets, com. benefits.

Fdp. Call Kathy Phillips at 743-1614

NATIONAL PERSONNEL

CHIC LEE, LEVI, E. Z STREET

GOOD AT FIGURES
NICE HANDWRITING
ESSENTIAL 3 1/2 HOUR WEEK BENEFITS

GOODMAN SALES CO.

NORTH ARLINGTON
997-2900

Business Opportunities

OWN YOUR OWN JEAN SPORTSWEAR. LADIES. APPAREL. CHILDREN. LARGE SIZE. COMBINATION 57.00. 57.00. MATERNITY. ACCESSORIES. JORDACHE. CHIC LEE, LEVI, E. Z STREET. IZOD. ESPRIT. TOMBOY. CALVIN. KLEIN. SERGIO VALENTE. EVAN PICONE. LIZ CLAIBORNE. MEMBERS ONLY. GASOLINE.

HEALTHTEX. OVER 100 OTHERS. \$13,300 to \$24,900. INVENTORY. TRAINING. FIXTURES. GRAND OPENING ETC. CAN OPEN 15 DAYS. MR. LOUGHLIN 1-(612) 888-6555.

SITUATIONS WANTED

POSITION WANTED
Experienced janitor - night watchman - caretaker - apartment superintendent. Full or part time.
Tel. 667-6000
Ask for Williamson

Nutley or surrounding area mature professional executive, refrigeration & stove supplied. Near all buses.
Call 667-7586

BELLEVILLE 6 rm home, 2 baths, dead end st. near golf course. Sept. 1, 850 plus utils. No pets.
MacMunn Co. Realtor 667-3440

BELLEVILLE 3 rms, mod kit, completely furnished & decorated. Incl. all appliances & carpet. \$1200. Avail. Oct. 1.

Nutley 1 bdrm mod apt. Avail. Aug. 1. \$810 incl. heat, water, carpet, appliances.

Nutley Furn luxury Condo: 2 bdrms. liv. rm. din. rm. mod. kit, completely furnished & decorated. Incl. all appliances & carpet. \$1200. Avail. Oct. 1.

CLIFTON 1 bdrm 2 bdrm Townhouse: 2 1/2 baths, gar. pool, tennis court. \$1100. avail. Vacant.

NUTLEY 3 bdrms. 2 1/2 baths, insulated walls, central A/C, solid masonry floors. Many other fine features. Call today for an appointment to review floor plan. Starting at \$175,000. Offered exclusively through

WEST CALDWELL ROMANTIC sunset & mountain view from custom built & glassed family rm. of classic colonial. Designer built in 2 fireplaces, formal din. rm. liv. rm. & new kit. Prestigious oak floors. Many other walk to exc. schools. Early possession & just reduced to \$160's. Principals ONLY.
CALL 226-1897

BELLEVILLE 4 room, 1st fl 2 family house. 3 1/2 rms. mod. kit, mod. utilities. 1 Month lease. Call after 2:30 p.m. 753-6262

RENT A CONDO. Avail. 9/1. Is for you with a new kitchen, new bath & new carpet. A great location \$75 with H/w supplied. Circus Realtor 773-6262

RENT A CONDO. Avail. 9/1. Is for you with a new kitchen, new bath & new carpet. A great location \$75 with H/w supplied. Circus Realtor 773-6262

RENT A CONDO. Avail. 9/1. Is for you with a new kitchen, new bath & new carpet. A great location \$75 with H/w supplied. Circus Realtor 773-6262

RENT A CONDO. Avail. 9/1. Is for you with a new kitchen, new bath & new carpet. A great location \$75 with H/w supplied. Circus Realtor 773-6262

RENT A CONDO. Avail. 9/1. Is for you with a new kitchen, new bath & new carpet. A great location \$75 with H/w supplied. Circus Realtor 773-6262

RENT A CONDO. Avail. 9/1. Is for you with a new kitchen, new bath & new carpet. A great location \$75 with H/w supplied. Circus Realtor 773-6262

RENT A CONDO. Avail. 9/1. Is for you with a new kitchen, new bath & new carpet. A great location \$75 with H/w supplied. Circus Realtor 773-6262

RENT A CONDO. Avail. 9/1. Is for you with a new kitchen, new bath & new carpet. A great location \$75 with H/w supplied. Circus Realtor 773-6262

RENT A CONDO. Avail. 9/1. Is for you with a new kitchen, new bath & new carpet. A great location \$75 with H/w supplied. Circus Realtor 773-6262

RENT A CONDO. Avail. 9/1. Is for you with a new kitchen, new bath & new carpet. A great location \$75 with H/w supplied. Circus Realtor 773-6262

RENT A CONDO. Avail. 9/1. Is for you with a new kitchen, new bath & new carpet. A great location \$75 with H/w supplied. Circus Realtor 773-6262

RENT A CONDO. Avail. 9/1. Is for you with a new kitchen, new bath & new carpet. A great location \$75 with H/w supplied. Circus Realtor 773-6262

RENT A CONDO. Avail. 9/1. Is for you with a new kitchen, new bath & new carpet. A great location \$75 with H/w supplied. Circus Realtor 773-6262

RENT A CONDO. Avail. 9/1. Is for you with a new kitchen, new bath & new carpet. A great location \$75 with H/w supplied. Circus Realtor 773-6262

RENT A CONDO. Avail. 9/1. Is for you with a new kitchen, new bath & new carpet. A great location \$75 with H/w supplied. Circus Realtor 773-6262

RENT A CONDO. Avail. 9/1. Is for you with a new kitchen, new bath & new carpet. A great location \$75 with H/w supplied. Circus Realtor 773-6262

RENT A CONDO. Avail. 9/1. Is for you with a new kitchen, new bath & new carpet. A great location \$75 with H/w supplied. Circus Realtor 773-6262

RENT A CONDO. Avail. 9/1. Is for you with a new kitchen, new bath & new carpet. A great location \$75 with H/w supplied. Circus Realtor 773-6262

RENT A CONDO. Avail. 9/1. Is for you with a new kitchen, new bath & new carpet. A great location \$75 with H/w supplied. Circus Realtor 773-6262

RENT A CONDO. Avail. 9/1. Is for you with a new kitchen, new bath & new carpet. A great location \$75 with H/w supplied. Circus Realtor 773-6262

RENT A CONDO. Avail. 9/1. Is for you with a new kitchen, new bath & new carpet. A great location \$75 with H/w supplied. Circus Realtor 773-6262

RENT A CONDO. Avail. 9/1. Is for you with a new kitchen, new bath & new carpet. A great location \$75 with H/w supplied. Circus Realtor 773-6262

RENT A CONDO. Avail. 9/1. Is for you with a new kitchen, new bath & new carpet. A great location \$75 with H/w supplied. Circus Realtor 773-6262

RENT A CONDO. Avail. 9/1. Is for you with a new kitchen, new bath & new carpet. A great location \$75 with H/w supplied. Circus Realtor 773-6262

RENT A CONDO. Avail. 9/1. Is for you with a new kitchen, new bath & new carpet. A great location \$75 with H/w supplied. Circus Realtor 773-6262

RENT A CONDO. Avail. 9/1. Is for you with a new kitchen, new bath & new carpet. A great location \$75 with H/w supplied. Circus Realtor 773-6262

RENT A CONDO. Avail. 9/1. Is for you with a new kitchen, new bath & new carpet. A great location \$75 with H/w supplied. Circus Realtor 773-6262

RENT A CONDO. Avail. 9/1. Is for you with a new kitchen, new bath & new carpet. A great location \$75 with H/w supplied. Circus Realtor 773-6262

RENT A CONDO. Avail. 9/1. Is for you with a new kitchen, new bath & new carpet. A great location \$75 with H/w supplied. Circus Realtor 773-6262

RENT A CONDO. Avail. 9/1. Is for you with a new kitchen, new bath & new carpet. A great location \$75 with H/w supplied. Circus Realtor 773-6262

RENT A CONDO. Avail. 9/1. Is for you with a new kitchen, new bath & new carpet. A great location \$75 with H/w supplied. Circus Realtor 773-6262

RENT A CONDO. Avail. 9/1. Is for you with a new kitchen, new bath & new carpet. A great location \$75 with H/w supplied. Circus Realtor 773-6262

RENT A CONDO. Avail. 9/1. Is for you with a new kitchen, new bath & new carpet. A great location \$75 with H/w supplied. Circus Realtor 773-6262

RENT A CONDO. Avail. 9/1. Is for you with a new kitchen, new bath & new carpet. A great location \$75 with H/w supplied. Circus Realtor 773-6262

APARTMENTS WANTED

ATTENTION LANDLORDS!

We have many qualified tenants that are screened and waiting for apartments or homes. You can choose that special tenant at no cost to you. For information call Tony Gander
MARZULLI REALTORS
264 Belleville Ave., Bloomfield, N.J.
743-2306

BLOOMFIELD 3 1/2 rm Garden 9-11 \$550 incl. heat, hot water, appliances & garage.

BLOOMFIELD 3 1/2 rm Garden 9-11 \$550 incl. heat, hot water, appliances & garage.

BLOOMFIELD 3 1/2 rm Garden 9-11 \$550 incl. heat, hot water, appliances & garage.

BLOOMFIELD 3 1/2 rm Garden 9-11 \$550 incl. heat, hot water, appliances & garage.

BLOOMFIELD 3 1/2 rm Garden 9-11 \$550 incl. heat, hot water, appliances & garage.

BLOOMFIELD 3 1/2 rm Garden 9-11 \$550 incl. heat, hot water, appliances & garage.

BLOOMFIELD 3 1/2 rm Garden 9-11 \$550 incl. heat, hot water, appliances & garage.

BLOOMFIELD 3 1/2 rm Garden 9-11 \$550 incl. heat, hot water, appliances & garage.

BLOOMFIELD 3 1/2 rm Garden 9-11 \$550 incl. heat, hot water, appliances & garage.

BLOOMFIELD 3 1/2 rm Garden 9-11 \$550 incl. heat, hot water, appliances & garage.

BLOOMFIELD 3 1/2 rm Garden 9-11 \$550 incl. heat, hot water, appliances & garage.

BLOOMFIELD 3 1/2 rm Garden 9-11 \$550 incl. heat, hot water, appliances & garage.

BLOOMFIELD 3 1/2 rm Garden 9-11 \$550 incl. heat, hot water, appliances & garage.

BLOOMFIELD 3 1/2 rm Garden 9-11 \$550 incl. heat, hot water, appliances & garage.

BLOOMFIELD 3 1/2 rm Garden 9-11 \$550 incl. heat, hot water, appliances & garage.

BLOOMFIELD 3 1/2 rm Garden 9-11 \$550 incl. heat, hot water, appliances & garage.

BLOOMFIELD 3 1/2 rm Garden 9-11 \$550 incl. heat, hot water, appliances & garage.

BLOOMFIELD 3 1/2 rm

REAL ESTATE

REAL ESTATE

REAL ESTATE

REAL ESTATE

REAL ESTATE

REAL ESTATE

REAL ESTATE

REAL ESTATE

REAL ESTATE

180 Centre St.
Nutley, N.J. 07110
667-3440

GEORGE E. MAC MUNN CO.

REALTORS

100 Woodport Road
Sparta, N.J. 07871
729-8727



NUTLEY PARK — 73 x 122 lot, 4 rooms on 1st with fireplace, 3 bedrooms & new bath, family room, modern eat-in kitchen & detached garage. ASKING \$139,900.



JUST LISTED — NUTLEY — custom built one owner home in Spring Garden area, frpl., nice dining room, 3 bedrooms, encl. porch, maint. free exterior. ASKING \$134,900.

SUCCESS
Our Expert
Sales Staff
Can Achieve
The Same
For You —
List With
Mac Munn

Look for this Emblem



REALTOR



JUST LISTED — ASKING \$125,900. BYRAM TWP. 2 mi. north of Rt. 80 off Rt. 206, beautiful level 145 x 188 property, 4 bedrooms, 2 baths, lovely fam. room, covered deck from sliders in Din. Rm., A GREAT BUY!!!

SPARTA — ACROSS FROM LAKE — Raised Ranch with beautiful views, 3 bedrooms, 2 baths, huge family room, rear deck. ASKING \$114,900.

Speaking of wonderful homes...



BLOOMFIELD
New Living Large Colonial. If you like big rooms (MBR 12 x 12 and lots of natural wood work this 7 room beauty is for you! 1 R. formal dining room, 1 G. 12 x 12, 1 BR., and extra room, with two car garage, large yard. Convenient to all transportation. Only \$114,900. Call over Mickey or Elaine 743-4017

Dial us.

Century 21
WAYNE K. THOMAS
REALTORS

277 Broad Street Bloomfield, New Jersey
(201) 429-7400

Each office independently owned and operated
MEMBER OF BLOOMFIELD GLEN RIDGE, NUTLEY, BELLEVILLE BOARD OF REALTORS



Office Manager
Rosemarie Perrone

334 Belleville Ave. Belleville, N.J.
751-1121



Belleville
Just Listed. Alum. sided 6 room Colonial w/sunporch. Fenced in yard. Corner property. — School area. Asking \$105,000.

Residential • Commercial • Industrial • Investments • Mortgages • Insurance

Put the power of Number 1 to work



AMERICA'S NUMBER 1
TOP SELLER
CENTURY 21

CAREER MINDED? WEAR THE GOLD!

Every Saturday, from 10 a.m. to 12, we will be available to answer any questions you may have regarding a career in real estate. Licensing requirements, schools, training and continuing education are some of the topics covered.
Call or just stop in at



HOMES R US, INC.

544 Washington Ave. Belleville
Member - Bloomfield, Nutley, Glen Ridge & Belleville Board of Realtors
Multiple Listing Service
751-8800

FOR SALE

GOVERNMENT HOMES
from \$1 U. repair. Also
delinquent tax property.
Call 1-800-687-0900 Ext.
GH-7100 for information.
10-3

ESSEX COUNTY
APTS AVAILABLE
ALL TYPES
& SIZES
CALL 429-9054
RENTALS UNLIMITED

BLOOMFIELD
\$125,000
Colonial 4 bdrms, mod
bath, liv rm, formal din
rm, eat-in-kitch, fin rec rm.
Move-in-cond.
NUTLEY
New raised ranch, brick
front & alum, 3 bdrms, 2
baths, liv rm w/p. for
mail, dr, 2 car garage,
central air. Many extras.

**PILGRIM
REALTY**
759-3349

ALL LANDLORDS
We want your apartments.
None too small or too large.
We send all prospective ten-
ants to you by appointment
only. Absolutely no fee in-
volved. Our service to you
completes your service to us.

429-9084
RENTALS UNLIMITED

**REAL ESTATE
WANTED**

**LOOKING FOR HANDY
MAN SPECIAL YOUNG
SON & Elderly father
looking for 2 or 3 fam
home. Call Pete 748-6372**

**FURNISHED
ROOMS**

Nutley - Furnished rm &
bath, gentlemen. Non
smoker. Call 667-7090

SHERIFF'S SALE
SUPERIOR (CHAND) D-141
SUPERIOR COURT OF NEW JERSEY,
CHANCERY DIVISION, ESSEX COUNTY,
DOCKET NO. F-4771-84 CENTRAL
MORTGAGE COMPANY, PLAINTIFF -vs-
JAMES H. KENYON, et ux, DEFENDANTS
Execution For Sale of Mortgaged Premises
By virtue of the above stated writ of Execution, to me directed, I shall expose for sale by Public Auction, in the Sheriff's Office, Essex County Courts Building in Newark, on Tuesday, the 20th day of August next, at one-thirty P.M., (Prevaling Time).
CITY OF EAST ORANGE, COUNTY OF ESSEX AND STATE OF NEW JERSEY
30 GLENWOOD PLACE, EAST ORANGE, NEW JERSEY
LOT 610 BLOCK 3
DIMENSIONS: 350 feet from intersection of Prospect Street, 100 feet x 158.25 feet x 10-0-1 feet x 160.67 feet
A full legal description can be found in the Essex County Register's Office.
The approximate amount of the Judgment to be satisfied by said sale is the sum of SIXTY THREE THOUSAND TWENTY DOLLARS AND NINETEEN NINE CENTS, (\$63,020.99), together with the costs of this sale.
The Sheriff reserves the right to adjourn the sale from time to time as provided by Law.
Newark, N.J. July 15, 1985
THOMAS J. D'ALESSIO, Sheriff
Lahiri, Wisniewski & Lahiri, Attorneys

Bloomfield Life
July 25,
Aug. 1, 8, 15, 1985
Fee: \$75.70
No. B085-33

SHERIFF'S SALE
SUPERIOR (CHAND) D-151
SUPERIOR COURT OF NEW JERSEY,
CHANCERY DIVISION, ESSEX COUNTY,
DOCKET NO. F-4808-84 MANUFACTURERS
HANOVER MORTGAGE CORPORATION,
PLAINTIFF -vs- ALEXANDER Q. LOOPER, et
married, et al, DEFENDANTS Execution For
Sale of Mortgaged Premises
By virtue of the above stated writ of Execution, to me directed, I shall expose for sale by Public Auction, in the Sheriff's Office, Essex County Courts Building in Newark, on Tuesday, the 20th day of August next, at one-thirty P.M., (Prevaling Time).
Property to be sold is located at: Town of Irvington, County of Essex, State of New Jersey. Premises is known as: 60 Myrtle Avenue, Irvington, N.J.
Tax Lot #17, Block #86
Dimensions approximately: 200x44
Nearest Cross Street: 678 "gingling" Avenue
A full legal description can be found in the Office of the Sheriff of Essex County.
The approximate amount of the Judgment to be satisfied by said sale is the sum of SIXTY SIX THOUSAND TWO HUNDRED THIRTY TWO DOLLARS AND THIRTY FIVE CENTS, (\$66,232.35), together with the costs of this sale.
The Sheriff reserves the right to adjourn the sale from time to time as provided by Law.
Newark, N.J. July 25,
Aug. 1, 8, 15, 1985
Fee: \$73.32
No. B085-32

Bloomfield Life
July 25,
Aug. 1, 8, 15, 1985
Fee: \$73.32
No. B085-32

SHERIFF'S SALE
SUPERIOR (CHAND) D-214
SUPERIOR COURT OF NEW JERSEY,
CHANCERY DIVISION, ESSEX COUNTY,
DOCKET NO. F-1400-85
GUARDIAN MORTGAGE CORP.,
PLAINTIFF -vs- LAWRENCE
THOMPSON, ET AL DEFENDANTS
Execution For Sale of Mortgaged Premises
By virtue of the above stated writ of Execution, to me directed, I shall expose for sale by Public Auction, in the Sheriff's Office, Essex County Courts Building in Newark, on Tuesday, the 17th day of September next, at one-thirty P.M., (Prevaling Time).
CONCISE STATEMENT OF DESCRIPTION OF REAL PROPERTY TO BE SOLD
RE: Fidelity Bond & Mortgage Co. vs. Lopez, et ux, et al.
DOCKET NO. F-8813-83
MUNICIPALITY: City of Newark
COUNTY AND STATE: COUNTY OF ESSEX, STATE OF N.J.
STREET & STREET NO. 22 Springfield Avenue
TAX BLOCK & LOT: Tract One, Block 96.51 feet x 7 feet, Tract Two, Block 30.65 feet x 100 feet
DIMENSIONS OF LOT: Tract One, Block 132.83 feet from Lot, North 9th Street, Tract Two, Block 102.18 feet from Lot, North 9th Street
The approximate amount of the Judgment to be satisfied by said sale is the sum of THIRTY SEVEN THOUSAND NINE HUNDRED TWELVE DOLLARS AND FORTY TWO CENTS (\$37,912.42), together with the costs of this sale.
The Sheriff reserves the right to adjourn the sale from time to time as provided by Law.
Newark, N.J. August 5, 1985
THOMAS J. D'ALESSIO, Sheriff
William M.E. Powers, Jr.
The Bloomfield Life
Aug. 22, 29, 1985
Fee: \$84.60
No. B085-38

SHERIFF'S SALE
SUPERIOR (CHAND) F-299
SUPERIOR COURT OF NEW JERSEY, LAW
DIVISION, ESSEX COUNTY, DOCKET NO. F-1982-85
UNION COUNTY SAVINGS BANK, a corporation, PLAINTIFF -vs- BRENDA
JOHNSON, single, et al, DEFENDANTS
Execution For Sale of Mortgaged Premises
By virtue of the above stated writ of Execution, to me directed, I shall expose for sale by Public Auction, in the Sheriff's Office, Essex County Courts Building in Newark, on Tuesday, the 27th day of August next, at one-thirty P.M., (Prevaling Time). All the right, title and interest of the above named defendant Alfred Mariani, of and to all that tract or parcel of land and premises hereinafter Particularly described, situate, lying and being in the Borough of Roseland, in the County of Essex, and State of New Jersey.
KNOWN and designated as Lot 17 in block 429 on map entitled "Map of Centerville, Borough of Roseland, Essex County, N.J." filed in the Essex County Register's Office on February 23, 1967 as Map #2950.
BEING and intended to be part of the same land and premises conveyed to Summit Hill

Contraction, Inc., a corporation of the State of New Jersey, by Deed of Long Hill Village, Inc., a corporation of the State of New Jersey, dated January 19, 1967 and recorded in the office of the Register of Essex County on January 27, 1967 in Book 4219 of Deeds for said County, page 1786c.

Being also known and designated as 12 Davenport Avenue, Roseland, N.J.
The approximate amount of the Judgment to be satisfied by said sale is the sum of TWENTY THREE THOUSAND SIX HUNDRED FOURTEEN DOLLARS AND EIGHTEEN CENTS, (\$23,614.18), together with the costs of this sale.
The Sheriff reserves the right to adjourn the sale from time to time as provided by Law.
Newark, N.J. July 22, 1985
THOMAS J. D'ALESSIO, Sheriff
Glen J. Vido, Attorney

The Bloomfield Life
Aug. 1, 8, 15, 22, 1985
\$95.88
No. B085-34

SHERIFF'S SALE
SUPERIOR COURT OF NEW JERSEY,
CHANCERY DIVISION, ESSEX COUNTY, DOCKET NO. F-1400-85
GUARDIAN MORTGAGE CORP.,
PLAINTIFF -vs- LAWRENCE
THOMPSON, ET AL DEFENDANTS
Execution For Sale of Mortgaged Premises
By virtue of the above stated writ of Execution, to me directed, I shall expose for sale by Public Auction, in the Sheriff's Office, Essex County Courts Building in Newark, on Tuesday, the 10th day of September next, at one-thirty P.M., (Prevaling Time).
Municipality: Township of Irvington, County of Essex
Street address: 138 Myrtle Avenue, Irvington, N.J.
Tax and Block: Lot 3, Block 108 on the Tax Map
Approximate dimensions: 25 feet x 100 feet
Nearest cross street: Fifteenth Avenue
A full legal description can be found in the office of the Register of Essex County.
The approximate amount of the Judgment to be satisfied by said sale is the sum of FORTY NINE THOUSAND ONE HUNDRED SEVENTY-SIX DOLLARS AND FORTY EIGHT CENTS (\$49,176.85), together with the costs of this sale.
The Sheriff reserves the right to adjourn the sale from time to time as provided by Law.
Newark, N.J. August 5, 1985
THOMAS J. D'ALESSIO, Sheriff
Alvin D. Miller, Attorney
The Bloomfield Life
Aug. 15, 22, 29, 1985
Fee: \$73.32
No. B085-36

SHERIFF'S SALE
SUPERIOR COURT OF NEW JERSEY,
CHANCERY DIVISION, ESSEX COUNTY, DOCKET NO. F-1982-85
UNION COUNTY SAVINGS BANK, a corporation, PLAINTIFF -vs- BRENDA
JOHNSON, single, et al, DEFENDANTS
Execution For Sale of Mortgaged Premises
By virtue of the above stated writ of Execution, to me directed, I shall expose for sale by Public Auction, in the Sheriff's Office, Essex County Courts Building in Newark, on Tuesday, the 10th day of September next, at one-thirty P.M., (Prevaling Time).
The property to be sold is located in the City of Newark, in the County of Essex, and State of New Jersey.
Commonly known as: 20 Melmore Gardens, East Orange, New Jersey
Tax Lot No. 120A in Block No. 531-A
Dimensions of Lot: (Approximately) 125 feet wide by 130 feet long.
Nearest Cross Street: Situate on the northwesterly side of Melmore Gardens, 183 feet from the southwesterly side of Lincoln Street.
A full legal description can be found in the office of the Register of Essex County.
The approximate amount of the Judgment to be satisfied by said sale is the sum of FIFTY FIVE THOUSAND SIX HUNDRED SEVENTY-TWO DOLLARS AND TWENTY-SIX CENTS (\$55,722.26), together with the costs of this sale.
The Sheriff reserves the right to adjourn the sale from time to time as provided by Law.
Newark, N.J. August 5, 1985
THOMAS J. D'ALESSIO, Sheriff
Zucker, Goldberg, Becker & Yekman, Attorneys
The Bloomfield Life
Aug. 15, 22, 29, 1985
Fee: \$82.72
No. B085-37

SHERIFF'S SALE
SUPERIOR COURT OF NEW JERSEY,
CHANCERY DIVISION, ESSEX COUNTY, DOCKET NO. F-1982-85
UNION COUNTY SAVINGS BANK, a corporation, PLAINTIFF -vs- BRENDA
JOHNSON, single, et al, DEFENDANTS
Execution For Sale of Mortgaged Premises
By virtue of the above stated writ of Execution, to me directed, I shall expose for sale by Public Auction, in the Sheriff's Office, Essex County Courts Building in Newark, on Tuesday, the 27th day of August next, at one-thirty P.M., (Prevaling Time). All the right, title and interest of the above named defendant Alfred Mariani, of and to all that tract or parcel of land and premises hereinafter Particularly described, situate, lying and being in the Borough of Roseland, in the County of Essex, and State of New Jersey.
KNOWN and designated as Lot 17 in block 429 on map entitled "Map of Centerville, Borough of Roseland, Essex County, N.J." filed in the Essex County Register's Office on February 23, 1967 as Map #2950.
BEING and intended to be part of the same land and premises conveyed to Summit Hill

SHERIFF'S SALE
SUPERIOR COURT OF NEW JERSEY,
CHANCERY DIVISION, ESSEX COUNTY, DOCKET NO. F-1982-85
UNION COUNTY SAVINGS BANK, a corporation, PLAINTIFF -vs- BRENDA
JOHNSON, single, et al, DEFENDANTS
Execution For Sale of Mortgaged Premises
By virtue of the above stated writ of Execution, to me directed, I shall expose for sale by Public Auction, in the Sheriff's Office, Essex County Courts Building in Newark, on Tuesday, the 10th day of September next, at one-thirty P.M., (Prevaling Time).
The property to be sold is located in the City of Newark, in the County of Essex, and State of New Jersey.
Commonly known as: 20 Melmore Gardens, East Orange, New Jersey
Tax Lot No. 120A in Block No. 531-A
Dimensions of Lot: (Approximately) 125 feet wide by 130 feet long.
Nearest Cross Street: Situate on the northwesterly side of Melmore Gardens, 183 feet from the southwesterly side of Lincoln Street.
A full legal description can be found in the office of the Register of Essex County.
The approximate amount of the Judgment to be satisfied by said sale is the sum of FIFTY FIVE THOUSAND SIX HUNDRED SEVENTY-TWO DOLLARS AND TWENTY-SIX CENTS (\$55,722.26), together with the costs of this sale.
The Sheriff reserves the right to adjourn the sale from time to time as provided by Law.
Newark, N.J. August 5, 1985
THOMAS J. D'ALESSIO, Sheriff
Zucker, Goldberg, Becker & Yekman, Attorneys
The Bloomfield Life
Aug. 15, 22, 29, 1985
Fee: \$82.72
No. B085-37

SHERIFF'S SALE
SUPERIOR COURT OF NEW JERSEY,
CHANCERY DIVISION, ESSEX COUNTY, DOCKET NO. F-1982-85
UNION COUNTY SAVINGS BANK, a corporation, PLAINTIFF -vs- BRENDA
JOHNSON, single, et al, DEFENDANTS
Execution For Sale of Mortgaged Premises
By virtue of the above stated writ of Execution, to me directed, I shall expose for sale by Public Auction, in the Sheriff's Office, Essex County Courts Building in Newark, on Tuesday, the 10th day of September next, at one-thirty P.M., (Prevaling Time).
The property to be sold is located in the City of Newark, in the County of Essex, and State of New Jersey.
Commonly known as: 20 Melmore Gardens, East Orange, New Jersey
Tax Lot No. 120A in Block No. 531-A
Dimensions of Lot: (Approximately) 125 feet wide by 130 feet long.
Nearest Cross Street: Situate on the northwesterly side of Melmore Gardens, 183 feet from the southwesterly side of Lincoln Street.
A full legal description can be found in the office of the Register of Essex County.
The approximate amount of the Judgment to be satisfied by said sale is the sum of FIFTY FIVE THOUSAND SIX HUNDRED SEVENTY-TWO DOLLARS AND TWENTY-SIX CENTS (\$55,722.26), together with the costs of this sale.
The Sheriff reserves the right to adjourn the sale from time to time as provided by Law.
Newark, N.J. August 5, 1985
THOMAS J. D'ALESSIO, Sheriff
Zucker, Goldberg, Becker & Yekman, Attorneys
The Bloomfield Life
Aug. 15, 22, 29, 1985
Fee: \$82.72
No. B085-37

FRESH

From ShopRite.

The MEATing® Place

Chicken Legs or Chicken Wings

lb. **.69** ANY SIZE PKG.

HOLLY FARMS, WHOLE WITH THIGHS

Chicken Breast **1.29** lb.

Breast Quarters **.89** lb.

Drumsticks or Thighs **.89** lb.

Pick of the Chix **.99** lb.

Boneless Chicken Breast **2.39** lb.

BUY JUMBO PAKS & SAVE MORE
3-LBS. OR MORE PER PKG.

HOLLY FARMS, WHOLE WIRIB CAGE (ANY SIZE PKG.)

Chicken Legs **.64** lb.

HOLLY FARMS, CHICKEN, WINGS (ANY SIZE PKG.)

Drumsticks or Thighs **.84** lb.

HOLLY FARMS, WHOLE WIRIB CAGE

Split Chicken Breast **1.29** lb.

The Fish Market

Fresh Fillet Of Hake **1.69** lb.

PACIFIC, STORE SLICED

Fresh Salmon Steak* **4.99** lb.

CLIPPER SHIP, STORE SLICED, PREVIOUSLY FROZEN

Swordfish Steak **4.99** lb.

FROZEN & THAWED, SURIMI BLEND WITH NATURAL CRAB FLAVOR

Supreme Sea Blend **3.49** lb.

The Frozen Food Place

REDUCED ACID (10-OZ.) REG. OR WIMORE PULP

Minute Maid Orange Juice **1.39** 12-oz. can

MORTON

Fried Chicken **2.99** 2-lb. pkg.

CELENTANO "LARGE ROUND"

Cheese Ravioli **1.19** 13-oz. pkg.

ALL FLAVORS, INCLUDING CUBIC SCOOPS

Sealtest Ice Cream **1.99** 1/2-gal. cart.

Deep Dynamite Discounts In Health & Beauty Aids

NEW PUMP! DENTAGARD

Aqua-fresh, Aim or Colgate Toothpaste **1.29** REG. T-94

YOUR CHOICE 4.5-oz. pump

ShopRite (BUY ONE, GET ONE FREE)

Vitamin C 500 Mg. **2.69** 2-100-ct. btl.

SEE STORE DISPLAY FOR OTHER BUY ONE, GET ONE FREE VITAMIN OFFERS

ASSORTED VARIETIES, CONDITIONERS OR

Suave Shampoo **1.29** REG. 16-oz. btl.

Scope Mouthwash **3.99** REG. 40-oz. btl.

Chlortrimeton Allergy **1.89** REG. 24-ct. pkg.

5 PLUS 1 FREE DISPOSABLE RAZORS

Good News Pivot **1.00** REG. 3-11-oz. pkg.

WHY PAY MORE?

Prell Shampoo **5.00** REG. 3-11-oz. btl.

ShopRite Coupon

WITH THIS COUPON ECR

ONE (1) 1-LB. 13-OZ. CAN OF LITE SLICED YELLOW

Del Monte Cling Peaches **.79**

Coupon good at any ShopRite Market. Limit one per family. Effective Sun. Aug. 11 thru Sat. Aug. 17, 1985.

SAVE .20

Beef Rib Steaks

U.S.D.A. CHOICE

ANY SIZE PKG., NOT LESS THAN 80% LEAN GROUND BEEF

2.99 lb.

CENTER CUT DECKLE OFF

GREAT ON THE GRILL! BEEF RIB

Club Steak **2.99** lb.

ANY SIZE PKG., NOT LESS THAN 80% LEAN GROUND BEEF

Lean Ground Beef **1.49** lb.

NOT LESS THAN 80% LEAN GROUND BEEF ShopRite FROZEN QUARTER POUNDER 100%

All American Beef Burgers **4.99** 3-lb. pkg.

GREAT FOR GRILLING!

Short Ribs of Beef **1.59** lb.

Boneless Beef **1.79** lb.

LOIN PORTION 9-11 CHOPS

Pork Chop Combo **1.59** lb.

MEATY RIB PORTION

Pork Loin for BBQ **1.69** lb.

KINGS PIRATE OVEN ROAST

Corned Beef Brisket **1.99** lb.

NO WATER ADDED BONELESS SMOKED LIGHT & LEAN OR

Hormel Cure #81 Ham **2.99** lb.

Back-To-School SAVINGS

FUNK & WAGNALLS

Family Library Of Great Music **49** ALBUMS

66 MUSICAL MASTERPIECES BY 19 GREAT COMPOSERS

ALBUM #1 only

3-Subject Notebook **.89** 120-ct. book

5-Subject Notebook **1.29** 200-ct. book

MARBLE

Composition Book **.99** each

MAJESTIC

Binder Royale **3.99** each

ShopRite

Wide Ruled Filler Paper **.89** 300 Sheets Loose Leaf Filler Paper

1-Subject Notebook **.79** 70-ct. books

ShopRite

Yellow Pencils **.99** 12-pack

ShopRite

Ball Point Pens **.89** 10-pack

WHY PAY MORE?

Typing Paper **1.19** 200-ct. pkg.

The Grocery Place

PRINCE ZITI, REG. OR THIN

Spaghetti or Elbow Macaroni **1.00** 1-lb. boxes

WHY PAY MORE?

Long Grain ShopRite Rice **1.99** 10-lb. bag

PRINCE SHELLS, TWISTS & CHEDDAR OR

Macaroni & Cheese **.99** 5-11-oz. boxes

MAKES 10-12S. CAFFEINE FREE W/OUTRA SWEET

Nestlea Iced Tea Mix **2.99** REG. 4-9-oz. jar

GROUND COFFEE

Chock Full O'Nuts **1.99** 1-lb. can

REGULAR OR NATURAL

Lincoln Apple Juice **.89** 1/2-gal. btl.

SOLID PACK, IN OIL OR WATER

Bumble Bee White Tuna **.99** 6 1/2-oz. can

CHUNK LIGHT, IN OIL OR WATER

Breast O'Chicken Tuna **.59** 6 1/2-oz. can

ShopRite Coupon

WITH THIS COUPON ECR

THREE (3) 1-LB. PKGS. OF #8 REG. OR #9 THIN SPAGHETTI OR #15 ELBOWS

Prince Pasta **.89**

Coupon good at any ShopRite Market. Limit one per family. Effective Sun. Aug. 11 thru Sat. Aug. 17, 1985.

SAVE .11

The Produce Place

FULL OF COUNTRY GOODNESS

Tender Yellow Sweet Corn **.99** 8 ears

EXTRA LARGE

Red Ripe Tomatoes **.59** lb.

CRISP 24 SIZE

Large Celery **.59** U.S. #1 CRISP

Fresh Carrots **.69** 2-lb. bag

FOR ALL YOUR COOKING NEEDS

Yellow Onions **1.29** 3-lb. bag

TANGY SCALLIONS (BCH) OR

Zesty Radishes **.99** 4-6-oz. bags

EASY ON THE WAISTLINE

Crisp Cucumbers **.99** 4 for

TENDER ROMAINE LETTUCE

Chicory or Escarole **.49** lb.

WALDEN FARMS LOCAL FRENCH 100% ISLAND BLUE CHEESE OR ITALIAN

Salad Dressing **1.39** 12-oz. btl.

Back-To-School SAVINGS

FUNK & WAGNALLS

Family Library Of Great Music **49** ALBUMS

66 MUSICAL MASTERPIECES BY 19 GREAT COMPOSERS

ALBUM #1 only

3-Subject Notebook **.89** 120-ct. book

5-Subject Notebook **1.29** 200-ct. book

MARBLE

Composition Book **.99** each

MAJESTIC

Binder Royale **3.99** each

ShopRite

Wide Ruled Filler Paper **.89** 300 Sheets Loose Leaf Filler Paper

1-Subject Notebook **.79** 70-ct. books

ShopRite

Yellow Pencils **.99** 12-pack

ShopRite

Ball Point Pens **.89** 10-pack

WHY PAY MORE?

Typing Paper **1.19** 200-ct. pkg.

Look For Our New Color Circular

If you have not received one in the mail or in your local newspaper, pick one up at your nearby ShopRite while supplies last.

RED RIPE

Watermelon **.12** lb.

WHOLE & CUTS

THE NATURAL SNACK, THOMPSON

Seedless Grapes **.79** lb.

LARGE 5 SIZE

Honeydew Melons **1.39** each

JUAN CANARY PERSIAN, CRENSHAW OR

Casaba Melons **.49** lb.

SUNKIST

Valencia Oranges **1.69** 4-lb. bag

JUICY SWEET

Pineapples **1.69** each

12 SIZE

Tropical Mangos **.79** each

FOR YOUR SUMMER COOLER

Fresh Limes **10 for .99**

FRESH

Driscoll Strawberries **1.49** pt.

The Appy Place

STORE SLICED

Chicken Breast **1.99** lb.

ShopRite STORE SLICED

American Cheese **1.99** lb.

GERMAN OR EGG AND

Potato Salad **.69** lb.

BULK

Hormel Pepperoni **2.99** lb.

The Dairy Place

REGULAR QUARTERS

ShopRite Margarine **.99** 1-lb. pkgs.

ALL VARIETIES, ShopRite

Cottage Cheese **.79** 1-lb. pkg.

ALL VARIETIES

La Yogurt **1.00** 3 6-oz. conts.

MINUTE MAID REG. OR COUNTRY STYLE

Orange Juice **1.49** 1/2-gal. cart.

The Family Pharmacy Dept.

CALL US AT 235-0821

OPEN 7 DAYS:

Monday-Thursday 8am-9pm;

Friday 8am-10pm;

Saturday 8am-6pm;

Sunday 9am-2pm

Our pharmacists will gladly arrange transfer of an existing prescription from your present pharmacy to us.

(Nitroglycerin Transdermal) * Transderm @ 30 Nitro-5	(Nitroglycerin Transdermal) * Nitrodur @ 2 15cm or 20cm 2
\$29.99	\$29.99
(Nitroglycerin Transdermal) * Transderm @ 30 Nitro-10	(Diltiazem HCL) * Cardizem @ 100 60 mg Tablets
\$33.99	\$34.99
(Nitroglycerin Transdermal) * NitroBid @ 6.5 mg. Capsules	(Nitroglycerin Transdermal) * Nitrodisc 5 mg.
\$20.99	\$28.99
	(Nitroglycerin Transdermal) * Nitrodisc 10 mg
	\$31.99

* Requires Prescription Expires August 24, 1985

* Quantities less than those listed may be slightly higher.

ShopRite: STILL THE LOW PRICE LEADER

For Location of your Nearest ShopRite Call These Toll Free Numbers: From 8am - 6pm Monday thru Friday

NEW JERSEY: 800-492-4173 Conn., Del., New York, Penn., Mass.: 800-526-6912

In order to assure a sufficient supply of sales items for all our customers, we must reserve the right to limit the purchase to units of 4 of any sales items, except where otherwise noted. Not responsible for typographical errors. Prices effective Sun. Aug. 11 thru Sat. Aug. 17, 1985. None sold to other retailers or wholesalers. Artwork does not necessarily represent item on sale, it is for display purposes only. Copyright WAKEFERN FOOD CORPORATION 1985.